



Government of **Western Australia**  
Department of **Health**

# Elective Surgery Wait List Report Western Australia Public Hospitals

June 2016



[health.wa.gov.au](http://health.wa.gov.au)

Date Issued: 21 July 2016

© Department of Health, Western Australia

This work is copyright. Apart from any use as permitted under the *Copyright Act 1968*, no part may be reproduced without prior written permission from the Department of Health, Western Australia.

Requests and enquiries concerning reproduction and rights should be directed to –

Performance Reporting Branch  
Purchasing and System Performance Division  
Department of Health, Western Australia  
PO Box 8172 Perth Business Centre  
Western Australia 6849

The Department's publications on elective surgery are available online at:

<http://ww2.health.wa.gov.au/Reports-and-publications/Elective-Surgery-Wait-List-ESWL-reports>

ISSN 1836-1617 (online)

ISSN 1836-1609 (print)

**Suggested Citation:**

Elective Surgery Wait List Report, Western Australian Public Hospitals, June 2016  
Department of Health, Western Australia, 2016.

# Contents

<b>Contents .....</b>	<b>iii</b>
<b>List of Tables .....</b>	<b>iv</b>
<b>List of Figures .....</b>	<b>v</b>
<b>Abbreviations.....</b>	<b>vi</b>
<b>Notes .....</b>	<b>vii</b>
<b>Glossary.....</b>	<b>xi</b>
<b>1. Executive summary .....</b>	<b>1</b>
<b>2. Cases on wait list .....</b>	<b>2</b>
2.1 Number of cases.....	2
2.2 Waiting times.....	6
2.3 WA Elective Services Target.....	7
<b>3. Admissions from wait list.....</b>	<b>9</b>
3.1 Number of cases.....	9
3.2 Waiting times.....	12
3.3 Indicator procedures .....	13
<b>4. Ambulatory Surgery Initiative.....</b>	<b>13</b>
<b>5. Wait list activity.....</b>	<b>15</b>
<b>Appendix A: Monthly tables .....</b>	<b>17</b>
<b>Appendix B: Quarterly indicator procedure tables .....</b>	<b>38</b>

# List of Tables

Table 1: Public hospital ESWL cases waiting and waiting times at 30 June 2015, 31 May 2016 and 30 June 2016 .....	2
Table 2: WA State summary, cases waiting at end of quarter by urgency category, June 2016 quarter .....	6
Table 3: Public hospital ESWL admission and waiting times for June 2015, May 2016 and June 2016.....	10
Table 4: WA State summary, admissions during quarter by urgency category, June 2016 quarter .....	13
Table 5: ASI cases undertaken by public hospital and region, June 2016.....	14
Table 6: Annual summary of admissions from public hospital ESWLs and completed ASI cases, 2006/2007 - 2015/2016 .....	14

# List of Figures

Figure 1: Public hospital ESWL cases waiting, June 2014 - June 2016 .....	3
Figure 2: Public hospital ESWL cases waiting, within boundary and proportion (%) of within boundary cases, June 2014 - June 2016.....	4
Figure 3: Public hospital ESWL cases waiting, median and 90th percentile waiting time (months), June 2014 - June 2016 .....	4
Figure 4: Metropolitan ESWL cases waiting, median and 90th percentile waiting time (months), June 2014 - June 2016 .....	5
Figure 5: WACHS ESWL cases waiting, median and 90th percentile waiting time (months), June 2014 - June 2016.....	5
Figure 6: Public hospital ESWL cases waiting and median waiting time (months) at end of six monthly periods, July 1999 - June 2016.....	7
Figure 7: Public hospital ESWL Category 1 WEST performance: proportion of Category 1 cases on wait list for longer than clinically recommended time, June 2014 - June 2016 .....	8
Figure 8: Public hospital ESWL Category 2 WEST performance: proportion of Category 2 cases on wait list for longer than clinically recommended time, June 2014 - June 2016 .....	8
Figure 9: Public hospital ESWL Category 3 WEST performance: proportion of Category 3 cases on wait list for longer than clinically recommended time, June 2014 - June 2016 .....	9
Figure 10: Public hospital ESWL admissions, June 2014 - June 2016 .....	10
Figure 11: Public hospital ESWL admissions, median and 90th percentile waiting time (months) to admission, June 2014 - June 2016.....	11
Figure 12: Metropolitan ESWL admissions, median and 90th percentile waiting time (months) to admission, June 2014 - June 2016.....	11
Figure 13: WACHS ESWL admissions, median and 90th percentile waiting time (months) to admission, June 2014 - June 2016.....	12
Figure 14: Public hospital ESWL summary of activity, June 2014 - June 2016 .....	15
Figure 15: Metropolitan ESWL summary of activity, June 2014 - June 2016.....	16
Figure 16: WACHS ESWL summary of activity, June 2014 - June 2016 .....	16

# Abbreviations

AIHW	Australian Institute of Health and Welfare
ASI	Ambulatory Surgery Initiative
CAHS	Child and Adolescent Health Service
COAG	Council of Australian Governments
DNA	did not attend
ESWL	Elective surgery wait list
HCARe	Health Care and Related Information System
FSH	Fiona Stanley Hospital
JHC	Joondalup Health Campus
Metro	Metropolitan area, consisting of CAHS, NMHS and SMHS
NA	not available
NMHS	North Metropolitan Health Service (i.e. includes Joondalup Health Campus, Kalamunda Hospital, King Edward Memorial Hospital, Osborne Park Hospital, St John of God Midland Public Hospital, Sir Charles Gairdner Hospital and Swan District Hospital)
PHC	Peel Health Campus
qtr	quarter
RFC	ready for care
SMHS	South Metropolitan Health Service (i.e. includes Armadale-Kelmscott Memorial Hospital, Bentley Hospital, Fiona Stanley Hospital, Fremantle Hospital, Kaleeya Hospital, Peel Health Campus, Rockingham General Hospital and Royal Perth Hospital)
TOPAS	The Open Patient Administration System
YTD	Year to date (calendar year)
WA	Western Australia
WACHS	Western Australian Country Health Service (i.e. includes Goldfields, Great Southern, Kimberley Health Regions, Midwest, Pilbara, South West, and Wheatbelt)
webPAS	Web-based Patient Administration System
WEST	Western Australia Elective Services Target
WLDC	Wait List Data Collection

# Notes

## Data extraction date

All data in this report is as at the end of the last day of each reported month.

## Data revision

The most recent edition of reports should be consulted in case previously published data have been revised. Revisions can be due to updates to procedure codes, lags in data processing or other types of errors detected after publication.

**Historical data for the period 2014-15 and 2015-16 have been updated in this June 2016 report.**

## Data source

Wait list extract data in ESWL reports are from the HCARE (Health Care and Related Information System), TOPAS (The Open Patient Administration System), webPAS (Web-based Patient Administration System) and Joondalup and Peel data systems. Data in this report are sourced from the Wait List Data Collection (WLDC).

## Data coverage

Royal Perth Rehabilitation Hospital was closed in early October 2014.

From October 2014 Fiona Stanley Hospital data have been included in the report.

Kaleeya Hospital was closed in early December 2014.

Swan District Hospital was closed on 24 November 2015.

From 24 November 2015 St John of God Midland Public Hospital data have been included in the report.

## Data definitions

Data in ESWL reports are based on Australian Institute of Health and Welfare (AIHW) reporting guidelines.

## Effects of rounding

Where figures have been rounded, discrepancies may occur between sums of the component items and totals. Published percentages are calculated prior to rounding of the figures and therefore some discrepancy may exist between these percentages and those that could be calculated from the rounded figures.

## Metropolitan public hospitals

The term 'metropolitan public hospital' refers to the following public hospitals – Armadale-Kelmscott Memorial Hospital, Bentley Hospital, Fiona Stanley Hospital, Fremantle Hospital, Joondalup Health Campus, Kalamunda Hospital, Kaleeya Hospital, King Edward Memorial Hospital, Osborne Park Hospital, Peel Health Campus, Princess Margaret Hospital, Rockingham General Hospital, Royal Perth Hospital, St John of God Midland Public Hospital, Sir Charles Gairdner Hospital and Swan District Hospital.

## Specialty

Specialty is *"The area of clinical expertise held by the doctor who will perform the elective surgery"*. (Source: Australian Hospital Statistics, AIHW 2012-13.)



## Notes (continued)

### Indicator procedure

*“An indicator procedure is a procedure which is of high volume and is often associated with long waiting periods. Elective surgery waiting time statistics for indicator procedures give a specific indication of waiting time for these particular areas of elective care provision.”*

(Source: Australian Hospital Statistics, AIHW 2012-13.)

### WA Elective surgery targets (WEST)

On 1st April 2016, WA Health introduced a new statewide performance target for the provision of elective services. The WA Elective Services Target (WEST) aims to ensure timely and equitable access to public elective services. It replaces the National Elective Surgery Target (NEST), following the expiry of the National Partnership Agreement on Improving Public Hospital Services in 2015.

WEST requires that no patients on elective waiting lists wait longer than the clinically recommended time for their procedure, according to their urgency category. For non-reportable wait listed procedures, the target is incremental, with the aim of achieving 0% over boundary cases on waiting list by 2018. The WEST targets are outlined in the table below.

Proportion of cases on wait list waiting longer than clinically recommended time (all urgency categories):

	2016 target	2017 target	2018 target
<b>Reportable procedures</b>	0%	0%	0%
<b>Non-reportable procedures</b>	15%	8%	0%

Data for On List cases are preliminary as they are snapshots as at the end of each month.

### Reportable procedures

All waiting list cases that are not listed on the Department of Health (DOH) excluded procedures list and therefore have a mandatory reporting requirement to the Commonwealth.

### Non-reportable procedures

All waiting list cases listed on the DOH excluded procedures list and therefore do not have a mandatory reporting requirement to the Commonwealth.

The DOH excluded procedures list is consistent with the Australian Institute of Health and Welfare (AIHW) excluded procedures list and includes additional procedure codes which are intended to better reflect the procedures identified in the AIHW procedures list.

### Within boundary cases

A patient who has been waiting less than the recommended period in one of the three clinical urgency categories is defined as being within boundary. The clinical urgency categories prioritise patients from least urgent (Category 3) to most urgent (Category 1).

### Over boundary cases

A patient who has been waiting more than the recommended period in one of the three clinical urgency categories is defined as being over boundary.



## Notes (continued)

### Category 1

Procedures that are clinically indicated within 30 days.

### Category 2

Procedures that are clinically indicated within 90 days.

### Category 3

Procedure that are clinically indicated within 365 days.

### Admissions to hospital from the elective surgery wait lists

Cases admitted from the waiting lists are patients admitted from the waiting lists to hospital to have their elective surgery. They are called cases (rather than patients) because someone may have been admitted for elective surgery on more than one occasion.

For example, if a patient was admitted twice during the reporting period, then they will be counted as two cases.

- Admissions include all cases admitted regardless of client listing status.
- Admitted coded cases are excluded where the wait listed procedure is on the AIHW 'Excluded procedures' list.
- Admitted uncoded cases (i.e. the wait list procedure is not coded) are included if the wait list type equals 'Surgical' and the wait list category equals 'Elective'.

### Removals from the elective surgery wait lists for reasons other than admission

Wait list 'Removals' are removals from a list for reasons other than admission to hospital for elective surgery, including that a patient on an elective surgery wait list was admitted as an emergency admission for their surgery, that the procedure was no longer required (e.g. patient had their procedure in a private hospital), the patient was non-contactable (e.g. as part of audit procedures to check whether the patient still required their surgery), or that the database entry was incorrect (e.g. a duplicate case).

Wait list removals include all cases removed regardless of client listing status, but exclude removals where the reason for removal = 'Transfer to another hospital'.

### Number on wait list at end of period

Cases on the ESWLs represent the number of patients waiting. They are called cases (rather than patients) because someone may be on a waiting list more than once.

For example, if a patient is on a waiting list twice for two different procedures, then they will be counted as two cases.

- On List cases must have a client listing status equal to ready for care (RFC).
- On List RFC coded cases are excluded when the wait list procedures are on the AIHW 'Excluded procedures' list.
- On List cases are included if the wait list type equals 'Surgical' and the wait list category equals 'Elective'.

## Notes (continued)

### Wait list activity

The following notes specifically relate to the summary of monthly wait list activity reported in Tables A-16 to A-18.

### On wait list variations

This refers to fluctuations in the number of cases on a wait list that cannot be attributed to additions, admissions or removals. These include:

- reversals of previously removed cases, which means that a case reappears on the list without it being recorded as an 'addition' to the list during that time period
- deferred cases becoming RFC (appearing on the list without being recorded as an 'addition')
- staged cases becoming RFC (appearing on the list without being recorded as an addition)
- RFC cases becoming deferred (i.e. disappearing from the 'Reportable on-list' cases, but not being recorded as a removal)
- cases appearing on or disappearing from the list if the procedure code is changed (e.g. due to the wrong procedure being recorded in the first place) from a reportable to a non-reportable procedure or vice versa (uncoded cases are a prime example of this)
- cases that have been added to the wait list, with the wait list date backdated (e.g. due to coding/data entry delays), so that the case does not get recorded as an addition.

### Confidentiality

Table cells are marked with (\*) to indicate when data have been suppressed to protect patient and clinician confidentiality where either:

- the indicator procedure or specialty in a hospital has only one surgeon and the number of cases in that indicator procedure or specialty is less than 10; or
  - the total number of cases in a hospital for that indicator procedure or specialty is less than five;
- and
- any data cells with fewer than 5 cases within individual indicator procedures and urgency categories; and
  - to include all suppressed number of cases in the "Uncoded/other" procedure category to maintain the actual total number.

Note: For Tables B-1 to B-16, the data suppression will not impact on the calculation of the median waiting time and percentage of cases within boundary. Therefore, a calculation of the percentage of cases within boundary using the suppressed data may not agree with the results for listed procedures.

# Glossary

**Mean:** This refers to the arithmetic mean, being the sum of all values in the list divided by the number of items in the list. The mean is the most commonly used type of average and can also be referred to simply as the average.

**Median:** This refers to the value separating the higher half of a sample, a population, or a probability distribution, from the lower half. This statistic is used, in preference to the mean, when the distribution of the values is skewed by a small number of very high values.

**90th percentile:** This refers to the value in the list below which there are 90 percent of numbers and enables waiting times to be expressed as a percentile rank. However, as percentile ranks are not on equal interval scales, the difference between any two scores is not the same as between any other two scores.

For instance, the difference (25) between 90 and 65 is not the same as the difference (25) between 50 and 25 because the position rank of a percentile is based on an assumed normal distribution of all values.

# 1. Executive summary

The purpose of this report is to provide information on elective surgery wait lists for Western Australian public hospitals. The report shows current activity and trends pertaining to the elective surgery wait lists, including performance against WEST targets.

WA Health is committed to ensuring that information relating to hospitals' performance is easily accessible. Therefore, information contained within this report is being transitioned onto the Our Hospitals website (address below). Once this transition is complete, this report will be ceased.

<http://www.health.wa.gov.au/OurHospitalsandHealthServices/home/>

Note that during this transition, WEST performance will be published for reportable procedures only, as per previous NEST reporting.

## Current activity: June 2016

At the end of June 2016 there was a total of 19,874 cases on elective surgery wait lists (ESWLs) at all public hospitals, of which 1,176 were Category 1, 4,939 were Category 2 and 13,759 were Category 3. There were 204 (17.3%), 767 (15.5%) and 264 (1.9%) of Category 1, 2 and 3 cases respectively on waitlist for longer than the clinically recommended time.

The median waiting time for all patients on all ESWLs was 2.10 months, with a median waiting time of 2.27 months for the metropolitan ESWLs and 1.81 months for the WACHS ESWLs.

In June 2016 there was a total of 7,142 admissions from ESWLs at all public hospitals, of which 6,720 (94.1%) were within boundary. Of the 7,142 admissions, 5,729 (80.2%) were from the metropolitan ESWLs and 1,413 (19.8%) were from the WACHS ESWLs.

The median waiting time for all admissions from ESWLs was 0.95 months. The figure for the metropolitan ESWLs was 0.95 months while the WACHS ESWLs was 0.92 months.

## Trends in waiting times for all ESWLs: June 2014, June 2015 and June 2016

The median waiting time for all cases on ESWLs at all public hospitals in the current month was 2.10 months, compared with a median waiting time of 2.04 months one year ago and 1.81 months two years ago.

The median waiting time for over boundary cases on ESWLs at all public hospitals in the current month was 4.93 months, compared with a median waiting time of 5.93 months one year ago and 4.27 months two years ago.

The median waiting time for within boundary cases on ESWLs at all public hospitals in the current month was 1.94 months, compared with a median waiting time of 1.84 months one year ago and 1.78 months two years ago.

## Trends in waiting times for metropolitan and WACHS ESWLs: June 2014 to June 2016

The median waiting time of cases waiting increased from 1.81 to 2.27 months for the metropolitan ESWLs and increased from 1.78 to 1.81 months for the WACHS ESWLs.

The 90th percentile waiting time of cases waiting increased from 7.30 to 8.15 months for the metropolitan ESWLs and decreased from 8.19 to 7.66 months for the WACHS ESWLs.

The median waiting time of ESWLs admissions increased from 0.92 to 0.95 months for the metropolitan ESWLs and decreased from 1.05 to 0.92 months for the WACHS ESWLs.

The 90th percentile waiting time of ESWLs admissions increased from 4.64 to 5.33 months for the metropolitan ESWLs and increased from 4.21 to 4.50 months for the WACHS ESWLs.

## 2. Cases on wait list

### 2.1 Number of cases

Table 1 (page 2) provides comparative data on the number of cases on all, metropolitan and WACHS public hospital ESWLs for the current reporting month, the previous month and the same month last year.

This table shows that at 30 June 2016, of the 19,874 cases on all ESWLs, 16,065 (80.8%) were on the metropolitan ESWLs and 3,809 (19.2%) were on the WACHS ESWLs.

The total of 19,874 cases on all ESWLs was an increase of 996 from the previous month (18,878) and an increase of 1,593 over the same month last year (18,281). See Table A-1 (page 18) for monthly data from January 2014 for all ESWLs.

Table 1: **Public hospital ESWL cases waiting and waiting times at 30 June 2015, 31 May 2016 and 30 June 2016**

	Cases	Waiting time (months)	
	n	Median	90th percentile
<b>Metropolitan ESWLs</b>			
June 2015	14,518	2.07	8.25
May 2016	15,288	2.30	8.12
June 2016	16,065	2.27	8.15
<b>WACHS ESWLs</b>			
June 2015	3,763	1.84	8.19
May 2016	3,590	1.81	7.78
June 2016	3,809	1.81	7.66
<b>All ESWLs</b>			
June 2015	18,281	2.04	8.25
May 2016	18,878	2.24	8.02
June 2016	19,874	2.10	8.12

The total of 16,065 cases on the metropolitan ESWLs was an increase of 777 from the previous month (15,288) and an increase of 1,547 over the same month last year (14,518). See Table A-3 (page 20) for monthly data from January 2014 for the metropolitan ESWLs.

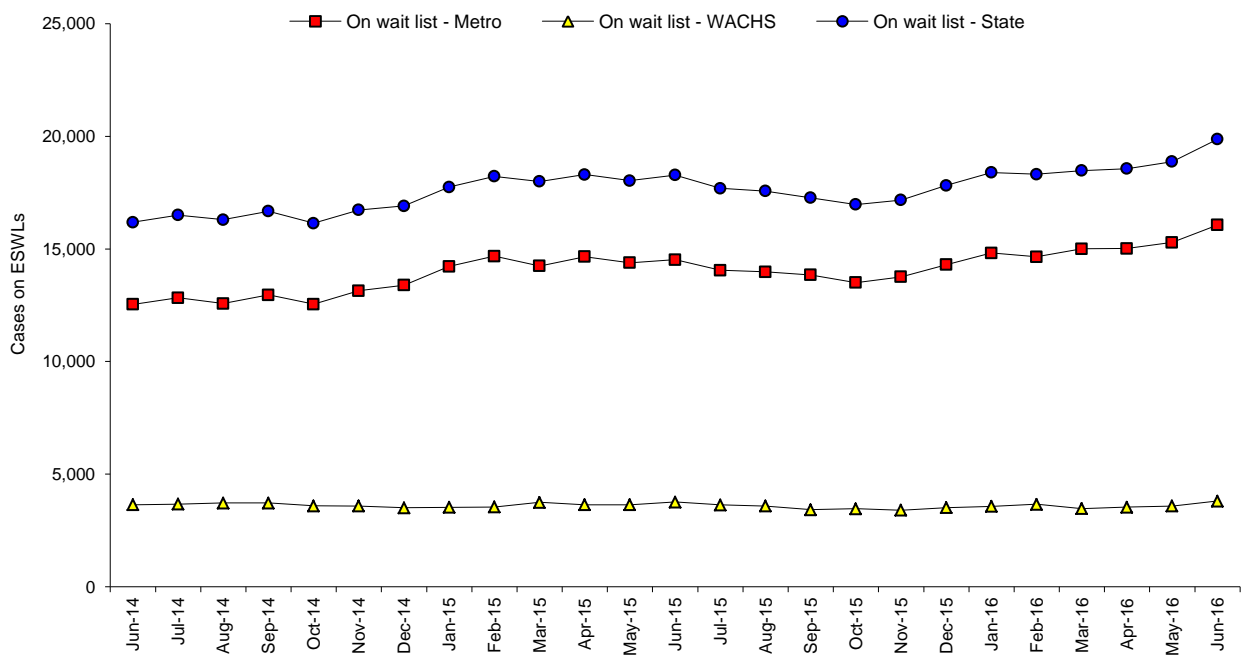
The total of 3,809 cases on the WACHS ESWLs was an increase of 219 from the previous month (3,590) and an increase of 46 over the same month last year (3,763). See Table A-5 (page 22) for monthly data from January 2014 for the WACHS ESWLs.

Figure 1 (page 3) shows cases waiting on all, the metropolitan and the WACHS ESWLs over the past two years.

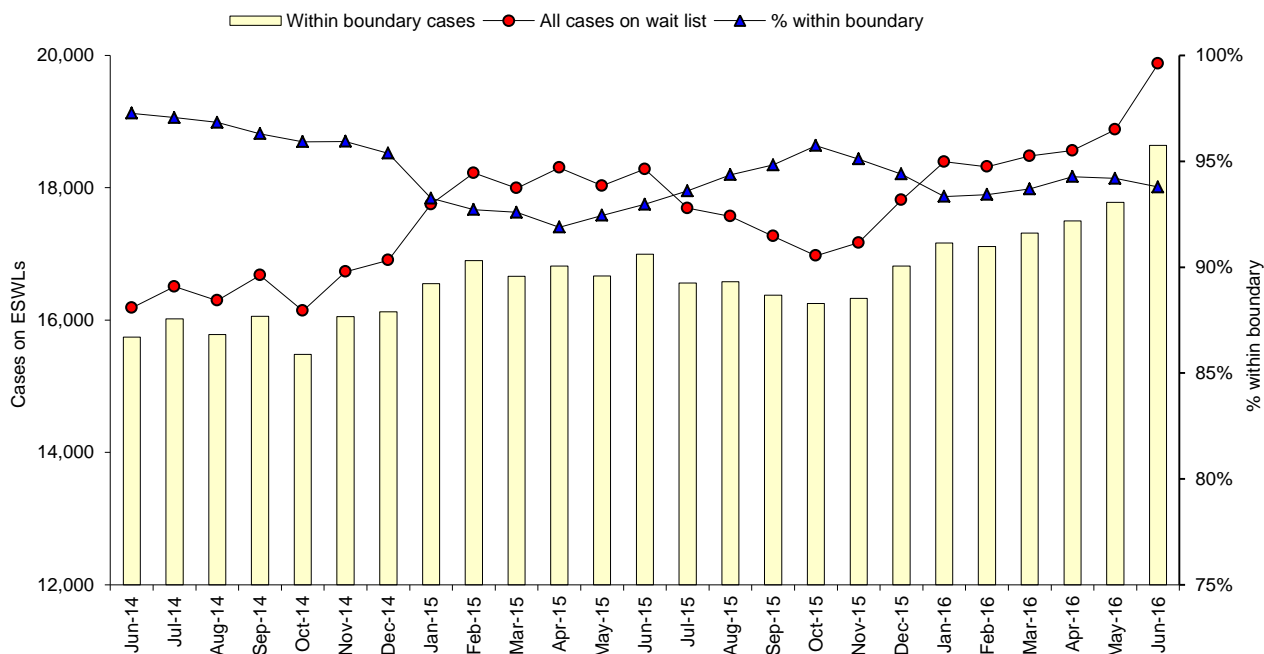
Figure 2 (page 4) shows all and within boundary cases, and the proportion (%) of within boundary cases on all ESWLs over the past two years.

Figure 3 (page 4) and Figures 4 and 5 (page 5) show cases waiting and linear regression trendlines for all, the metropolitan and the WACHS ESWLs over the past two years.

**Figure 1: Public hospital ESWL cases waiting, June 2014 - June 2016**



**Figure 2: Public hospital ESWL cases waiting, within boundary and proportion (%) of within boundary cases, June 2014 - June 2016**



**Figure 3: Public hospital ESWL cases waiting, median and 90th percentile waiting time (months), June 2014 - June 2016**

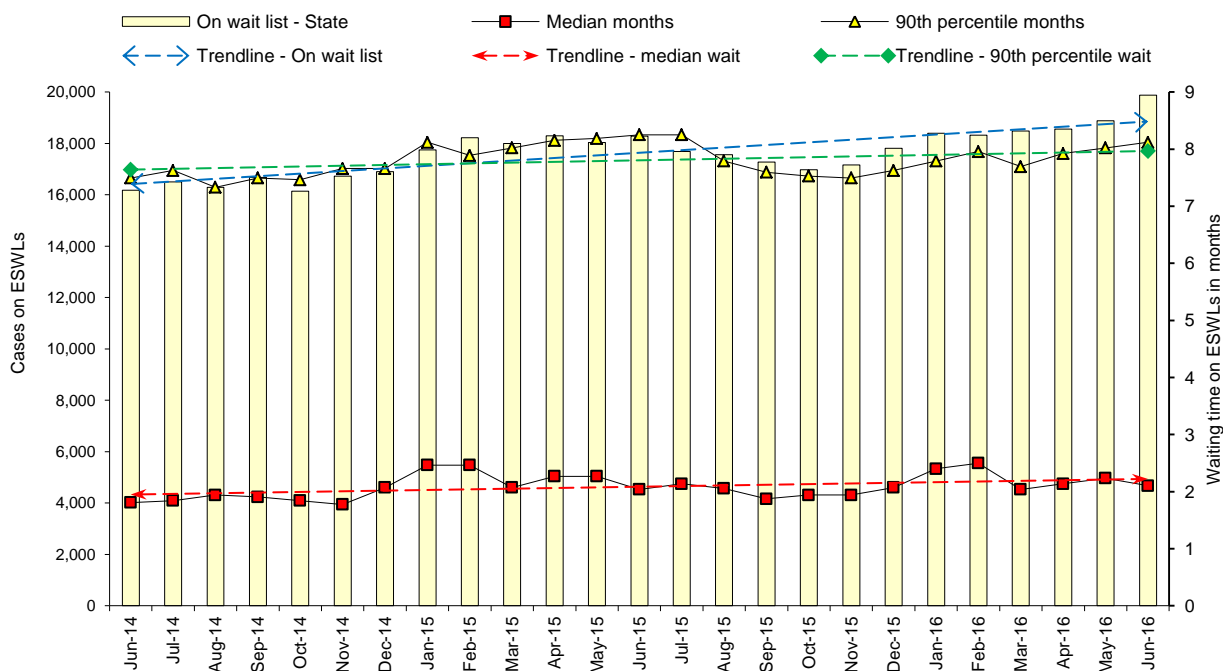




Figure 4: **Metropolitan ESWL cases waiting, median and 90th percentile waiting time (months), June 2014 - June 2016**

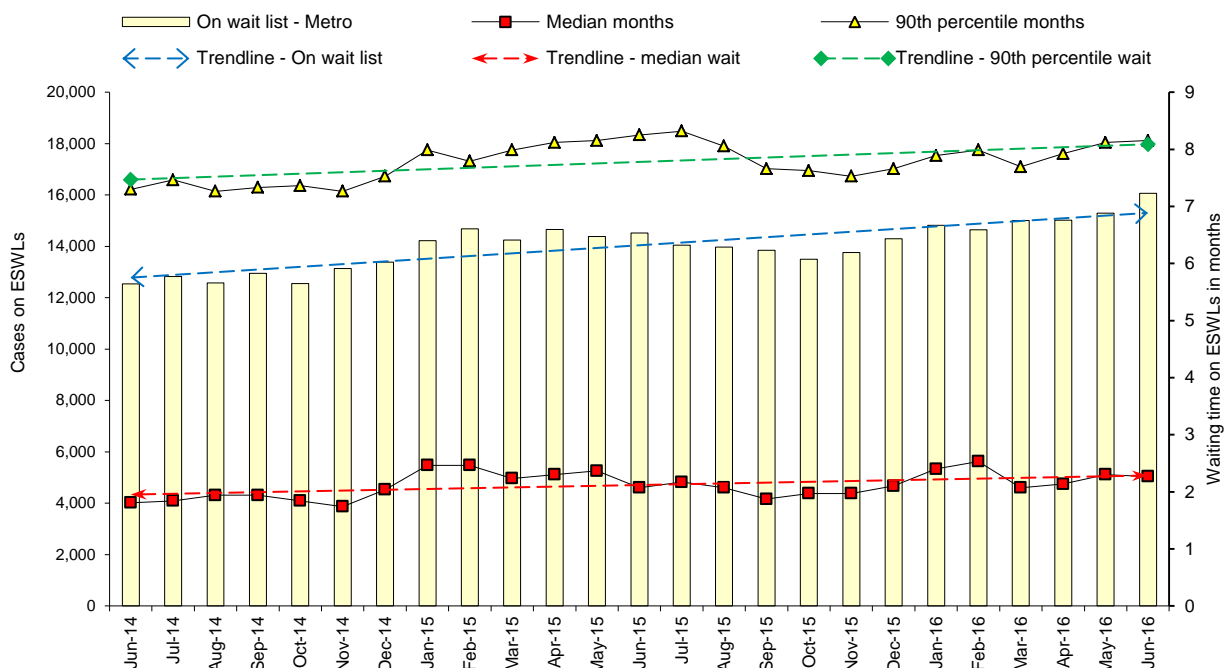
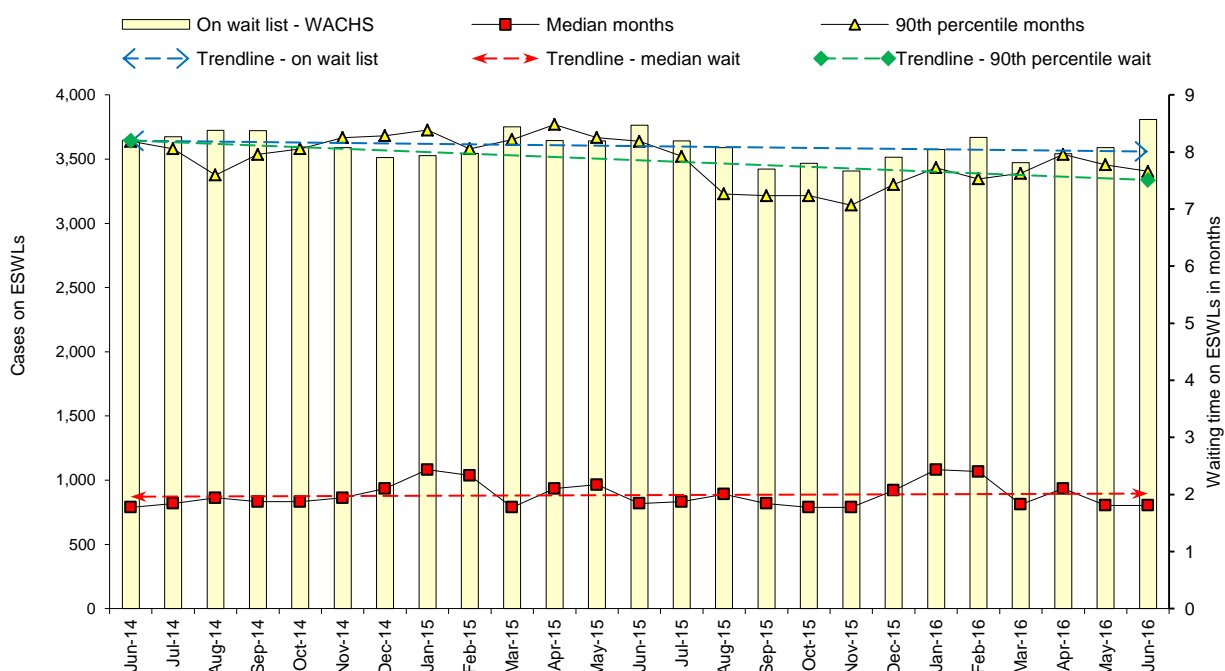


Figure 5: **WACHS ESWL cases waiting, median and 90th percentile waiting time (months), June 2014 - June 2016**



## 2.2 Waiting times

Table 1 (page 2) shows the median and 90th percentile waiting times on all, the metropolitan and the WACHS ESWLs for the current reporting month, the previous month and the same month last year.

This table shows that the median waiting time for all patients on all ESWLs was 2.10 months, with a median waiting time of 2.27 months for the metropolitan ESWLs and 1.81 months for the WACHS ESWLs.

Figure 3 (page 4) and Figures 4 and 5 (page 5) show median and 90th percentile waiting times and linear trendlines for all, the metropolitan and the WACHS ESWLs over the past two years.

As at 30 June 2016, of the 19,874 cases on all ESWLs, 291 (1.5%) had been waiting for more than 365 days, 217 (1.1%) had been waiting between 366 and 500 days, and 74 (0.4%) had been waiting for more than 500 days (Table A-7, page 24).

This means that at the end of the current reporting month, 98.5% of cases on all ESWLs had been waiting for 365 days or less.

See Tables A-8 and A-9 (pages 25 and 26) for data from January 2014 for cases by duration for metropolitan and WACHS ESWLs respectively.

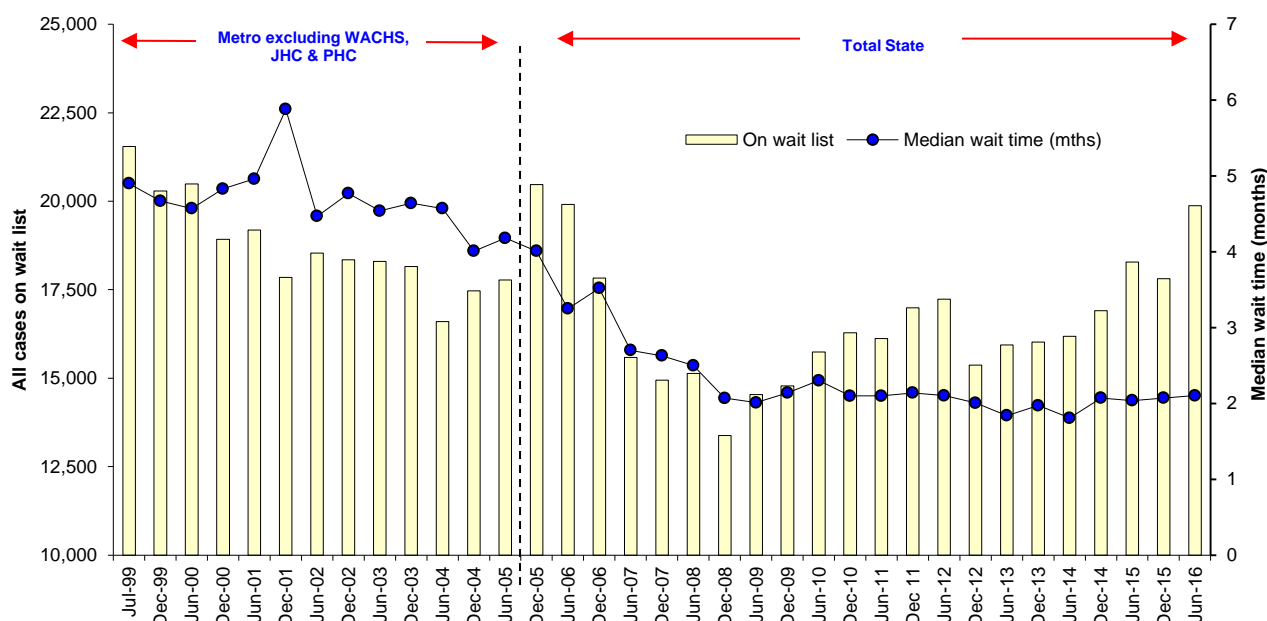
Table 2 (page 6) shows that the median waiting time on all ESWLs for the quarter was 64 days, ranging from 10 days for Category 1 cases to 94 days for Category 3 cases.

Table 2: **WA State summary, cases waiting at end of quarter by urgency category, June 2016 quarter**

Category	Cases on wait list at end of quarter			
	Within boundary		Total	
	n	%	n	Median wait time (days)
Category 1	972	82.7%	1,176	10
Category 2	4,172	84.5%	4,939	34
Category 3	13,495	98.1%	13,759	94
<b>Total</b>	<b>18,639</b>	<b>93.8%</b>	<b>19,874</b>	<b>64</b>

Figure 6 (page 7) shows six monthly ESWL cases waiting and median waiting time, from the end of July 1999 to the end of June 2016.

Figure 6: **Public hospital ESWL cases waiting and median waiting time (months) at end of six monthly periods, July 1999 - June 2016**



## 2.3 WA Elective Services Target

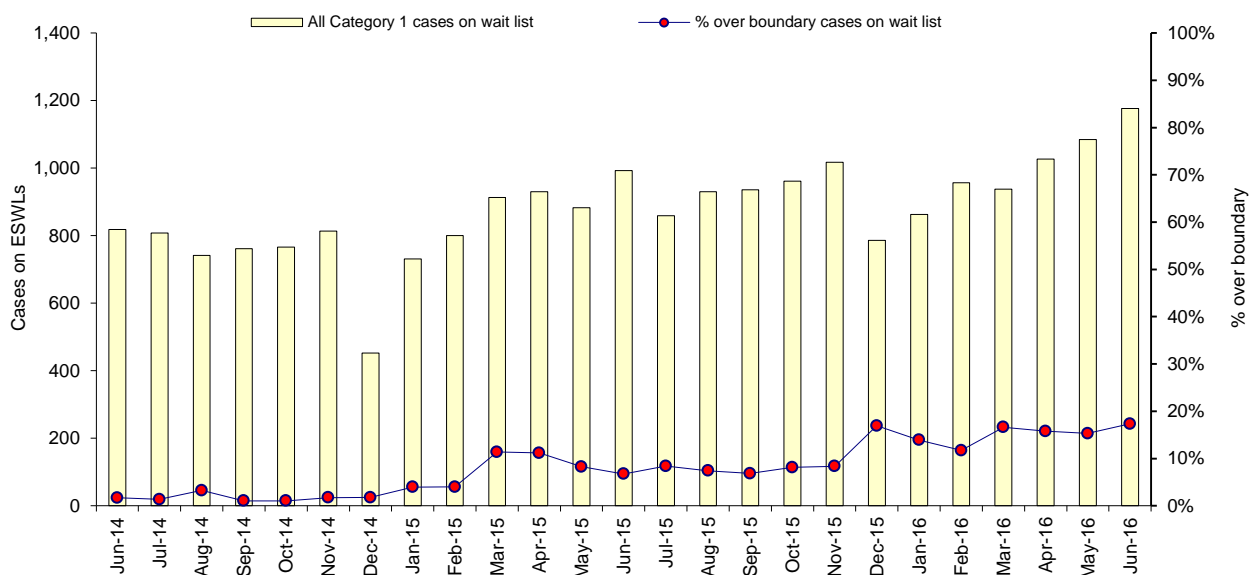
Table A-20 (page 37), Figures 7 to 9 (page 8 to 9) show the WA Elective Services Target (WEST) performance of proportion of cases on the wait list for longer than the clinically recommended time by category.

### 2.3a Category 1 cases

Table A-10 (page 27) provides a breakdown of Category 1 cases by within and over boundary status for all, metropolitan and WACHS ESWLs from January 2014 up to the current reporting month.

Figure 7 (page 8) shows Category 1 cases waiting and the proportion (%) of those that were over boundary over the past two years.

**Figure 7: Public hospital ESWL Category 1 WEST performance: proportion of Category 1 cases on wait list for longer than clinically recommended time, June 2014 - June 2016**

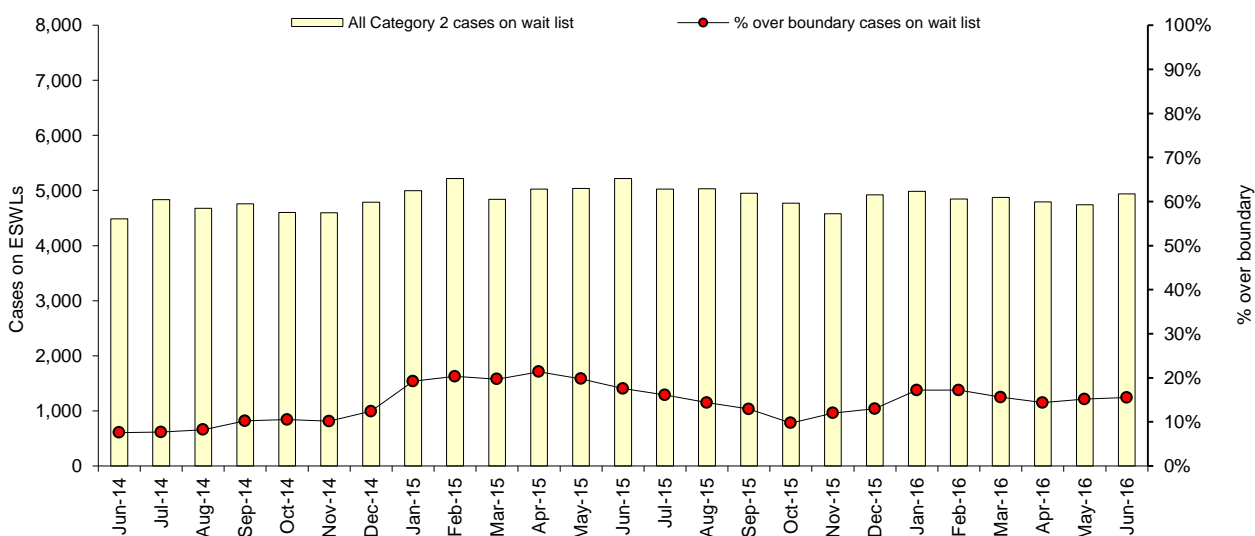


### 2.3b Category 2 cases

Table A-11 (page 28) provides a breakdown of Category 2 cases by within and over boundary status for all, metropolitan and WACHS ESWLs from January 2014 up to the current reporting month.

Figure 8 (page 8) shows Category 2 cases waiting and the proportion (%) of those that were over boundary over the past two years.

**Figure 8: Public hospital ESWL Category 2 WEST performance: proportion of Category 2 cases on wait list for longer than clinically recommended time, June 2014 - June 2016**

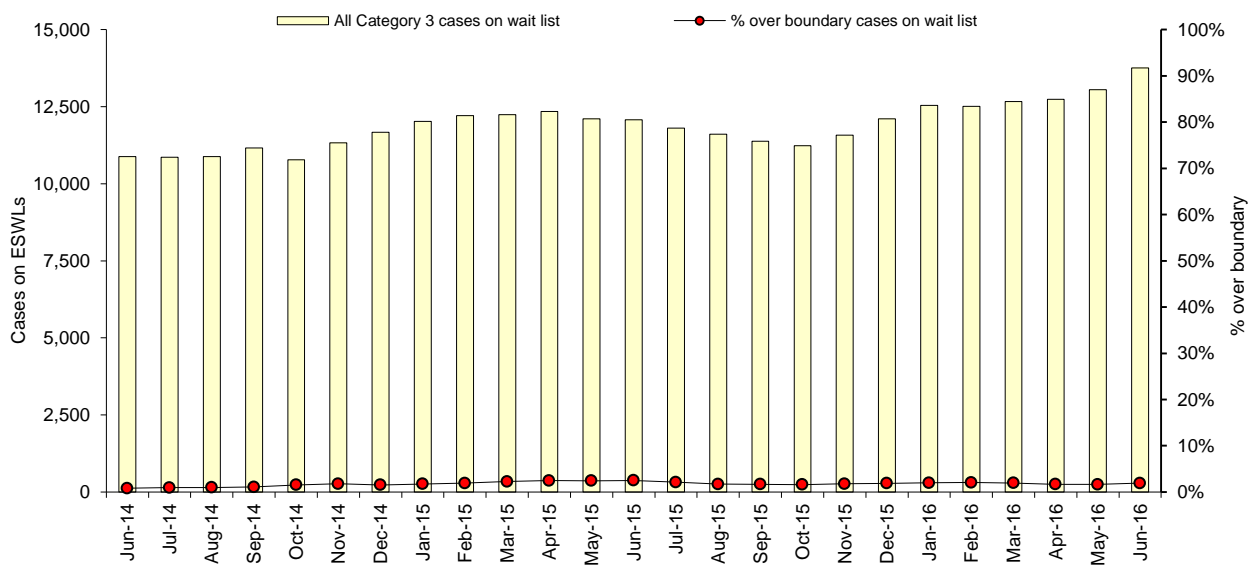


### 2.3c Category 3 cases

Table A-12 (page 29) provides a breakdown of Category 3 cases by within and over boundary status for all, metropolitan and WACHS ESWLs from January 2014 up to the current reporting month.

Figure 9 (page 9) shows Category 3 cases waiting and the proportion (%) of those that were over boundary over the past two years.

**Figure 9: Public hospital ESWL Category 3 WEST performance: proportion of Category 3 cases on wait list for longer than clinically recommended time, June 2014 - June 2016**



## 3. Admissions from wait list

### 3.1 Number of cases

Table 3 (page 10) provides comparative data on the number of admissions from all, metropolitan and WACHS ESWLs for the current reporting month, the previous month and the same month last year.

Table 3 shows that overall in June 2016, of the 7,142 admissions, 5,729 (80.2%) were from the metropolitan ESWLs and 1,413 (19.8%) were from the WACHS ESWLs.

The total of 7,142 admissions from all ESWLs was a decrease of 869 from the previous month (8,011) and a decrease of 299 over the same month last year (7,441). See Table A-2 (page 19) for monthly data from January 2014 for admissions from all ESWLs.

The total of 5,729 admissions from the metropolitan ESWLs was a decrease of 714 from the previous month (6,443) and a decrease of 235 over the same month last year (5,964).

See Table A-4 (page 21) for monthly data from January 2014 for admissions from the metropolitan ESWLs.

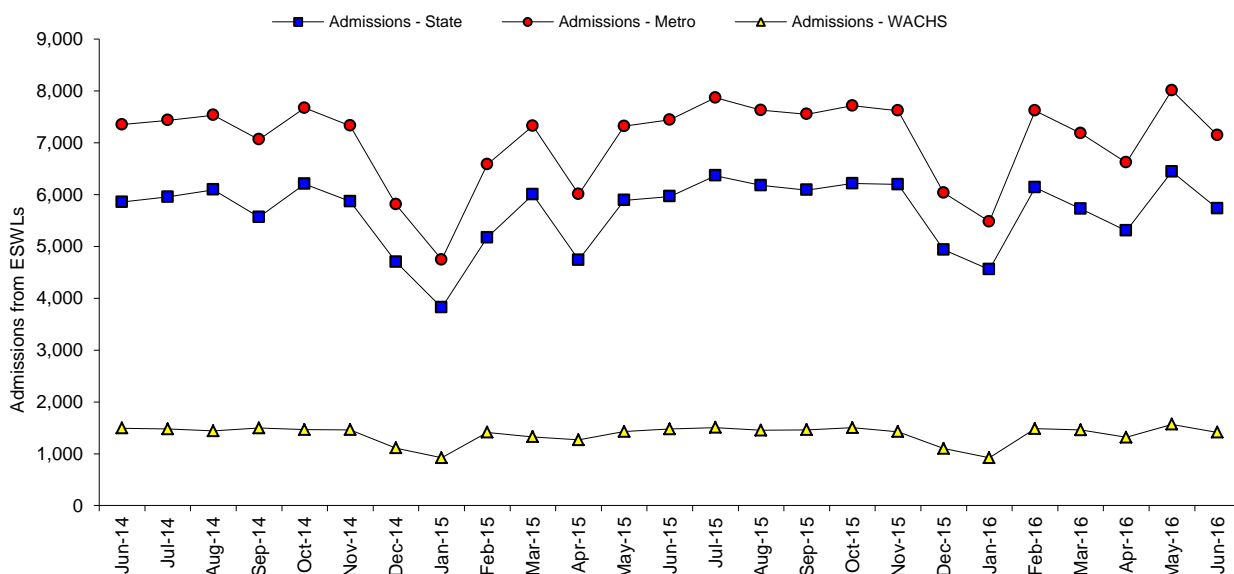
The total of 1,413 admissions from the WACHS ESWLs was a decrease of 155 from the previous month (1,568) and a decrease of 64 over the same month last year (1,477). See Table A-6 (page 23) for monthly data from January 2014 for admissions from the WACHS ESWLs.

**Table 3: Public hospital ESWL admission and waiting times for June 2015, May 2016 and June 2016**

	Cases	Waiting time (months)	
	n	Median	90th percentile
<b>Metropolitan ESWLs</b>			
June 2015	5,964	0.99	5.75
May 2016	6,443	0.99	5.46
June 2016	5,729	0.95	5.33
<b>WACHS ESWLs</b>			
June 2015	1,477	1.28	7.76
May 2016	1,568	1.05	5.79
June 2016	1,413	0.92	4.50
<b>All ESWLs</b>			
June 2015	7,441	1.05	6.21
May 2016	8,011	1.02	5.52
June 2016	7,142	0.95	5.06

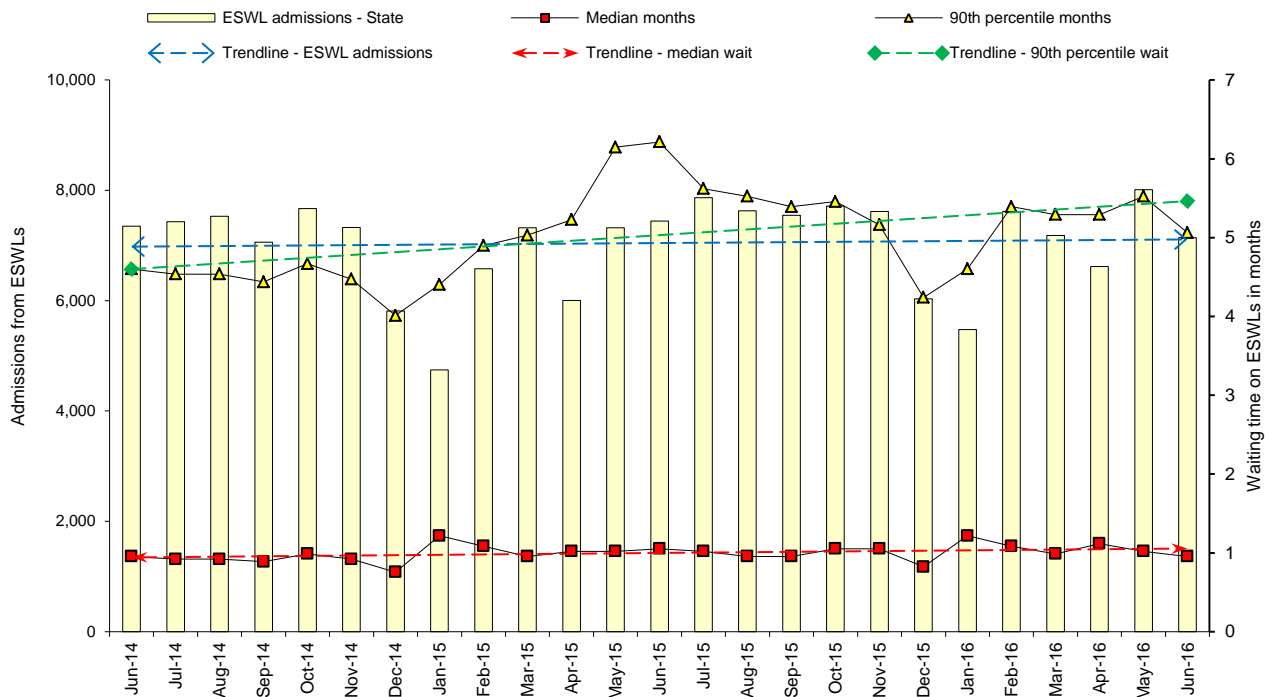
Figure 10 (page 10) shows admissions from all public hospital ESWLs over the past two years.

**Figure 10: Public hospital ESWL admissions, June 2014 - June 2016**



Figures 11 to 13 (page 11 to 12) show admissions from ESWLs and linear regression trendlines for all, metropolitan and WACHS ESWLs over the past two years respectively.

**Figure 11: Public hospital ESWL admissions, median and 90th percentile waiting time (months) to admission, June 2014 - June 2016**



**Figure 12: Metropolitan ESWL admissions, median and 90th percentile waiting time (months) to admission, June 2014 - June 2016**

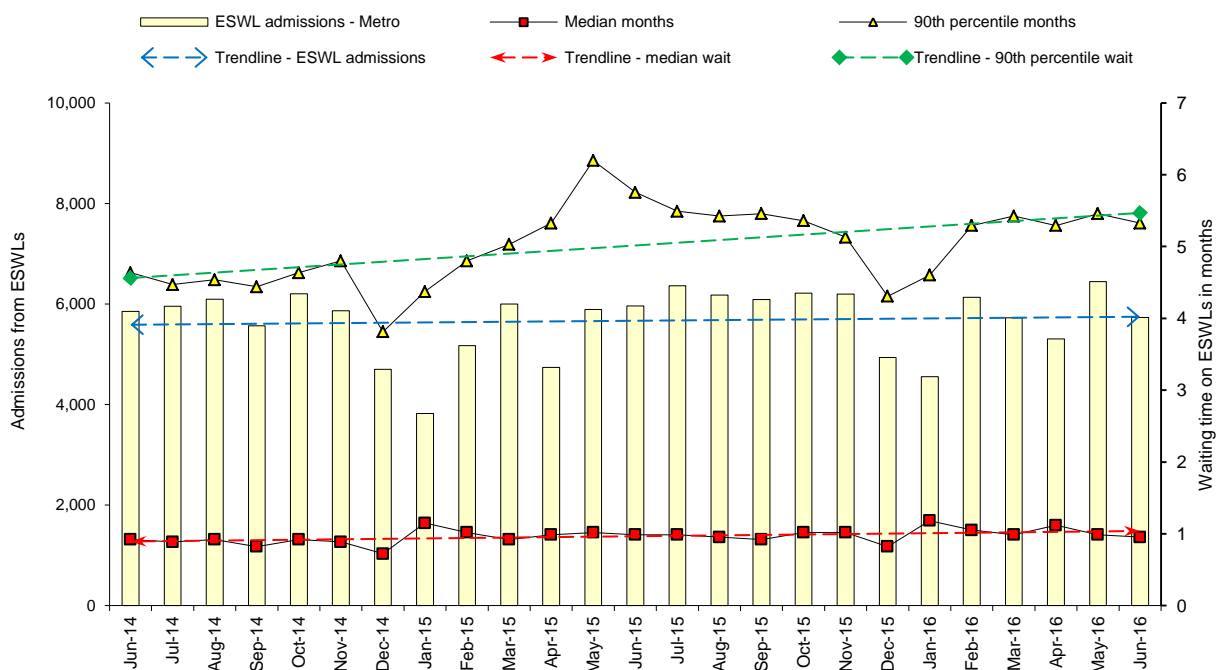
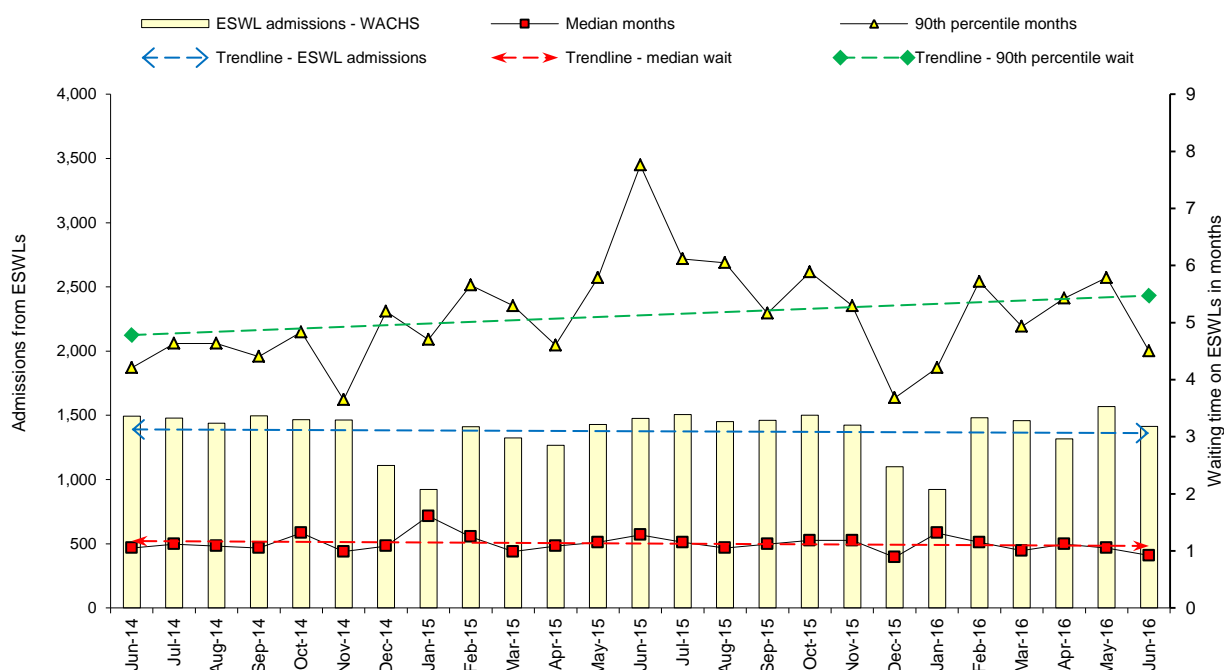




Figure 13: **WACHS ESWL admissions, median and 90th percentile waiting time (months) to admission, June 2014 - June 2016**



Tables A-13 to A-15 (pages 30 to 32) show admissions by urgency category from January 2014 for all ESWLs, the metropolitan ESWLs and the WACHS ESWLs, respectively.

## 3.2 Waiting times

Table 3 (page 10) shows the median and 90th percentile waiting time to admission from all, metropolitan and WACHS ESWLs for the current reporting month, the previous month and the same month last year.

Figures 11 and 12 (page 11) and Figure 13 (page 12) show median and 90th percentile waiting times and linear regression trendlines for all, metropolitan and WACHS ESWL admissions over the past two years.

In the June 2016 quarter, there was a total of 21,772 admissions from ESWLs, of which 20,431 (93.8%) were treated within the clinically desirable waiting time (Table 4, page 13).

Table 4 (page 13) shows that the median waiting time for the quarter was 30 days, ranging from 11 days for Category 1 cases to 60 days for Category 3 cases.

Table 4: **WA State summary, admissions during quarter by urgency category, June 2016 quarter**

Category	Admissions during quarter			
	Within boundary		Total	
	n	%	n	Median wait time (days)
Category 1	5,086	91.7%	5,546	11
Category 2	6,575	90.0%	7,309	42
Category 3	8,770	98.4%	8,917	60
<b>Total</b>	<b>20,431</b>	<b>93.8%</b>	<b>21,772</b>	<b>30</b>

Appendix B (pages 39 to 46) contains detailed quarterly tables for the State, the metropolitan area, WACHS and each of the metropolitan hospitals. The tables include median waiting times for admissions and a breakdown of admissions (within boundary and total) by urgency category for each indicator procedure.

### 3.3 Indicator procedures

Of the 21,772 admissions for the current quarter, 7,687 (35.3%) were from 15 specified surgical indicator procedures. The remaining 14,085 (64.7%) were classified as 'other' procedures. Refer to Appendix B and Notes section for further information.

## 4. Ambulatory Surgery Initiative

Table 5 (page 14) shows that in June 2016, a total of 540 cases were undertaken at public hospitals that participated in the Ambulatory Surgery Initiative (ASI).

The majority of these 540 cases were at metropolitan hospitals, which accounted for 506 (93.7%) of all cases, with the remaining 34 (6.3%) cases at WACHS hospitals.

See Table A-19 (page 36) for monthly ASI cases for the metropolitan area, WACHS and the State from January 2014 up to the present.

Table 6 (page 14 to 15) provides a summary of annual ESWL and ASI admissions in WA from 2006/2007 to 2015/2016.

Admissions from ESWLs increased by 17,122 from 2006/2007 (69,342 cases) to 2015/2016 (86,464 cases). Over the same period, ASI cases dropped by 1,586, from 8,629 cases in 2006/2007 to 7,043 cases in 2015/2016.

Table 6 (page 15) shows there was an overall growth of 19.9% in the total number of combined ESWL and ASI cases completed, from 2006/2007 (77,971 cases) to 2015/2016 (93,507 cases).

Table 5: **ASI cases undertaken by public hospital and region, June 2016**

<b>Metropolitan region</b>	<b>n</b>	<b>WACHS region</b>	<b>n</b>
Armada-Kelmscott Hospital	63	Albany Hospital	34
Bentley Hospital	107	Broome Hospital	-
Joondalup Health Campus	-		
Kalamunda Hospital	55		
Osborne Park Hospital	281		
Peel Health Campus	-		
Rockingham General Hospital	-		
St John of God Midland Public Hospital	-		
<i>Sub total</i>	<i>506</i>		<i>34</i>
<b>Total</b>			<b>540</b>

- no cases

Table 6: **Annual summary of admissions from public hospital ESWLs and completed ASI cases, 2006/2007 - 2015/2016**

	<b>Metropolitan</b>	<b>WACHS</b>	<b>Total</b>
<b>ESWL admissions</b>			
2006/2007	55,493	13,849	69,342
2007/2008	55,678	14,304	69,982
2008/2009	59,248	15,423	74,671
2009/2010	60,497	15,698	76,195
2010/2011	64,042	16,228	80,270
2011/2012	63,970	16,883	80,853
2012/2013	67,351	16,377	83,728
2013/2014	69,422	16,400	85,822
2014/2015	65,963	16,283	82,246
2015/2016	69,859	16,605	86,464
<b>ASI completed cases</b>			
2006/2007	8,384	245	8,629
2007/2008	9,301	1,242	10,543
2008/2009	9,071	778	9,849
2009/2010	10,033	731	10,764
2010/2011	11,334	786	12,120
2011/2012	11,813	589	12,402
2012/2013	11,264	539	11,803
2013/2014	9,074	519	9,593
2014/2015	7,511	545	8,056
2015/2016	6,488	555	7,043

Table 6: **Annual summary of admissions from public hospital ESWLs and completed ASI cases, 2006/2007 - 2015/2016 (continued)**

	Metropolitan	WACHS	Total
<b>Total (ESWL admissions and ASI completed cases)</b>			
2006/2007	63,877	14,094	77,971
2007/2008	64,979	15,546	80,525
2008/2009	68,319	16,201	84,520
2009/2010	70,530	16,429	86,959
2010/2011	75,376	17,014	92,390
2011/2012	75,783	17,472	93,255
2012/2013	78,615	16,916	95,531
2013/2014	78,496	16,919	95,415
2014/2015	73,474	16,828	90,302
2015/2016	76,347	17,160	93,507

## 5. Wait list activity

At the end of each month, the total number of cases on ESWLs consists of existing cases plus additions to and subtractions from the wait list during that month. Additions and subtractions consist of: new cases added, adjustments (e.g. reportable to non-reportable or vice versa due to changes in client status), and cases admitted to hospital or removed from the ESWLs.

Figures 14 to 16 (page 15 to 16) show monthly activity in terms of additions, admissions and removals from all, the metropolitan and the WACHS ESWLs over the past two years respectively.

For additional explanatory information see the Notes section. For monthly ESWL activity from January 2014 see Tables A-16 to A-18 (pages 33 to 35) for all ESWLs, the metropolitan ESWLs and the WACHS ESWLs respectively.

Figure 14: **Public hospital ESWL summary of activity, June 2014 - June 2016**

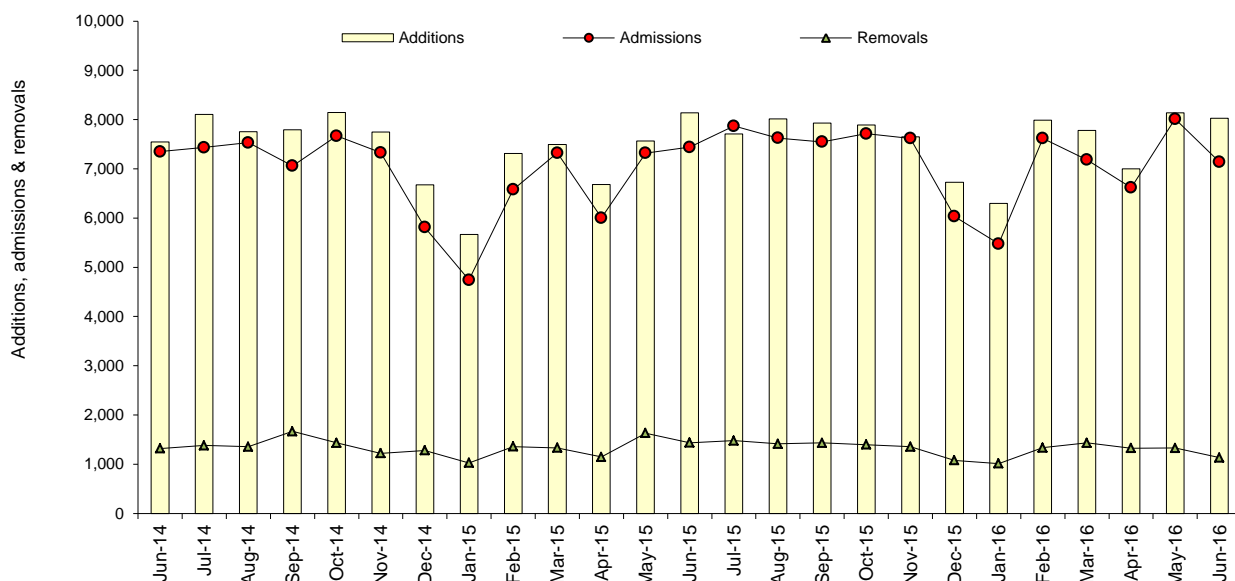


Figure 15: **Metropolitan ESWL summary of activity, June 2014 - June 2016**

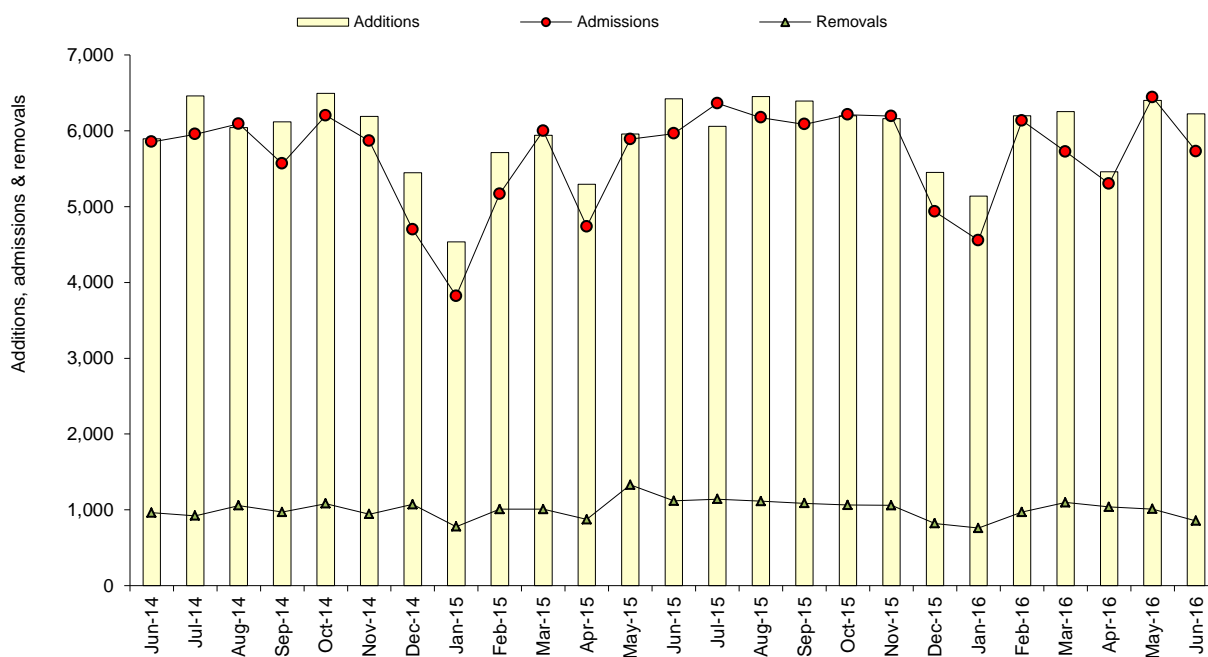
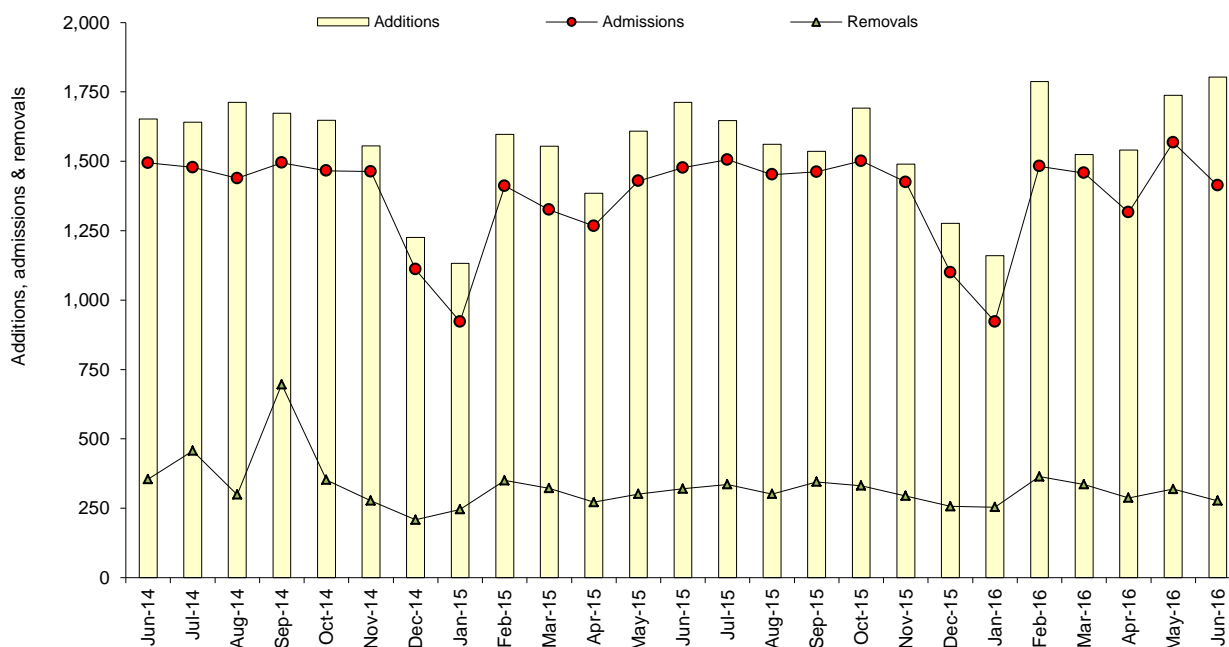


Figure 16: **WACHS ESWL summary of activity, June 2014 - June 2016**



# Appendix A: Monthly tables

Table A-1: Public hospital ESWL cases waiting and waiting times, January 2014 - June 2016.....	18
Table A-2: Public hospital ESWL admissions and waiting times, January 2014 - June 2016.....	19
Table A-3: Metropolitan ESWL cases waiting and waiting times, January 2014 - June 2016.....	20
Table A-4: Metropolitan ESWL admissions and waiting times, January 2014 - June 2016.....	21
Table A-5: WACHS ESWL cases waiting and waiting times, January 2014 - June 2016 .....	22
Table A-6: WACHS ESWL admissions and waiting times, January 2014 - June 2016 .....	23
Table A-7: Public hospital ESWL cases waiting by duration, January 2014 - June 2016.....	24
Table A-8: Metropolitan ESWL cases waiting by duration, January 2014 - June 2016 .....	25
Table A-9: WACHS ESWL cases waiting by duration, January 2014 - June 2016 .....	26
Table A-10: Public hospital ESWL Category 1 cases within and over boundary, January 2014 - June 2016.....	27
Table A-11: Public hospital ESWL Category 2 cases within and over boundary, January 2014 - June 2016.....	28
Table A-12: Public hospital ESWL Category 3 cases within and over boundary, January 2014 - June 2016.....	29
Table A-13: Public hospital ESWL admissions by urgency category, January 2014 - June 2016 .....	30
Table A-14: Metropolitan ESWL admissions by urgency category, January 2014 - June 2016.....	31
Table A-15: WACHS ESWL admissions by urgency category, January 2014 - June 2016.....	32
Table A-16: Public hospital ESWL summary of activity, January 2014 - June 2016 .....	33
Table A-17: Metropolitan ESWL summary of activity, January 2014 - June 2016.....	34
Table A-18: WACHS ESWL summary of activity, January 2014 - June 2016.....	35
Table A-19: Monthly ASI cases undertaken at all public hospitals by region, January 2014 - June 2016.....	36
Table A-20: WEST performance: proportion (%) of cases on wait list for longer than clinically recommended time, by Category, January 2016 - December 2016 .....	37

**Table A-1: Public hospital ESWL cases waiting and waiting times, January 2014 - June 2016**

	Cases on ESWLs at end of month												
	Within boundary				Over boundary				Total				
	Waiting time				Waiting time				Waiting time				Cases
	Median		Cases		Median		Cases		Median		90th percentile		
	Days	Mths	n	%	Days	Mths	n	%	Days	Mths	Days	Mths	n
2014													
Jan	67	2.20	15,651	97.3	119	3.91	435	2.7	70	2.30	226	7.43	16,086
Feb	54	1.78	15,723	97.2	123	4.04	451	2.8	67	2.20	219	7.20	16,174
Mar	49	1.61	15,978	97.7	131	4.31	375	2.3	52	1.71	227	7.46	16,353
Apr	54	1.78	15,771	97.7	135	4.44	379	2.3	56	1.84	228	7.50	16,150
May	57	1.87	15,863	97.4	122	4.01	424	2.6	58	1.91	222	7.30	16,287
Jun	54	1.78	15,741	97.3	130	4.27	443	2.7	55	1.81	228	7.50	16,184
Jul	52	1.71	16,021	97.1	132	4.34	485	2.9	56	1.84	232	7.63	16,506
Aug	55	1.81	15,780	96.8	123	4.03	516	3.2	59	1.94	223	7.33	16,296
Sep	55	1.81	16,060	96.3	130	4.27	617	3.7	58	1.91	228	7.50	16,677
Oct	52	1.71	15,483	95.9	140	4.60	658	4.1	56	1.84	227	7.46	16,141
Nov	51	1.68	16,052	95.9	146	4.80	680	4.1	54	1.78	233	7.66	16,732
Dec	58	1.91	16,125	95.4	140	4.60	781	4.6	63	2.07	233	7.66	16,906
2015													
Jan	71	2.33	16,552	93.3	137	4.50	1,198	6.7	75	2.47	247	8.12	17,750
Feb	71	2.33	16,897	92.7	141	4.64	1,327	7.3	75	2.47	240	7.89	18,224
Mar	56	1.84	16,660	92.6	144	4.73	1,334	7.4	63	2.07	244	8.02	17,994
Apr	62	2.04	16,818	91.9	163	5.36	1,485	8.1	69	2.27	248	8.15	18,303
May	62	2.04	16,668	92.4	173	5.69	1,362	7.6	69	2.27	249	8.19	18,030
Jun	56	1.84	16,995	93.0	181	5.93	1,286	7.0	62	2.04	251	8.25	18,281
Jul	58	1.91	16,559	93.6	161	5.29	1,132	6.4	65	2.14	251	8.25	17,691
Aug	59	1.94	16,578	94.4	157	5.16	990	5.6	63	2.05	237	7.79	17,568
Sep	53	1.74	16,375	94.8	153	5.03	894	5.2	57	1.87	231	7.59	17,269
Oct	56	1.84	16,249	95.7	149	4.90	723	4.3	59	1.94	229	7.53	16,972
Nov	54	1.78	16,327	95.1	152	5.00	841	4.9	59	1.94	228	7.50	17,168
Dec	59	1.94	16,816	94.4	142	4.67	999	5.6	63	2.07	232	7.63	17,815
2016													
Jan	68	2.24	17,167	93.3	139	4.57	1,226	6.7	73	2.40	237	7.79	18,393
Feb	70	2.30	17,113	93.4	143	4.70	1,204	6.6	76	2.50	242	7.96	18,317
Mar	56	1.84	17,314	93.7	153	5.03	1,166	6.3	62	2.04	234	7.69	18,480
Apr	60	1.97	17,499	94.3	158	5.19	1,063	5.7	65	2.14	241	7.92	18,562
May	61	2.01	17,781	94.2	152	5.00	1,097	5.8	68	2.24	244	8.02	18,878
Jun	59	1.94	18,639	93.8	150	4.93	1,235	6.2	64	2.10	247	8.12	19,874
Jul													
Aug													
Sep													
Oct													
Nov													
Dec													



**Table A-2: Public hospital ESWL admissions and waiting times, January 2014 - June 2016**

	ESWLs admissions in month												
	Within boundary					Over boundary				Total			
	Waiting time				Waiting time				Waiting time				Cases
	Median		Cases		Median		Cases		Median		90th percentile		n
	Days	Mths	n	%	Days	Mths	n	%	Days	Mths	Days	Mths	
<b>2014</b>													
Jan	36	1.18	5,685	96.9	101	3.30	184	3.1	38	1.25	137	4.50	5,869
Feb	29	0.95	6,850	96.1	113	3.70	276	3.9	33	1.08	145	4.77	7,126
Mar	25	0.82	7,149	95.5	118	3.86	336	4.5	27	0.89	150	4.93	7,485
Apr	26	0.85	6,211	96.3	120	3.95	239	3.7	27	0.89	145	4.77	6,450
May	29	0.95	7,299	96.3	114	3.75	282	3.7	32	1.05	159	5.23	7,581
Jun	28	0.92	7,064	96.1	111	3.65	285	3.9	29	0.95	140	4.60	7,349
Jul	27	0.89	7,125	95.9	106	3.48	308	4.1	28	0.92	138	4.54	7,433
Aug	27	0.89	7,205	95.7	112	3.68	327	4.3	28	0.92	138	4.54	7,532
Sep	25	0.82	6,780	96.0	114	3.75	281	4.0	27	0.89	135	4.44	7,061
Oct	28	0.92	7,333	95.6	116	3.81	336	4.4	30	0.99	142	4.67	7,669
Nov	26	0.85	6,986	95.3	122	4.01	343	4.7	28	0.92	136	4.47	7,329
Dec	22	0.72	5,609	96.5	119	3.91	201	3.5	23	0.76	122	4.01	5,810
<b>2015</b>													
Jan	35	1.15	4,504	95.0	103	3.39	239	5.0	37	1.22	134	4.41	4,743
Feb	28	0.92	6,146	93.4	113	3.72	434	6.6	33	1.08	149	4.90	6,580
Mar	26	0.85	6,785	92.6	122	4.01	539	7.4	29	0.95	153	5.03	7,324
Apr	28	0.92	5,563	92.6	128	4.21	442	7.4	31	1.02	159	5.23	6,005
May	28	0.92	6,780	92.6	128	4.21	539	7.4	31	1.02	187	6.15	7,319
Jun	28	0.92	6,907	92.8	118	3.86	534	7.2	32	1.05	189	6.21	7,441
Jul	28	0.92	7,359	93.5	121	3.98	510	6.5	31	1.02	171	5.62	7,869
Aug	27	0.89	7,137	93.6	124	4.08	490	6.4	29	0.95	168	5.52	7,627
Sep	27	0.89	7,059	93.5	118	3.86	490	6.5	29	0.95	164	5.39	7,549
Oct	29	0.95	7,229	93.7	120	3.95	485	6.3	32	1.05	166	5.46	7,714
Nov	28	0.92	7,173	94.1	105	3.45	446	5.9	32	1.05	157	5.16	7,619
Dec	22	0.72	5,690	94.3	99	3.25	344	5.7	25	0.82	129	4.24	6,034
<b>2016</b>													
Jan	34	1.12	5,081	92.8	94	3.09	397	7.2	37	1.22	140	4.60	5,478
Feb	28	0.92	7,075	92.9	109	3.58	543	7.1	33	1.08	164	5.39	7,618
Mar	28	0.92	6,657	92.7	110	3.62	527	7.3	30	0.99	161	5.29	7,184
Apr	29	0.95	6,166	93.2	111	3.65	453	6.8	34	1.12	161	5.29	6,619
May	28	0.92	7,545	94.2	107	3.52	466	5.8	31	1.02	168	5.52	8,011
Jun	27	0.89	6,720	94.1	101	3.32	422	5.9	29	0.95	154	5.06	7,142
Jul													
Aug													
Sep													
Oct													
Nov													
Dec													

Table A-3: Metropolitan ESWL cases waiting and waiting times, January 2014 - June 2016

	Cases on ESWLs at end of month												
	Within boundary					Over boundary					Total		
	Waiting time				Cases	Waiting time				Cases	Waiting time		Cases
	Median		Cases			Median		Cases			Median	90th	
												percentile	
Days	Mths	n	%	Days	Mths	n	%	Days	Mths	Days	Mths	n	
2014													
Jan	65	2.14	12,122	96.9	113	3.72	388	3.1	67	2.20	214	7.04	12,510
Feb	52	1.71	12,087	96.7	119	3.91	410	3.3	66	2.17	211	6.94	12,497
Mar	48	1.58	12,345	97.2	130	4.27	361	2.8	52	1.71	217	7.13	12,706
Apr	52	1.71	12,186	97.1	133	4.37	361	2.9	55	1.81	222	7.30	12,547
May	54	1.78	12,249	96.7	121	3.98	412	3.3	58	1.91	216	7.10	12,661
Jun	53	1.74	12,101	96.5	129	4.24	436	3.5	55	1.81	222	7.30	12,537
Jul	52	1.71	12,351	96.3	132	4.34	481	3.7	56	1.84	227	7.46	12,832
Aug	54	1.78	12,066	96.0	122	4.01	506	4.0	59	1.94	221	7.27	12,572
Sep	54	1.78	12,355	95.4	127	4.18	601	4.6	59	1.94	223	7.33	12,956
Oct	51	1.68	11,922	95.0	135	4.44	625	5.0	56	1.84	224	7.36	12,547
Nov	48	1.58	12,500	95.1	139	4.57	642	4.9	53	1.74	221	7.27	13,142
Dec	57	1.87	12,636	94.3	138	4.54	757	5.7	62	2.04	229	7.53	13,393
2015													
Jan	68	2.24	13,033	91.6	137	4.50	1,189	8.4	75	2.47	243	7.99	14,222
Feb	71	2.33	13,367	91.1	138	4.54	1,311	8.9	75	2.47	237	7.79	14,678
Mar	57	1.87	12,933	90.8	140	4.60	1,309	9.2	68	2.24	243	7.99	14,242
Apr	62	2.04	13,197	90.0	162	5.33	1,461	10.0	70	2.30	247	8.12	14,658
May	62	2.04	13,063	90.8	171	5.62	1,325	9.2	72	2.37	248	8.15	14,388
Jun	56	1.84	13,279	91.5	173	5.69	1,239	8.5	63	2.07	251	8.25	14,518
Jul	58	1.91	12,949	92.2	158	5.19	1,101	7.8	66	2.17	253	8.32	14,050
Aug	59	1.94	13,005	93.0	154	5.05	974	7.0	63	2.07	245	8.05	13,979
Sep	51	1.68	12,972	93.7	148	4.87	874	6.3	57	1.87	233	7.66	13,846
Oct	57	1.87	12,796	94.8	147	4.83	708	5.2	60	1.97	232	7.63	13,504
Nov	53	1.74	12,939	94.0	151	4.96	822	6.0	60	1.97	229	7.53	13,761
Dec	58	1.91	13,312	93.1	141	4.64	988	6.9	64	2.10	233	7.66	14,300
2016													
Jan	67	2.20	13,605	91.8	139	4.57	1,213	8.2	73	2.40	240	7.89	14,818
Feb	70	2.30	13,461	91.9	140	4.60	1,187	8.1	77	2.53	243	7.99	14,648
Mar	56	1.84	13,865	92.4	149	4.90	1,143	7.6	63	2.07	234	7.69	15,008
Apr	60	1.97	13,974	93.0	157	5.16	1,046	7.0	65	2.14	241	7.92	15,020
May	62	2.04	14,212	93.0	147	4.83	1,076	7.0	70	2.30	247	8.12	15,288
Jun	60	1.97	14,853	92.5	149	4.90	1,212	7.5	69	2.27	248	8.15	16,065
Jul													
Aug													
Sep													
Oct													
Nov													
Dec													

Table A-4: Metropolitan ESWL admissions and waiting times, January 2014 - June 2016

	ESWLs admissions in month												
	Within boundary				Over boundary				Total				
	Waiting time				Waiting time				Waiting time				Cases
	Median		Cases		Median		Cases		Median		90th percentile		
	Days	Mths	n	%	Days	Mths	n	%	Days	Mths	Days	Mths	n
2014													
Jan	34	1.12	4,761	96.5	99	3.25	171	3.5	36	1.18	140	4.60	4,932
Feb	28	0.92	5,440	95.3	112	3.68	269	4.7	33	1.08	145	4.77	5,709
Mar	24	0.79	5,693	94.6	116	3.81	323	5.4	27	0.89	151	4.96	6,016
Apr	24	0.79	4,953	95.6	119	3.90	228	4.4	27	0.89	145	4.77	5,181
May	28	0.92	5,729	95.5	113	3.72	270	4.5	30	0.99	159	5.23	5,999
Jun	27	0.89	5,587	95.4	111	3.65	268	4.6	28	0.92	141	4.64	5,855
Jul	24	0.79	5,651	94.9	106	3.48	304	5.1	27	0.89	136	4.47	5,955
Aug	25	0.82	5,771	94.7	112	3.67	322	5.3	28	0.92	138	4.54	6,093
Sep	23	0.76	5,290	95.0	114	3.73	276	5.0	25	0.82	135	4.44	5,566
Oct	26	0.85	5,876	94.7	115	3.78	327	5.3	28	0.92	141	4.64	6,203
Nov	25	0.82	5,531	94.3	120	3.95	335	5.7	27	0.89	146	4.80	5,866
Dec	21	0.69	4,506	95.9	119	3.91	193	4.1	22	0.72	116	3.81	4,699
2015													
Jan	32	1.05	3,603	94.3	100	3.27	218	5.7	35	1.15	133	4.37	3,821
Feb	27	0.89	4,749	91.9	112	3.68	420	8.1	31	1.02	146	4.80	5,169
Mar	25	0.82	5,478	91.3	120	3.95	521	8.7	28	0.92	153	5.03	5,999
Apr	26	0.85	4,306	90.9	127	4.18	432	9.1	30	0.99	162	5.33	4,738
May	27	0.89	5,362	91.0	126	4.14	528	9.0	31	1.02	189	6.20	5,890
Jun	27	0.89	5,443	91.3	116	3.81	521	8.7	30	0.99	175	5.75	5,964
Jul	27	0.89	5,870	92.3	118	3.88	493	7.7	30	0.99	167	5.49	6,363
Aug	26	0.85	5,705	92.4	124	4.08	470	7.6	29	0.95	165	5.42	6,175
Sep	25	0.82	5,609	92.1	116	3.81	478	7.9	28	0.92	166	5.46	6,087
Oct	28	0.92	5,742	92.4	119	3.91	471	7.6	31	1.02	163	5.36	6,213
Nov	28	0.92	5,761	93.0	104	3.42	433	7.0	31	1.02	156	5.13	6,194
Dec	22	0.71	4,600	93.2	98	3.22	334	6.8	25	0.82	131	4.31	4,934
2016													
Jan	34	1.12	4,167	91.5	93	3.06	389	8.5	36	1.18	140	4.60	4,556
Feb	27	0.89	5,603	91.3	108	3.55	533	8.7	32	1.05	161	5.29	6,136
Mar	27	0.89	5,207	90.9	109	3.58	519	9.1	30	0.99	165	5.42	5,726
Apr	28	0.92	4,858	91.6	110	3.62	445	8.4	34	1.12	161	5.29	5,303
May	27	0.89	5,991	93.0	105	3.44	452	7.0	30	0.99	166	5.46	6,443
Jun	26	0.85	5,313	92.7	101	3.32	416	7.3	29	0.95	162	5.33	5,729
Jul													
Aug													
Sep													
Oct													
Nov													
Dec													

Table A-5: WACHS ESWL cases waiting and waiting times, January 2014 - June 2016

	Cases on ESWLs at end of month													
	Within boundary					Over boundary					Total			
	Waiting time				Cases	Waiting time				Waiting time			Cases	
	Median		Cases			Median		Cases		Median		90th percentile		
	Days	Mths	n	%		Days	Mths	n	%	Days	Mths	Days		Mths
2014														
Jan	74	2.43	3,529	98.7	427	14.04	47	1.3	74	2.43	263	8.65	3,576	
Feb	70	2.30	3,636	98.9	410	13.48	41	1.1	71	2.33	248	8.15	3,677	
Mar	52	1.71	3,633	99.6	397	13.05	14	0.4	52	1.71	256	8.42	3,647	
Apr	60	1.97	3,585	99.5	391	12.85	18	0.5	61	2.01	247	8.12	3,603	
May	60	1.97	3,614	99.7	410	13.46	12	0.3	61	2.01	248	8.15	3,626	
Jun	54	1.78	3,640	99.8	367	12.07	7	0.2	54	1.78	249	8.19	3,647	
Jul	56	1.84	3,670	99.9	378	12.41	4	0.1	56	1.84	245	8.05	3,674	
Aug	59	1.94	3,714	99.7	370	12.16	10	0.3	59	1.94	231	7.59	3,724	
Sep	57	1.87	3,705	99.6	368	12.10	16	0.4	57	1.87	242	7.96	3,721	
Oct	56	1.84	3,561	99.1	375	12.33	33	0.9	57	1.87	245	8.05	3,594	
Nov	58	1.89	3,552	98.9	384	12.62	38	1.1	59	1.94	251	8.25	3,590	
Dec	64	2.10	3,489	99.3	386	12.69	24	0.7	64	2.10	252	8.28	3,513	
2015														
Jan	74	2.43	3,519	99.7	366	12.03	9	0.3	74	2.43	255	8.38	3,528	
Feb	71	2.33	3,530	99.5	373	12.26	16	0.5	71	2.33	245	8.05	3,546	
Mar	54	1.78	3,727	99.3	397	13.05	25	0.7	54	1.78	250	8.22	3,752	
Apr	64	2.10	3,621	99.3	413	13.58	24	0.7	64	2.10	258	8.48	3,645	
May	65	2.14	3,605	99.0	377	12.39	37	1.0	66	2.17	251	8.25	3,642	
Jun	56	1.84	3,716	98.8	385	12.66	47	1.2	56	1.84	249	8.19	3,763	
Jul	57	1.87	3,610	99.1	385	12.66	31	0.9	57	1.87	241	7.92	3,641	
Aug	61	2.01	3,573	99.6	432	14.20	16	0.4	61	2.01	221	7.27	3,589	
Sep	55	1.81	3,403	99.4	385	12.66	20	0.6	56	1.84	220	7.23	3,423	
Oct	53	1.74	3,453	99.6	400	13.15	15	0.4	54	1.78	220	7.23	3,468	
Nov	54	1.78	3,388	99.4	371	12.20	19	0.6	54	1.78	215	7.07	3,407	
Dec	63	2.07	3,504	99.7	388	12.76	11	0.3	63	2.07	226	7.43	3,515	
2016														
Jan	74	2.43	3,562	99.6	382	12.56	13	0.4	74	2.43	235	7.73	3,575	
Feb	73	2.40	3,652	99.5	371	12.20	17	0.5	73	2.40	229	7.53	3,669	
Mar	55	1.81	3,449	99.3	383	12.59	23	0.7	56	1.82	232	7.63	3,472	
Apr	61	2.01	3,525	99.5	396	13.02	17	0.5	64	2.10	242	7.96	3,542	
May	55	1.81	3,569	99.4	382	12.56	21	0.6	55	1.81	237	7.78	3,590	
Jun	55	1.81	3,786	99.4	393	12.92	23	0.6	55	1.81	233	7.66	3,809	
Jul														
Aug														
Sep														
Oct														
Nov														
Dec														

Table A-6: WACHS ESWL admissions and waiting times, January 2014 - June 2016

	ESWLs admissions in month												
	Within boundary				Over boundary				Total				
	Waiting time				Waiting time				Waiting time				Cases
	Median		Cases		Median		Cases		Median		90th percentile		
	Days	Mths	n	%	Days	Mths	n	%	Days	Mths	Days	Mths	n
2014													
Jan	46	1.51	924	98.6	452	14.86	13	1.4	47	1.55	122	4.01	937
Feb	35	1.15	1,410	99.5	442	14.53	7	0.5	36	1.18	150	4.93	1,417
Mar	28	0.92	1,456	99.1	465	15.29	13	0.9	28	0.92	149	4.90	1,469
Apr	29	0.95	1,258	99.1	427	14.04	11	0.9	30	0.99	141	4.64	1,269
May	37	1.22	1,570	99.2	407	13.36	12	0.8	37	1.22	158	5.19	1,582
Jun	32	1.05	1,477	98.9	387	12.72	17	1.1	32	1.05	128	4.21	1,494
Jul	34	1.12	1,474	99.7	372	12.21	4	0.3	34	1.12	141	4.64	1,478
Aug	33	1.08	1,434	99.7	369	12.13	5	0.3	33	1.08	141	4.64	1,439
Sep	32	1.05	1,490	99.7	378	12.43	5	0.3	32	1.05	134	4.41	1,495
Oct	39	1.28	1,457	99.4	379	12.46	9	0.6	40	1.32	147	4.83	1,466
Nov	30	0.99	1,455	99.5	369	12.13	8	0.5	30	0.99	111	3.65	1,463
Dec	33	1.08	1,103	99.3	372	12.21	8	0.7	33	1.08	158	5.19	1,111
2015													
Jan	48	1.58	901	97.7	400	13.15	21	2.3	49	1.61	143	4.70	922
Feb	37	1.22	1,397	99.0	392	12.87	14	1.0	38	1.25	172	5.65	1,411
Mar	30	0.99	1,307	98.6	379	12.46	18	1.4	30	0.99	161	5.29	1,325
Apr	33	1.08	1,257	99.2	392	12.89	10	0.8	33	1.08	140	4.60	1,267
May	34	1.12	1,418	99.2	431	14.17	11	0.8	35	1.15	176	5.79	1,429
Jun	39	1.27	1,464	99.1	378	12.43	13	0.9	39	1.28	236	7.76	1,477
Jul	35	1.15	1,489	98.9	404	13.28	17	1.1	35	1.15	186	6.12	1,506
Aug	32	1.04	1,432	98.6	373	12.25	20	1.4	32	1.05	184	6.05	1,452
Sep	34	1.12	1,450	99.2	408	13.40	12	0.8	34	1.12	157	5.16	1,462
Oct	36	1.18	1,487	99.1	392	12.89	14	0.9	36	1.18	179	5.88	1,501
Nov	35	1.15	1,412	99.1	388	12.76	13	0.9	36	1.18	161	5.29	1,425
Dec	26	0.85	1,090	99.1	391	12.84	10	0.9	27	0.89	112	3.68	1,100
2016													
Jan	40	1.30	914	99.1	411	13.50	8	0.9	40	1.32	128	4.21	922
Feb	34	1.12	1,472	99.3	424	13.92	10	0.7	35	1.15	174	5.72	1,482
Mar	30	0.99	1,450	99.5	371	12.20	8	0.5	31	1.00	150	4.93	1,458
Apr	34	1.12	1,308	99.4	398	13.08	8	0.6	34	1.12	165	5.42	1,316
May	31	1.02	1,554	99.1	402	13.20	14	0.9	32	1.05	176	5.79	1,568
Jun	28	0.92	1,407	99.6	99	3.24	6	0.4	28	0.92	137	4.50	1,413
Jul													
Aug													
Sep													
Oct													
Nov													
Dec													

Table A-7: Public hospital ESWL cases waiting by duration, January 2014 - June 2016

	Within 365 days		366 - 500 days		More than 500 days		More than 365 days		Total
	n	%	n	%	n	%	n	%	
<b>2014</b>									
Jan	15,968	99.3	97	0.6	21	0.1	118	0.7	16,086
Feb	16,057	99.3	101	0.6	16	0.1	117	0.7	16,174
Mar	16,268	99.5	79	0.5	6	<0.1	85	0.5	16,353
Apr	16,053	99.4	87	0.5	10	0.1	97	0.6	16,150
May	16,203	99.5	78	0.5	6	<0.1	84	0.5	16,287
Jun	16,095	99.5	84	0.5	5	<0.1	89	0.5	16,184
Jul	16,404	99.4	93	0.6	9	0.1	102	0.6	16,506
Aug	16,189	99.3	101	0.6	6	<0.1	107	0.7	16,296
Sep	16,554	99.3	113	0.7	10	0.1	123	0.7	16,677
Oct	15,974	99.0	151	0.9	16	0.1	167	1.0	16,141
Nov	16,532	98.8	173	1.0	27	0.2	200	1.2	16,732
Dec	16,725	98.9	160	0.9	21	0.1	181	1.1	16,906
<b>2015</b>									
Jan	17,537	98.8	182	1.0	31	0.2	213	1.2	17,750
Feb	17,980	98.7	203	1.1	41	0.2	244	1.3	18,224
Mar	17,706	98.4	238	1.3	50	0.3	288	1.6	17,994
Apr	17,978	98.2	261	1.4	64	0.3	325	1.8	18,303
May	17,712	98.2	260	1.4	58	0.3	318	1.8	18,030
Jun	17,944	98.2	277	1.5	60	0.3	337	1.8	18,281
Jul	17,416	98.4	224	1.3	51	0.3	275	1.6	17,691
Aug	17,347	98.7	169	1.0	52	0.3	221	1.3	17,568
Sep	17,057	98.8	166	1.0	46	0.3	212	1.2	17,269
Oct	16,774	98.8	156	0.9	42	0.2	198	1.2	16,972
Nov	16,931	98.6	188	1.1	49	0.3	237	1.4	17,168
Dec	17,556	98.5	207	1.2	52	0.3	259	1.5	17,815
<b>2016</b>									
Jan	18,120	98.5	218	1.2	55	0.3	273	1.5	18,393
Feb	18,041	98.5	230	1.3	46	0.3	276	1.5	18,317
Mar	18,218	98.6	204	1.1	58	0.3	262	1.4	18,480
Apr	18,331	98.8	169	0.9	62	0.3	231	1.2	18,562
May	18,647	98.8	163	0.9	68	0.4	231	1.2	18,878
Jun	19,583	98.5	217	1.1	74	0.4	291	1.5	19,874
Jul									
Aug									
Sep									
Oct									
Nov									
Dec									

Table A-8: Metropolitan ESWL cases waiting by duration, January 2014 - June 2016

	Within 365 days		366 - 500 days		More than 500 days		More than 365 days		Total
	n	%	n	%	n	%	n	%	
2014									
Jan	12,439	99.4	50	0.4	21	0.2	71	0.6	12,510
Feb	12,417	99.4	67	0.5	13	0.1	80	0.6	12,497
Mar	12,635	99.4	65	0.5	6	<0.1	71	0.6	12,706
Apr	12,468	99.4	71	0.6	8	0.1	79	0.6	12,547
May	12,587	99.4	68	0.5	6	<0.1	74	0.6	12,661
Jun	12,454	99.3	78	0.6	5	<0.1	83	0.7	12,537
Jul	12,734	99.2	89	0.7	9	0.1	98	0.8	12,832
Aug	12,473	99.2	93	0.7	6	<0.1	99	0.8	12,572
Sep	12,849	99.2	97	0.7	10	0.1	107	0.8	12,956
Oct	12,412	98.9	119	0.9	16	0.1	135	1.1	12,547
Nov	12,978	98.8	137	1.0	27	0.2	164	1.2	13,142
Dec	13,235	98.8	137	1.0	21	0.2	158	1.2	13,393
2015									
Jan	14,014	98.5	177	1.2	31	0.2	208	1.5	14,222
Feb	14,450	98.4	187	1.3	41	0.3	228	1.6	14,678
Mar	13,978	98.1	214	1.5	50	0.4	264	1.9	14,242
Apr	14,357	97.9	237	1.6	64	0.4	301	2.1	14,658
May	14,102	98.0	228	1.6	58	0.4	286	2.0	14,388
Jun	14,223	98.0	237	1.6	58	0.4	295	2.0	14,518
Jul	13,801	98.2	198	1.4	51	0.4	249	1.8	14,050
Aug	13,773	98.5	154	1.1	52	0.4	206	1.5	13,979
Sep	13,654	98.6	148	1.1	44	0.3	192	1.4	13,846
Oct	13,321	98.6	141	1.0	42	0.3	183	1.4	13,504
Nov	13,537	98.4	175	1.3	49	0.4	224	1.6	13,761
Dec	14,049	98.2	199	1.4	52	0.4	251	1.8	14,300
2016									
Jan	14,554	98.2	209	1.4	55	0.4	264	1.8	14,818
Feb	14,386	98.2	216	1.5	46	0.3	262	1.8	14,648
Mar	14,768	98.4	182	1.2	58	0.4	240	1.6	15,008
Apr	14,805	98.6	153	1.0	62	0.4	215	1.4	15,020
May	15,074	98.6	147	1.0	67	0.4	214	1.4	15,288
Jun	15,796	98.3	195	1.2	74	0.5	269	1.7	16,065
Jul									
Aug									
Sep									
Oct									
Nov									
Dec									



Table A-9: WACHS ESWL cases waiting by duration, January 2014 - June 2016

	Within 365 days		366 - 500 days		More than 500 days		More than 365 days		Total
	n	%	n	%	n	%	n	%	
<b>2014</b>									
Jan	3,529	98.7	47	1.3	-	0.0	47	1.3	3,576
Feb	3,640	99.0	34	0.9	3	0.1	37	1.0	3,677
Mar	3,633	99.6	14	0.4	-	0.0	14	0.4	3,647
Apr	3,585	99.5	16	0.4	2	0.1	18	0.5	3,603
May	3,616	99.7	10	0.3	-	0.0	10	0.3	3,626
Jun	3,641	99.8	6	0.2	-	0.0	6	0.2	3,647
Jul	3,670	99.9	4	0.1	-	0.0	4	0.1	3,674
Aug	3,716	99.8	8	0.2	-	0.0	8	0.2	3,724
Sep	3,705	99.6	16	0.4	-	0.0	16	0.4	3,721
Oct	3,562	99.1	32	0.9	-	0.0	32	0.9	3,594
Nov	3,554	99.0	36	1.0	-	0.0	36	1.0	3,590
Dec	3,490	99.3	23	0.7	-	0.0	23	0.7	3,513
<b>2015</b>									
Jan	3,523	99.9	5	0.1	-	0.0	5	0.1	3,528
Feb	3,530	99.5	16	0.5	-	0.0	16	0.5	3,546
Mar	3,728	99.4	24	0.6	-	0.0	24	0.6	3,752
Apr	3,621	99.3	24	0.7	-	0.0	24	0.7	3,645
May	3,610	99.1	32	0.9	-	0.0	32	0.9	3,642
Jun	3,721	98.9	40	1.1	2	0.1	42	1.1	3,763
Jul	3,615	99.3	26	0.7	-	0.0	26	0.7	3,641
Aug	3,574	99.6	15	0.4	-	0.0	15	0.4	3,589
Sep	3,403	99.4	18	0.5	2	0.1	20	0.6	3,423
Oct	3,453	99.6	15	0.4	-	0.0	15	0.4	3,468
Nov	3,394	99.6	13	0.4	-	0.0	13	0.4	3,407
Dec	3,507	99.8	8	0.2	-	0.0	8	0.2	3,515
<b>2016</b>									
Jan	3,566	99.7	9	0.3	-	0.0	9	0.3	3,575
Feb	3,655	99.6	14	0.4	-	0.0	14	0.4	3,669
Mar	3,450	99.4	22	0.6	-	0.0	22	0.6	3,472
Apr	3,526	99.5	16	0.5	-	0.0	16	0.5	3,542
May	3,573	99.5	16	0.4	1	<0.1	17	0.5	3,590
Jun	3,787	99.4	22	0.6	-	0.0	22	0.6	3,809
Jul									
Aug									
Sep									
Oct									
Nov									
Dec									

- no cases

**Table A-10: Public hospital ESWL Category 1 cases within and over boundary, January 2014 - June 2016**

	Metropolitan				WACHS				State				
	Within 30 days		> 30 days	Total	Within 30 days		> 30 days	Total	Within 30 days		> 30 days	Total	
	n	%			n	%			n	%			n
2014													
Jan	626	98.3	11	637	86	100.0	-	86	712	98.5	11	1.5	723
Feb	712	99.2	6	718	89	100.0	-	89	801	99.3	6	0.7	807
Mar	740	98.5	11	751	74	100.0	-	74	814	98.7	11	1.3	825
Apr	606	97.9	13	619	80	100.0	-	80	686	98.1	13	1.9	699
May	638	98.3	11	649	103	100.0	-	103	741	98.5	11	1.5	752
Jun	703	98.0	14	717	101	100.0	-	101	804	98.3	14	1.7	818
Jul	689	98.4	11	700	108	100.0	-	108	797	98.6	11	1.4	808
Aug	644	96.6	23	667	73	98.6	1	74	717	96.8	24	3.2	741
Sep	685	98.8	8	693	68	100.0	-	68	753	98.9	8	1.1	761
Oct	685	98.8	8	693	73	100.0	-	73	758	99.0	8	1.0	766
Nov	718	98.4	12	730	81	97.6	2	83	799	98.3	14	1.7	813
Dec	415	98.1	8	423	29	100.0	-	29	444	98.2	8	1.8	452
2015													
Jan	618	95.7	28	646	84	98.8	1	85	702	96.0	29	4.0	731
Feb	693	95.6	32	725	75	100.0	-	75	768	96.0	32	4.0	800
Mar	728	87.5	104	832	81	100.0	-	81	809	88.6	104	11.4	913
Apr	735	87.6	104	839	91	100.0	-	91	826	88.8	104	11.2	930
May	748	91.3	71	819	62	96.9	2	64	810	91.7	73	8.3	883
Jun	839	92.8	65	904	87	97.8	2	89	926	93.3	67	6.7	993
Jul	681	90.6	71	752	106	99.1	1	107	787	91.6	72	8.4	859
Aug	778	92.0	68	846	83	98.8	1	84	861	92.6	69	7.4	930
Sep	782	92.4	64	846	90	100.0	-	90	872	93.2	64	6.8	936
Oct	787	91.0	78	865	96	100.0	-	96	883	91.9	78	8.1	961
Nov	844	91.0	83	927	88	97.8	2	90	932	91.6	85	8.4	1,017
Dec	590	81.7	132	722	63	98.4	1	64	653	83.1	133	16.9	786
2016													
Jan	667	84.9	119	786	76	98.7	1	77	743	86.1	120	13.9	863
Feb	763	87.2	112	875	82	100.0	-	82	845	88.3	112	11.7	957
Mar	706	82.0	155	861	76	98.7	1	77	782	83.4	156	16.6	938
Apr	801	83.3	161	962	64	98.5	1	65	865	84.2	162	15.8	1,027
May	828	83.3	166	994	91	100.0	-	91	919	84.7	166	15.3	1,085
Jun	838	80.4	204	1042	134	100.0	-	134	972	82.7	204	17.3	1,176
Jul													
Aug													
Sep													
Oct													
Nov													
Dec													

- no cases

**Table A-11: Public hospital ESWL Category 2 cases within and over boundary, January 2014 - June 2016**

	Metropolitan				WACHS				State				
	Within 90 days		> 90 days	Total	Within 90 days		> 90 days	Total	Within 90 days		> 90 days	Total	
	n	%	n		n	%	n		n	%	n	%	
2014													
Jan	3,270	91.4	307	3,577	604	100.0	-	604	3,874	92.7	307	7.3	4,181
Feb	3,218	90.8	325	3,543	667	99.4	4	671	3,885	92.2	329	7.8	4,214
Mar	3,377	92.4	279	3,656	707	100.0	-	707	4,084	93.6	279	6.4	4,363
Apr	3,469	92.8	269	3,738	694	100.0	-	694	4,163	93.9	269	6.1	4,432
May	3,531	91.5	327	3,858	702	99.7	2	704	4,233	92.8	329	7.2	4,562
Jun	3,490	91.1	339	3,829	653	99.8	1	654	4,143	92.4	340	7.6	4,483
Jul	3,734	90.9	372	4,106	729	100.0	-	729	4,463	92.3	372	7.7	4,835
Aug	3,545	90.2	384	3,929	746	99.9	1	747	4,291	91.8	385	8.2	4,676
Sep	3,604	88.1	486	4,090	667	100.0	-	667	4,271	89.8	486	10.2	4,757
Oct	3,452	87.7	482	3,934	666	99.9	1	667	4,118	89.5	483	10.5	4,601
Nov	3,525	88.3	466	3,991	602	100.0	-	602	4,127	89.9	466	10.1	4,593
Dec	3,633	86.0	592	4,225	561	99.8	1	562	4,194	87.6	593	12.4	4,787
2015													
Jan	3,484	78.4	958	4,442	549	99.5	3	552	4,033	80.8	961	19.2	4,994
Feb	3,576	77.1	1,060	4,636	580	100.0	-	580	4,156	79.7	1,060	20.3	5,216
Mar	3,223	77.2	952	4,175	663	99.8	1	664	3,886	80.3	953	19.7	4,839
Apr	3,329	75.6	1,074	4,403	622	100.0	-	622	3,951	78.6	1,074	21.4	5,025
May	3,408	77.4	993	4,401	632	99.5	3	635	4,040	80.2	996	19.8	5,036
Jun	3,604	79.8	913	4,517	695	99.6	3	698	4,299	82.4	916	17.6	5,215
Jul	3,479	81.2	805	4,284	736	99.5	4	740	4,215	83.9	809	16.1	5,024
Aug	3,621	83.4	722	4,343	687	100.0	-	687	4,308	85.6	722	14.4	5,030
Sep	3,627	85.0	640	4,267	686	100.0	-	686	4,313	87.1	640	12.9	4,953
Oct	3,627	88.6	466	4,093	680	100.0	-	680	4,307	90.2	466	9.8	4,773
Nov	3,374	86.1	545	3,919	655	99.4	4	659	4,029	88.0	549	12.0	4,578
Dec	3,663	85.2	636	4,299	619	99.7	2	621	4,282	87.0	638	13.0	4,920
2016													
Jan	3,560	80.6	855	4,415	568	99.5	3	571	4,128	82.8	858	17.2	4,986
Feb	3,379	80.3	831	4,210	633	99.5	3	636	4,012	82.8	834	17.2	4,846
Mar	3,496	82.1	761	4,257	619	100.0	-	619	4,115	84.4	761	15.6	4,876
Apr	3,481	83.5	688	4,169	624	100.0	-	624	4,105	85.6	688	14.4	4,793
May	3,352	82.4	715	4,067	673	99.4	4	677	4,025	84.8	719	15.2	4,744
Jun	3,424	81.7	766	4,190	748	99.9	1	749	4,172	84.5	767	15.5	4,939
Jul													
Aug													
Sep													
Oct													
Nov													
Dec													

- no cases

**Table A-12: Public hospital ESWL Category 3 cases within and over boundary, January 2014 - June 2016**

	Metropolitan				WACHS				State				
	Within 365 days		> 365 days	Total	Within 365 days		> 365 days	Total	Within 365 days		> 365 days	Total	
	n	%	n		n	%	n		n	%	n		%
2014													
Jan	8,226	99.2	70	8,296	2,839	98.4	47	2,886	11,065	99.0	117	1.0	11,182
Feb	8,157	99.0	79	8,236	2,880	98.7	37	2,917	11,037	99.0	116	1.0	11,153
Mar	8,228	99.1	71	8,299	2,852	99.5	14	2,866	11,080	99.2	85	0.8	11,165
Apr	8,111	99.0	79	8,190	2,811	99.4	18	2,829	10,922	99.1	97	0.9	11,019
May	8,080	99.1	74	8,154	2,809	99.6	10	2,819	10,889	99.2	84	0.8	10,973
Jun	7,908	99.0	83	7,991	2,886	99.8	6	2,892	10,794	99.2	89	0.8	10,883
Jul	7,928	98.8	98	8,026	2,833	99.9	4	2,837	10,761	99.1	102	0.9	10,863
Aug	7,877	98.8	99	7,976	2,895	99.7	8	2,903	10,772	99.0	107	1.0	10,879
Sep	8,066	98.7	107	8,173	2,970	99.5	16	2,986	11,036	98.9	123	1.1	11,159
Oct	7,785	98.3	135	7,920	2,822	98.9	32	2,854	10,607	98.4	167	1.6	10,774
Nov	8,257	98.1	164	8,421	2,869	98.8	36	2,905	11,126	98.2	200	1.8	11,326
Dec	8,588	98.2	157	8,745	2,899	99.2	23	2,922	11,487	98.5	180	1.5	11,667
2015													
Jan	8,931	97.8	203	9,134	2,886	99.8	5	2,891	11,817	98.3	208	1.7	12,025
Feb	9,098	97.6	219	9,317	2,875	99.4	16	2,891	11,973	98.1	235	1.9	12,208
Mar	8,982	97.3	253	9,235	2,983	99.2	24	3,007	11,965	97.7	277	2.3	12,242
Apr	9,133	97.0	283	9,416	2,908	99.2	24	2,932	12,041	97.5	307	2.5	12,348
May	8,907	97.2	261	9,168	2,911	98.9	32	2,943	11,818	97.6	293	2.4	12,111
Jun	8,836	97.1	261	9,097	2,934	98.6	42	2,976	11,770	97.5	303	2.5	12,073
Jul	8,789	97.5	225	9,014	2,768	99.1	26	2,794	11,557	97.9	251	2.1	11,808
Aug	8,606	97.9	184	8,790	2,803	99.5	15	2,818	11,409	98.3	199	1.7	11,608
Sep	8,563	98.1	170	8,733	2,627	99.2	20	2,647	11,190	98.3	190	1.7	11,380
Oct	8,382	98.1	164	8,546	2,677	99.4	15	2,692	11,059	98.4	179	1.6	11,238
Nov	8,721	97.8	194	8,915	2,645	99.5	13	2,658	11,366	98.2	207	1.8	11,573
Dec	9,059	97.6	220	9,279	2,822	99.7	8	2,830	11,881	98.1	228	1.9	12,109
2016													
Jan	9,378	97.5	239	9,617	2,918	99.7	9	2,927	12,296	98.0	248	2.0	12,544
Feb	9,319	97.4	244	9,563	2,937	99.5	14	2,951	12,256	97.9	258	2.1	12,514
Mar	9,663	97.7	227	9,890	2,754	99.2	22	2,776	12,417	98.0	249	2.0	12,666
Apr	9,692	98.0	197	9,889	2,837	99.4	16	2,853	12,529	98.3	213	1.7	12,742
May	10,032	98.1	195	10,227	2,805	99.4	17	2,822	12,837	98.4	212	1.6	13,049
Jun	10,591	97.8	242	10,833	2,904	99.2	22	2,926	13,495	98.1	264	1.9	13,759
Jul													
Aug													
Sep													
Oct													
Nov													
Dec													

**Table A-13: Public hospital ESWL admissions by urgency category, January 2014 - June 2016**

	Urgency category			Total
	1	2	3	
2014				
Jan	1,445	2,319	2,105	5,869
Feb	1,717	2,607	2,802	7,126
Mar	1,835	2,646	3,004	7,485
Apr	1,749	2,268	2,433	6,450
May	1,900	2,685	2,996	7,581
Jun	1,873	2,537	2,939	7,349
Jul	1,962	2,591	2,880	7,433
Aug	1,923	2,708	2,901	7,532
Sep	1,876	2,476	2,709	7,061
Oct	1,960	2,781	2,928	7,669
Nov	1,825	2,594	2,910	7,329
Dec	1,664	1,966	2,180	5,810
2015				
Jan	1,210	1,592	1,941	4,743
Feb	1,605	2,230	2,745	6,580
Mar	1,749	2,535	3,040	7,324
Apr	1,515	2,099	2,391	6,005
May	1,814	2,456	3,049	7,319
Jun	1,784	2,494	3,163	7,441
Jul	1,932	2,686	3,251	7,869
Aug	1,714	2,620	3,293	7,627
Sep	1,838	2,665	3,046	7,549
Oct	1,748	2,739	3,227	7,714
Nov	1,848	2,665	3,106	7,619
Dec	1,665	2,054	2,315	6,034
2016				
Jan	1,281	2,087	2,110	5,478
Feb	1,723	2,711	3,184	7,618
Mar	1,750	2,496	2,938	7,184
Apr	1,668	2,302	2,649	6,619
May	1,950	2,625	3,436	8,011
Jun	1,928	2,382	2,832	7,142
Jul				
Aug				
Sep				
Oct				
Nov				
Dec				

**Table A-14: Metropolitan ESWL admissions by urgency category, January 2014 - June 2016**

	Urgency category			Total
	1	2	3	
2014				
Jan	1,305	1,977	1,650	4,932
Feb	1,477	2,176	2,056	5,709
Mar	1,595	2,236	2,185	6,016
Apr	1,511	1,878	1,792	5,181
May	1,634	2,191	2,174	5,999
Jun	1,630	2,091	2,134	5,855
Jul	1,696	2,160	2,099	5,955
Aug	1,670	2,255	2,168	6,093
Sep	1,652	2,026	1,888	5,566
Oct	1,737	2,327	2,139	6,203
Nov	1,576	2,128	2,162	5,866
Dec	1,478	1,617	1,604	4,699
2015				
Jan	1,080	1,247	1,494	3,821
Feb	1,393	1,853	1,923	5,169
Mar	1,541	2,156	2,302	5,999
Apr	1,326	1,691	1,721	4,738
May	1,554	2,036	2,300	5,890
Jun	1,565	2,095	2,304	5,964
Jul	1,710	2,236	2,417	6,363
Aug	1,481	2,189	2,505	6,175
Sep	1,630	2,209	2,248	6,087
Oct	1,534	2,266	2,413	6,213
Nov	1,622	2,244	2,328	6,194
Dec	1,480	1,684	1,770	4,934
2016				
Jan	1,129	1,770	1,657	4,556
Feb	1,500	2,321	2,315	6,136
Mar	1,558	2,075	2,093	5,726
Apr	1,458	1,851	1,994	5,303
May	1,712	2,158	2,573	6,443
Jun	1,667	1,910	2,152	5,729
Jul				
Aug				
Sep				
Oct				
Nov				
Dec				

Table A-15: **WACHS ESWL admissions by urgency category, January 2014 - June 2016**

	Urgency category			Total
	1	2	3	
2014				
Jan	140	342	455	937
Feb	240	431	746	1,417
Mar	240	410	819	1,469
Apr	238	390	641	1,269
May	266	494	822	1,582
Jun	243	446	805	1,494
Jul	266	431	781	1,478
Aug	253	453	733	1,439
Sep	224	450	821	1,495
Oct	223	454	789	1,466
Nov	249	466	748	1,463
Dec	186	349	576	1,111
2015				
Jan	130	345	447	922
Feb	212	377	822	1,411
Mar	208	379	738	1,325
Apr	189	408	670	1,267
May	260	420	749	1,429
Jun	219	399	859	1,477
Jul	222	450	834	1,506
Aug	233	431	788	1,452
Sep	208	456	798	1,462
Oct	214	473	814	1,501
Nov	226	421	778	1,425
Dec	185	370	545	1,100
2016				
Jan	152	317	453	922
Feb	223	390	869	1,482
Mar	192	421	845	1,458
Apr	210	451	655	1,316
May	238	467	863	1,568
Jun	261	472	680	1,413
Jul				
Aug				
Sep				
Oct				
Nov				
Dec				

Table A-16: Public hospital ESWL summary of activity, January 2014 - June 2016

	Last month	This month				
	On wait list (end of prior month)	Additions	Reversals, change of status, coding delays etc	Admissions	Removals	On wait list (at end of month)
<b>2014</b>						
Jan	16,017	6,036	1,003	5,869	1,101	16,086
Feb	16,086	7,684	856	7,126	1,326	16,174
Mar	16,174	7,892	1,047	7,485	1,275	16,353
Apr	16,353	6,838	725	6,450	1,316	16,150
May	16,150	8,184	817	7,581	1,283	16,287
Jun	16,287	7,548	1,015	7,349	1,317	16,184
Jul	16,184	8,102	1,032	7,433	1,379	16,506
Aug	16,506	7,755	922	7,532	1,355	16,296
Sep	16,296	7,794	1,315	7,061	1,667	16,677
Oct	16,677	8,141	425	7,669	1,433	16,141
Nov	16,141	7,746	1,394	7,329	1,220	16,732
Dec	16,732	6,672	591	5,810	1,279	16,906
<b>2015</b>						
Jan	16,906	5,666	946	4,743	1,025	17,750
Feb	17,750	7,310	1,102	6,580	1,358	18,224
Mar	18,224	7,495	929	7,324	1,330	17,994
Apr	17,994	6,681	779	6,005	1,146	18,303
May	18,303	7,568	1,109	7,319	1,631	18,030
Jun	18,030	8,135	994	7,441	1,437	18,281
Jul	18,281	7,707	1,050	7,869	1,478	17,691
Aug	17,691	8,013	905	7,627	1,414	17,568
Sep	17,568	7,928	754	7,549	1,432	17,269
Oct	17,269	7,891	921	7,714	1,395	16,972
Nov	16,972	7,651	1,517	7,619	1,353	17,168
Dec	17,168	6,726	1,032	6,034	1,077	17,815
<b>2016</b>						
Jan	17,815	6,298	770	5,478	1,012	18,393
Feb	18,393	7,987	890	7,618	1,335	18,317
Mar	18,317	7,778	1,002	7,184	1,433	18,480
Apr	18,480	7,001	1,025	6,619	1,325	18,562
May	18,562	8,139	1,517	8,011	1,329	18,878
Jun	18,878	8,027	1,243	7,142	1,132	19,874
Jul						
Aug						
Sep						
Oct						
Nov						
Dec						



Table A-17: Metropolitan ESWL summary of activity, January 2014 - June 2016

	Last month	This month				
	On wait list (end of prior month)	Additions	Reversals, change of status, coding delays etc	Admissions	Removals	On wait list (at end of month)
<b>2014</b>						
Jan	12,409	4,899	930	4,932	796	12,510
Feb	12,510	5,922	739	5,709	965	12,497
Mar	12,497	6,256	870	6,016	901	12,706
Apr	12,706	5,451	624	5,181	1,053	12,547
May	12,547	6,419	622	5,999	928	12,661
Jun	12,661	5,896	797	5,855	962	12,537
Jul	12,537	6,461	711	5,955	922	12,832
Aug	12,832	6,042	847	6,093	1,056	12,572
Sep	12,572	6,121	800	5,566	971	12,956
Oct	12,956	6,493	382	6,203	1,081	12,547
Nov	12,547	6,190	1,214	5,866	943	13,142
Dec	13,142	5,446	575	4,699	1,071	13,393
<b>2015</b>						
Jan	13,393	4,534	895	3,821	779	14,222
Feb	14,222	5,713	920	5,169	1,008	14,678
Mar	14,678	5,941	630	5,999	1,008	14,242
Apr	14,242	5,296	732	4,738	874	14,658
May	14,658	5,959	991	5,890	1,330	14,388
Jun	14,388	6,423	788	5,964	1,117	14,518
Jul	14,518	6,060	977	6,363	1,142	14,050
Aug	14,050	6,452	765	6,175	1,113	13,979
Sep	13,979	6,392	649	6,087	1,087	13,846
Oct	13,846	6,199	736	6,213	1,064	13,504
Nov	13,504	6,161	1,349	6,194	1,059	13,761
Dec	13,761	5,450	843	4,934	820	14,300
<b>2016</b>						
Jan	14,300	5,138	694	4,556	758	14,818
Feb	14,818	6,199	738	6,136	971	14,648
Mar	14,648	6,253	930	5,726	1,097	15,008
Apr	15,008	5,460	893	5,303	1,038	15,020
May	15,020	6,401	1,320	6,443	1,010	15,288
Jun	15,288	6,223	1,138	5,729	855	16,065
Jul						
Aug						
Sep						
Oct						
Nov						
Dec						

Table A-18: WACHS ESWL summary of activity, January 2014 - June 2016

	Last month	This month				
	On wait list (end of prior month)	Additions	Reversals, change of status, coding delays etc	Admissions	Removals	On wait list (at end of month)
<b>2014</b>						
Jan	3,608	1,137	73	937	305	3,576
Feb	3,576	1,762	117	1,417	361	3,677
Mar	3,677	1,636	177	1,469	374	3,647
Apr	3,647	1,387	101	1,269	263	3,603
May	3,603	1,765	195	1,582	355	3,626
Jun	3,626	1,652	218	1,494	355	3,647
Jul	3,647	1,641	321	1,478	457	3,674
Aug	3,674	1,713	75	1,439	299	3,724
Sep	3,724	1,673	515	1,495	696	3,721
Oct	3,721	1,648	43	1,466	352	3,594
Nov	3,594	1,556	180	1,463	277	3,590
Dec	3,590	1,226	16	1,111	208	3,513
<b>2015</b>						
Jan	3,513	1,132	51	922	246	3,528
Feb	3,528	1,597	182	1,411	350	3,546
Mar	3,546	1,554	299	1,325	322	3,752
Apr	3,752	1,385	47	1,267	272	3,645
May	3,645	1,609	118	1,429	301	3,642
Jun	3,642	1,712	206	1,477	320	3,763
Jul	3,763	1,647	73	1,506	336	3,641
Aug	3,641	1,561	140	1,452	301	3,589
Sep	3,589	1,536	105	1,462	345	3,423
Oct	3,423	1,692	185	1,501	331	3,468
Nov	3,468	1,490	168	1,425	294	3,407
Dec	3,407	1,276	189	1,100	257	3,515
<b>2016</b>						
Jan	3,515	1,160	76	922	254	3,575
Feb	3,575	1,788	152	1,482	364	3,669
Mar	3,669	1,525	72	1,458	336	3,472
Apr	3,472	1,541	132	1,316	287	3,542
May	3,542	1,738	197	1,568	319	3,590
Jun	3,590	1,804	105	1,413	277	3,809
Jul						
Aug						
Sep						
Oct						
Nov						
Dec						

**Table A-19: Monthly ASI cases undertaken at all public hospitals by region, January 2014 - June 2016**

	Metro	WACHS	State
<b>2014</b>			
Jan	711	45	756
Feb	750	23	773
Mar	764	57	821
Apr	652	63	715
May	805	57	862
Jun	776	41	817
Jul	807	59	866
Aug	798	66	864
Sep	812	47	859
Oct	755	39	794
Nov	742	37	779
Dec	423	38	461
<b>2015</b>			
Jan	441	46	487
Feb	540	49	589
Mar	586	28	614
Apr	519	43	562
May	540	50	590
Jun	548	43	591
Jul	580	47	627
Aug	577	47	624
Sep	521	48	569
Oct	518	47	565
Nov	533	44	577
Dec	435	38	473
<b>2016</b>			
Jan	442	44	486
Feb	557	49	606
Mar	630	53	683
Apr	526	42	568
May	663	62	725
Jun	506	34	540
Jul			
Aug			
Sep			
Oct			
Nov			
Dec			

Table A-20: **WEST performance: proportion (%) of cases on wait list for longer than clinically recommended time, by Category, January 2016 - December 2016**

	Category 1	Category 2	Category 3
<b>2016</b>			
Jan YTD	13.9%	17.2%	2.0%
Feb YTD	11.7%	17.2%	2.1%
Mar YTD	16.6%	15.6%	2.0%
Apr YTD	15.8%	14.4%	1.7%
May YTD	15.3%	15.2%	1.6%
Jun YTD	17.3%	15.5%	1.9%
Jul YTD			
Aug YTD			
Sep YTD			
Oct YTD			
Nov YTD			
Dec YTD			
<b>December 2016 Target</b>	<b>0.0%</b>	<b>0.0%</b>	<b>0.0%</b>

## Appendix B: Quarterly indicator procedure tables

Table B-1: WA State summary by indicator procedure, June 2016 quarter, admission - total and within boundary .....	39
Table B-2: Metropolitan area summary by indicator procedure, June 2016 quarter, admissions - total and within boundary.....	39
Table B-3: WACHS summary by indicator procedure, June 2016 quarter, admissions - total and within boundary .....	40
Table B-4: Armadale-Kelmscott Memorial Hospital summary by indicator procedure, June 2016 quarter, admissions - total and within boundary.....	40
Table B-5: Bentley Hospital summary by indicator procedure, June 2016 quarter, admissions - total and within boundary.....	41
Table B-6: Fiona Stanley Hospital summary by indicator procedure, June 2016 quarter, admissions - total and within boundary .....	41
Table B-7: Fremantle Hospital summary by indicator procedure, June 2016 quarter, admissions - total and within boundary.....	42
Table B-8: Joondalup Health Campus summary by indicator procedure, June 2016 quarter, admissions - total and within boundary .....	42
Table B-9: King Edward Memorial Hospital summary by indicator procedure, June 2016 quarter, admissions - total and within boundary .....	43
Table B-10: Osborne Park Hospital summary by indicator procedure, June 2016 quarter, admissions - total and within boundary .....	43
Table B-11: Peel Health Campus summary by indicator procedure, June 2016 quarter, admissions - total and within boundary .....	44
Table B-12: Princess Margaret Hospital summary by indicator procedure, June 2016 quarter, admissions - total and within boundary .....	44
Table B-13: Rockingham General Hospital summary by indicator procedure, June 2016 quarter, admissions - total and within boundary .....	45
Table B-14: Royal Perth Hospital summary by indicator procedure, June 2016 quarter, admissions - total and within boundary .....	45
Table B-15: Sir Charles Gairdner Hospital summary by indicator procedure, June 2016 quarter, admissions - total and within boundary .....	46
Table B-16: St John of God Midland Public Hospital summary by indicator procedure, June 2016 quarter, admissions - total and within boundary.....	46

**Table B-1: WA State summary by indicator procedure, June 2016 quarter, admission - total and within boundary**

Procedure	Admissions in quarter					Within boundary				
	Cat 1	Cat 2	Cat 3	Total	Median wait time (days)	Cat 1	Cat 2	Cat 3	Total	% of Total
Cataract extraction	50	306	2,072	2,428	43	48	293	2,070	2,411	99.3
Cholecystectomy	104	275	94	473	28	99	275	94	468	98.9
Coronary artery bypass graft	58	10	-	68	7	55	10	-	65	95.6
Cystoscopy	597	663	673	1,933	24	536	590	659	1,785	92.3
Haemorrhoidectomy	16	66	70	152	42	16	66	70	152	100.0
Hysterectomy	48	112	127	287	39	44	111	127	282	98.3
Inguinal herniorrhaphy	78	250	166	494	36	78	243	166	487	98.6
Myringoplasty	*	28	54	82	80	*	25	53	78	95.3
Myringotomy	19	78	59	156	48	19	67	58	144	92.3
Prostatectomy	66	64	36	166	27	62	51	36	149	89.8
Septoplasty	*	10	89	99	150	*	8	84	92	93.1
Tonsillectomy	20	142	316	478	134	19	126	307	452	94.6
Total hip replacement	13	144	176	333	76	13	115	169	297	89.2
Total knee replacement	6	140	329	475	99	5	108	308	421	88.6
Varicose veins stripping	-	9	47	56	67	-	9	47	56	100.0
Uncoded/other*	4,471	5,012	4,609	14,092	28	4,092	4,478	4,522	13,092	92.9
<b>Total</b>	<b>5,546</b>	<b>7,309</b>	<b>8,917</b>	<b>21,772</b>	<b>30</b>	<b>5,086</b>	<b>6,575</b>	<b>8,770</b>	<b>20,431</b>	<b>93.8</b>

- no cases; \* data suppressed to protect confidentiality

**Table B-2: Metropolitan area summary by indicator procedure, June 2016 quarter, admissions - total and within boundary**

Procedure	Admissions in quarter					Within boundary				
	Cat 1	Cat 2	Cat 3	Total	Median wait time (days)	Cat 1	Cat 2	Cat 3	Total	% of Total
Cataract extraction	44	235	1,570	1,849	41	42	222	1,568	1,832	99.1
Cholecystectomy	81	197	73	351	22	78	197	73	348	99.1
Coronary artery bypass graft	58	10	-	68	7	55	10	-	65	95.6
Cystoscopy	544	535	470	1,549	26	483	463	456	1,402	90.5
Haemorrhoidectomy	10	45	53	108	40	10	45	53	108	100.0
Hysterectomy	46	75	91	212	38	42	74	91	207	97.6
Inguinal herniorrhaphy	64	188	126	378	34	64	182	126	372	98.4
Myringoplasty	-	15	21	36	90	-	12	21	33	91.7
Myringotomy	13	50	33	96	56	13	39	33	85	88.5
Prostatectomy	53	54	20	127	25	49	41	20	110	86.6
Septoplasty	*	9	79	88	147	*	7	76	83	94.4
Tonsillectomy	15	124	246	385	110	14	108	238	360	93.5
Total hip replacement	12	126	148	286	76	12	97	143	252	88.1
Total knee replacement	5	126	264	395	92	*	94	248	342	87.6
Varicose veins stripping	-	*	39	39	46	-	*	39	39	100.0
Uncoded/other	3,892	4,130	3,486	11,508	28	3,511	3,598	3,406	10,515	91.4
<b>Total</b>	<b>4,837</b>	<b>5,919</b>	<b>6,719</b>	<b>17,475</b>	<b>30</b>	<b>4,379</b>	<b>5,192</b>	<b>6,591</b>	<b>16,162</b>	<b>92.5</b>

- no cases; \* data suppressed to protect confidentiality

**Table B-3: WACHS summary by indicator procedure, June 2016 quarter, admissions - total and within boundary**

Procedure	Admissions in quarter					Within boundary				
	Cat 1	Cat 2	Cat 3	Total	Median wait time (days)	Cat 1	Cat 2	Cat 3	Total	% of Total
Cataract extraction	6	71	502	579	44	6	71	502	579	100.0
Cholecystectomy	23	78	21	122	41	21	78	21	120	98.4
Coronary artery bypass graft	-	-	-	-	-	-	-	-	-	-
Cystoscopy	53	128	203	384	3	53	127	203	383	99.7
Haemorrhoidectomy	6	21	17	44	49	6	21	17	44	100.0
Hysterectomy	*	37	36	73	41	*	37	36	73	100.0
Inguinal herniorrhaphy	14	62	40	116	45	14	61	40	115	99.1
Myringoplasty	*	13	33	46	62	*	13	32	45	98.0
Myringotomy	6	28	26	60	34	6	28	25	59	98.3
Prostatectomy	13	10	16	39	29	13	10	16	39	100.0
Septoplasty	*	*	10	10	244	*	*	8	8	83.3
Tonsillectomy	5	18	70	93	182	5	18	69	92	98.9
Total hip replacement	*	18	28	46	87	*	18	26	44	95.7
Total knee replacement	*	14	65	79	140	*	14	60	74	93.8
Varicose veins stripping	-	6	8	14	85	-	6	8	14	100.0
Uncoded/other	583	886	1,123	2,592	27	583	881	1,116	2,580	99.5
<b>Total</b>	<b>709</b>	<b>1,390</b>	<b>2,198</b>	<b>4,297</b>	<b>31</b>	<b>707</b>	<b>1,383</b>	<b>2,179</b>	<b>4,269</b>	<b>99.3</b>

- no cases; \* data suppressed to protect confidentiality

**Table B-4: Armadale-Kelmscott Memorial Hospital summary by indicator procedure, June 2016 quarter, admissions - total and within boundary**

Procedure	Admissions in quarter					Within boundary				
	Cat 1	Cat 2	Cat 3	Total	Median wait time (days)	Cat 1	Cat 2	Cat 3	Total	% of Total
Cataract extraction	-	-	-	-	-	-	-	-	-	-
Cholecystectomy	8	38	*	46	20	8	38	*	46	100.0
Coronary artery bypass graft	-	-	-	-	-	-	-	-	-	-
Cystoscopy	41	25	5	71	22	41	25	5	71	100.0
Haemorrhoidectomy	*	*	*	*	*	*	*	*	*	*
Hysterectomy	-	*	9	9	99	-	*	9	9	100.0
Inguinal herniorrhaphy	*	42	*	42	24	*	42	*	42	100.0
Myringoplasty	*	*	*	*	*	*	*	*	*	*
Myringotomy	*	*	*	*	*	*	*	*	*	*
Prostatectomy	*	8	*	8	70	*	7	*	7	92.3
Septoplasty	*	*	8	8	109	*	*	8	8	100.0
Tonsillectomy	-	-	16	16	304	-	-	16	16	100.0
Total hip replacement	*	10	13	23	78	*	10	13	23	100.0
Total knee replacement	-	6	40	46	122	-	6	40	46	100.0
Varicose veins stripping	-	-	13	13	92	-	-	13	13	100.0
Uncoded/other	137	281	239	657	36	136	278	239	653	99.4
<b>Total</b>	<b>186</b>	<b>410</b>	<b>343</b>	<b>939</b>	<b>36</b>	<b>185</b>	<b>406</b>	<b>343</b>	<b>934</b>	<b>99.5</b>

- no cases; \* data suppressed to protect confidentiality

**Table B-5: Bentley Hospital summary by indicator procedure, June 2016 quarter, admissions - total and within boundary**

Procedure	Admissions in quarter					Within boundary				
	Cat 1	Cat 2	Cat 3	Total	Median wait time (days)	Cat 1	Cat 2	Cat 3	Total	% of Total
Cataract extraction	8	75	466	549	73	7	71	466	544	99.1
Cholecystectomy	5	12	9	26	16	5	12	9	26	100.0
Coronary artery bypass graft	-	-	-	-	-	-	-	-	-	-
Cystoscopy	-	-	-	-	-	-	-	-	-	-
Haemorrhoidectomy	-	*	*	*	71	-	*	*	*	100.0
Hysterectomy	*	*	*	*	*	*	*	*	*	*
Inguinal herniorrhaphy	*	14	6	20	18	*	14	6	20	100.0
Myringoplasty	*	*	*	*	*	*	*	*	*	*
Myringotomy	*	*	*	*	*	*	*	*	*	*
Prostatectomy	-	-	-	-	-	-	-	-	-	-
Septoplasty	*	*	*	*	*	*	*	*	*	*
Tonsillectomy	*	*	*	*	*	*	*	*	*	*
Total hip replacement	-	-	-	-	-	-	-	-	-	-
Total knee replacement	-	-	-	-	-	-	-	-	-	-
Varicose veins stripping	-	-	-	-	-	-	-	-	-	-
Uncoded/other	47	143	195	385	46	34	116	194	344	87.9
<b>Total</b>	<b>60</b>	<b>244</b>	<b>676</b>	<b>980</b>	<b>61</b>	<b>46</b>	<b>213</b>	<b>675</b>	<b>934</b>	<b>95.2</b>

- no cases, \* data suppressed to protect confidentiality

**Table B-6: Fiona Stanley Hospital summary by indicator procedure, June 2016 quarter, admissions - total and within boundary**

Procedure	Admissions in quarter					Within boundary				
	Cat 1	Cat 2	Cat 3	Total	Median wait time (days)	Cat 1	Cat 2	Cat 3	Total	% of Total
Cataract extraction	-	-	-	-	-	-	-	-	-	-
Cholecystectomy	*	*	*	*	*	*	*	*	*	*
Coronary artery bypass graft	33	8	-	41	5	32	8	-	40	97.6
Cystoscopy	155	98	34	287	35	118	67	26	211	73.5
Haemorrhoidectomy	*	*	*	*	*	*	*	*	*	*
Hysterectomy	*	8	5	13	33	*	7	5	12	92.9
Inguinal herniorrhaphy	*	*	*	*	*	*	*	*	*	*
Myringoplasty	*	*	*	*	*	*	*	*	*	*
Myringotomy	-	7	-	7	202	-	-	-	-	0.0
Prostatectomy	7	*	-	7	56	*	*	-	*	40.0
Septoplasty	-	-	-	-	-	-	-	-	-	-
Tonsillectomy	*	9	*	9	175	*	*	*	*	30.8
Total hip replacement	*	*	*	*	*	*	*	*	*	*
Total knee replacement	*	*	*	*	*	*	*	*	*	*
Varicose veins stripping	-	-	-	-	-	-	-	-	-	-
Uncoded/other	746	446	86	1,278	24	572	301	84	957	74.5
<b>Total</b>	<b>941</b>	<b>576</b>	<b>125</b>	<b>1,642</b>	<b>26</b>	<b>722</b>	<b>383</b>	<b>115</b>	<b>1,220</b>	<b>74.3</b>

- no cases, \* data suppressed to protect confidentiality



**Table B-7: Fremantle Hospital summary by indicator procedure, June 2016 quarter, admissions - total and within boundary**

Procedure	Admissions in quarter					Within boundary				
	Cat 1	Cat 2	Cat 3	Total	Median wait time (days)	Cat 1	Cat 2	Cat 3	Total	% of Total
Cataract extraction	9	64	145	218	53	9	64	145	218	100.0
Cholecystectomy	14	21	12	47	21	14	21	12	47	100.0
Coronary artery bypass graft	-	-	-	-	-	-	-	-	-	-
Cystoscopy	-	-	-	-	-	-	-	-	-	-
Haemorrhoidectomy	*	*	*	*	*	*	*	*	*	*
Hysterectomy	-	-	-	-	-	-	-	-	-	-
Inguinal herniorrhaphy	9	24	23	56	47	9	24	23	56	100.0
Myringoplasty	-	-	-	-	-	-	-	-	-	-
Myringotomy	-	-	-	-	-	-	-	-	-	-
Prostatectomy	-	-	-	-	-	-	-	-	-	-
Septoplasty	-	-	-	-	-	-	-	-	-	-
Tonsillectomy	-	-	-	-	-	-	-	-	-	-
Total hip replacement	*	23	33	56	72	*	23	32	55	98.3
Total knee replacement	*	33	46	79	75	*	30	44	74	93.8
Varicose veins stripping	-	-	-	-	-	-	-	-	-	-
Uncoded/other	180	295	248	723	46	175	246	240	661	91.2
<b>Total</b>	<b>212</b>	<b>460</b>	<b>507</b>	<b>1,179</b>	<b>49</b>	<b>207</b>	<b>408</b>	<b>496</b>	<b>1,111</b>	<b>94.2</b>

- no cases, \* data suppressed to protect confidentiality

**Table B-8: Joondalup Health Campus summary by indicator procedure, June 2016 quarter, admissions - total and within boundary**

Procedure	Admissions in quarter					Within boundary				
	Cat 1	Cat 2	Cat 3	Total	Median wait time (days)	Cat 1	Cat 2	Cat 3	Total	% of Total
Cataract extraction	-	-	193	193	20	-	-	192	192	99.5
Cholecystectomy	-	16	17	33	15	-	16	17	33	100.0
Coronary artery bypass graft	-	-	-	-	-	-	-	-	-	-
Cystoscopy	31	16	126	173	22	31	16	126	173	100.0
Haemorrhoidectomy	-	13	10	23	25	-	13	10	23	100.0
Hysterectomy	*	15	17	32	36	*	15	17	32	100.0
Inguinal herniorrhaphy	-	17	29	46	20	-	17	29	46	100.0
Myringoplasty	*	*	*	*	*	*	*	*	*	*
Myringotomy	*	*	*	*	*	*	*	*	*	*
Prostatectomy	12	*	6	18	21	12	*	6	18	100.0
Septoplasty	-	*	12	12	19	-	*	12	12	100.0
Tonsillectomy	-	*	36	36	59	-	*	36	36	100.0
Total hip replacement	-	7	27	34	71	-	7	27	34	100.0
Total knee replacement	-	9	38	47	69	-	9	38	47	100.0
Varicose veins stripping	-	-	13	13	11	-	-	13	13	100.0
Uncoded/other	119	316	701	1,136	21	117	314	699	1,130	99.5
<b>Total</b>	<b>162</b>	<b>409</b>	<b>1,225</b>	<b>1,796</b>	<b>22</b>	<b>160</b>	<b>407</b>	<b>1,222</b>	<b>1,789</b>	<b>99.6</b>

- no cases, \* data suppressed to protect confidentiality

**Table B-9: King Edward Memorial Hospital summary by indicator procedure, June 2016 quarter, admissions - total and within boundary**

Procedure	Admissions in quarter					Within boundary				
	Cat 1	Cat 2	Cat 3	Total	Median wait time (days)	Cat 1	Cat 2	Cat 3	Total	% of Total
Cataract extraction	-	-	-	-	-	-	-	-	-	-
Cholecystectomy	-	-	-	-	-	-	-	-	-	-
Coronary artery bypass graft	-	-	-	-	-	-	-	-	-	-
Cystoscopy	7	7	*	14	11	7	7	*	14	100.0
Haemorrhoidectomy	-	-	-	-	-	-	-	-	-	-
Hysterectomy	38	26	31	95	27	34	26	31	91	95.8
Inguinal herniorrhaphy	-	-	-	-	-	-	-	-	-	-
Myringoplasty	-	-	-	-	-	-	-	-	-	-
Myringotomy	-	-	-	-	-	-	-	-	-	-
Prostatectomy	-	-	-	-	-	-	-	-	-	-
Septoplasty	-	-	-	-	-	-	-	-	-	-
Tonsillectomy	-	-	-	-	-	-	-	-	-	-
Total hip replacement	-	-	-	-	-	-	-	-	-	-
Total knee replacement	-	-	-	-	-	-	-	-	-	-
Varicose veins stripping	-	-	-	-	-	-	-	-	-	-
Uncoded/other	234	226	138	598	22	229	223	138	590	98.7
<b>Total</b>	<b>279</b>	<b>259</b>	<b>169</b>	<b>707</b>	<b>23</b>	<b>270</b>	<b>256</b>	<b>169</b>	<b>695</b>	<b>98.3</b>

- no cases, \* data suppressed to protect confidentiality

**Table B-10: Osborne Park Hospital summary by indicator procedure, June 2016 quarter, admissions - total and within boundary**

Procedure	Admissions in quarter					Within boundary				
	Cat 1	Cat 2	Cat 3	Total	Median wait time (days)	Cat 1	Cat 2	Cat 3	Total	% of Total
Cataract extraction	*	9	259	268	25	*	9	259	268	100.0
Cholecystectomy	*	17	13	30	64	*	17	13	30	100.0
Coronary artery bypass graft	-	-	-	-	-	-	-	-	-	-
Cystoscopy	98	95	40	233	28	91	86	38	215	92.3
Haemorrhoidectomy	-	5	9	14	172	-	5	9	14	100.0
Hysterectomy	-	*	8	8	71	-	*	8	8	100.0
Inguinal herniorrhaphy	-	16	28	44	76	-	15	28	43	97.7
Myringoplasty	-	*	5	5	106	-	*	5	5	100.0
Myringotomy	-	-	-	-	-	-	-	-	-	-
Prostatectomy	*	*	*	*	*	*	*	*	*	*
Septoplasty	-	*	20	20	185	-	-	18	18	81.8
Tonsillectomy	-	*	14	14	95	-	*	14	14	100.0
Total hip replacement	*	20	15	35	76	*	15	15	30	86.1
Total knee replacement	-	15	27	42	91	-	14	27	41	97.6
Varicose veins stripping	*	*	*	*	*	*	*	*	*	*
Uncoded/other	33	253	261	547	58	30	241	260	531	97.3
<b>Total</b>	<b>131</b>	<b>430</b>	<b>699</b>	<b>1,260</b>	<b>53</b>	<b>121</b>	<b>402</b>	<b>694</b>	<b>1,217</b>	<b>96.6</b>

- no cases, \* data suppressed to protect confidentiality

**Table B-11: Peel Health Campus summary by indicator procedure, June 2016 quarter, admissions - total and within boundary**

Procedure	Admissions in quarter					Within boundary				
	Cat 1	Cat 2	Cat 3	Total	Median wait time (days)	Cat 1	Cat 2	Cat 3	Total	% of Total
Cataract extraction	10	*	174	184	17	9	*	173	182	98.9
Cholecystectomy	7	5	9	21	9	5	5	9	19	90.5
Coronary artery bypass graft	-	-	-	-	-	-	-	-	-	-
Cystoscopy	5	*	138	143	21	*	*	138	138	99.3
Haemorrhoidectomy	*	*	*	*	*	*	*	*	*	*
Hysterectomy	*	*	14	14	90	*	*	14	14	100.0
Inguinal herniorrhaphy	6	*	16	22	8	6	*	16	22	100.0
Myringoplasty	*	*	*	*	*	*	*	*	*	*
Myringotomy	*	*	*	*	*	*	*	*	*	*
Prostatectomy	*	*	*	*	*	*	*	*	*	*
Septoplasty	*	*	*	*	*	*	*	*	*	*
Tonsillectomy	-	*	17	17	23	-	*	17	17	100.0
Total hip replacement	-	6	15	21	49	-	6	15	21	100.0
Total knee replacement	-	6	21	27	61	-	*	21	21	92.6
Varicose veins stripping	*	*	*	*	*	*	*	*	*	*
Uncoded/other	165	97	380	642	13	164	100	379	643	98.8
<b>Total</b>	<b>193</b>	<b>114</b>	<b>784</b>	<b>1,091</b>	<b>15</b>	<b>184</b>	<b>111</b>	<b>782</b>	<b>1,077</b>	<b>98.7</b>

- no cases, \* data suppressed to protect confidentiality

**Table B-12: Princess Margaret Hospital summary by indicator procedure, June 2016 quarter, admissions - total and within boundary**

Procedure	Admissions in quarter					Within boundary				
	Cat 1	Cat 2	Cat 3	Total	Median wait time (days)	Cat 1	Cat 2	Cat 3	Total	% of Total
Cataract extraction	7	6	-	13	25	7	6	-	13	100.0
Cholecystectomy	*	*	*	*	*	*	*	*	*	*
Coronary artery bypass graft	-	-	-	-	-	-	-	-	-	-
Cystoscopy	6	25	6	37	41	6	25	6	37	100.0
Haemorrhoidectomy	*	*	*	*	*	*	*	*	*	*
Hysterectomy	-	-	-	-	-	-	-	-	-	-
Inguinal herniorrhaphy	19	10	-	29	21	19	10	-	29	100.0
Myringoplasty	-	6	11	17	98	-	6	11	17	100.0
Myringotomy	11	37	6	54	43	11	37	6	54	100.0
Prostatectomy	-	-	-	-	-	-	-	-	-	-
Septoplasty	*	*	*	*	*	*	*	*	*	*
Tonsillectomy	7	89	83	179	84	7	89	83	179	100.0
Total hip replacement	-	-	-	-	-	-	-	-	-	-
Total knee replacement	-	-	-	-	-	-	-	-	-	-
Varicose veins stripping	-	-	-	-	-	-	-	-	-	-
Uncoded/other	303	492	321	1,116	32	301	490	321	1,112	99.6
<b>Total</b>	<b>353</b>	<b>665</b>	<b>427</b>	<b>1,445</b>	<b>39</b>	<b>351</b>	<b>663</b>	<b>427</b>	<b>1,441</b>	<b>99.7</b>

- no cases, \* data suppressed to protect confidentiality

**Table B-13: Rockingham General Hospital summary by indicator procedure, June 2016 quarter, admissions - total and within boundary**

Procedure	Admissions in quarter					Within boundary				
	Cat 1	Cat 2	Cat 3	Total	Median wait time (days)	Cat 1	Cat 2	Cat 3	Total	% of Total
Cataract extraction	-	-	-	-	-	-	-	-	-	-
Cholecystectomy	16	28	*	44	36	16	28	*	44	100.0
Coronary artery bypass graft	-	-	-	-	-	-	-	-	-	-
Cystoscopy	72	41	36	149	75	72	24	35	131	87.9
Haemorrhoidectomy	*	7	*	7	66	*	7	*	7	100.0
Hysterectomy	*	7	*	7	56	*	7	*	7	100.0
Inguinal herniorrhaphy	6	23	*	29	70	6	18	*	24	83.9
Myringoplasty	*	*	*	*	*	*	*	*	*	*
Myringotomy	*	*	*	*	*	*	*	*	*	*
Prostatectomy	9	7	*	16	28	9	*	*	9	70.6
Septoplasty	*	*	*	*	*	*	*	*	*	*
Tonsillectomy	-	6	9	15	364	-	*	*	*	20.0
Total hip replacement	-	13	*	13	85	-	8	*	8	68.8
Total knee replacement	-	15	7	22	98	-	7	7	14	63.6
Varicose veins stripping	*	*	*	*	*	*	*	*	*	*
Uncoded/other	149	238	129	516	56	149	176	127	452	86.8
<b>Total</b>	<b>252</b>	<b>385</b>	<b>181</b>	<b>818</b>	<b>61</b>	<b>252</b>	<b>275</b>	<b>169</b>	<b>696</b>	<b>85.4</b>

- no cases, \* data suppressed to protect confidentiality

**Table B-14: Royal Perth Hospital summary by indicator procedure, June 2016 quarter, admissions - total and within boundary**

Procedure	Admissions in quarter					Within boundary				
	Cat 1	Cat 2	Cat 3	Total	Median wait time (days)	Cat 1	Cat 2	Cat 3	Total	% of Total
Cataract extraction	8	11	22	41	115	8	6	22	36	87.8
Cholecystectomy	10	8	*	18	17	9	8	*	17	94.7
Coronary artery bypass graft	-	-	-	-	-	-	-	-	-	-
Cystoscopy	82	81	61	224	48	69	69	58	196	87.5
Haemorrhoidectomy	*	*	-	*	11	*	*	-	*	100.0
Hysterectomy	-	-	-	-	-	-	-	-	-	-
Inguinal herniorrhaphy	*	*	*	*	50	*	*	*	*	100.0
Myringoplasty	*	*	*	*	*	*	*	*	*	*
Myringotomy	*	*	*	*	*	*	*	*	*	*
Prostatectomy	*	8	-	8	102	*	*	-	*	50.0
Septoplasty	-	-	6	6	217	-	-	6	6	100.0
Tonsillectomy	-	7	*	7	110	-	*	*	*	70.0
Total hip replacement	5	18	12	35	91	5	11	9	25	71.4
Total knee replacement	*	15	30	45	209	*	6	18	24	53.2
Varicose veins stripping	*	*	*	*	*	*	*	*	*	*
Uncoded/other	792	505	173	1,470	27	669	358	140	1,167	78.7
<b>Total</b>	<b>897</b>	<b>653</b>	<b>304</b>	<b>1,854</b>	<b>33</b>	<b>760</b>	<b>458</b>	<b>253</b>	<b>1,471</b>	<b>79.4</b>

- no cases, \* data suppressed to protect confidentiality

**Table B-15: Sir Charles Gairdner Hospital summary by indicator procedure, June 2016 quarter, admissions - total and within boundary**

Procedure	Admissions in quarter					Within boundary				
	Cat 1	Cat 2	Cat 3	Total	Median wait time (days)	Cat 1	Cat 2	Cat 3	Total	% of Total
Cataract extraction	*	22	113	135	85	*	19	113	132	97.8
Cholecystectomy	*	17	6	23	23	*	17	6	23	100.0
Coronary artery bypass graft	25	*	-	25	10	23	*	-	23	92.6
Cystoscopy	38	34	11	83	27	35	31	11	77	92.8
Haemorrhoidectomy	*	*	*	*	*	*	*	*	*	*
Hysterectomy	*	*	*	*	*	*	*	*	*	*
Inguinal herniorrhaphy	*	6	*	6	34	*	6	*	6	100.0
Myringoplasty	*	*	*	*	*	*	*	*	*	*
Myringotomy	*	*	*	*	*	*	*	*	*	*
Prostatectomy	14	*	*	14	20	14	*	*	14	100.0
Septoplasty	-	*	11	11	188	-	*	10	10	92.3
Tonsillectomy	*	-	7	7	69	*	-	7	7	100.0
Total hip replacement	*	29	8	37	82	*	17	7	24	65.8
Total knee replacement	*	25	33	58	100	*	17	31	48	83.1
Varicose veins stripping	*	*	*	*	*	*	*	*	*	*
Uncoded/other	906	683	540	2,129	21	862	610	512	1,984	93.1
<b>Total</b>	<b>983</b>	<b>816</b>	<b>729</b>	<b>2,528</b>	<b>26</b>	<b>934</b>	<b>717</b>	<b>697</b>	<b>2,348</b>	<b>92.9</b>

- no cases, \* data suppressed to protect confidentiality

**Table B-16: St John of God Midland Public Hospital summary by indicator procedure, June 2016 quarter, admissions - total and within boundary**

Procedure	Admissions in quarter					Within boundary				
	Cat 1	Cat 2	Cat 3	Total	Median wait time (days)	Cat 1	Cat 2	Cat 3	Total	% of Total
Cataract extraction	-	46	198	244	20	-	45	198	243	99.6
Cholecystectomy	13	31	*	44	32	13	31	*	44	100.0
Coronary artery bypass graft	-	-	-	-	-	-	-	-	-	-
Cystoscopy	9	111	10	130	14	9	111	10	130	100.0
Haemorrhoidectomy	*	*	*	*	32	*	*	*	*	*
Hysterectomy	*	*	*	*	54	*	*	*	*	*
Inguinal herniorrhaphy	13	29	10	52	28	13	29	10	52	100.0
Myringoplasty	*	*	*	*	179	*	*	*	*	*
Myringotomy	*	*	*	*	145	*	*	*	*	*
Prostatectomy	*	13	-	13	18	*	13	-	13	100.0
Septoplasty	-	-	5	5	61	-	-	5	5	100.0
Tonsillectomy	-	*	38	38	124	-	*	37	37	97.4
Total hip replacement	-	-	21	21	55	-	-	21	21	100.0
Total knee replacement	-	*	22	22	52	-	*	22	22	100.0
Varicose veins stripping	*	*	*	*	65	*	*	*	*	*
Uncoded/other	153	268	246	667	27	152	264	246	662	99.2
<b>Total</b>	<b>188</b>	<b>498</b>	<b>550</b>	<b>1,236</b>	<b>24</b>	<b>187</b>	<b>493</b>	<b>549</b>	<b>1,229</b>	<b>99.4</b>

- no cases, \* data suppressed to protect confidentiality.



**This document can be made available in alternative formats  
on request for a person with a disability.**

© Department of Health 2016

Copyright to this material is vested in the State of Western Australia unless otherwise indicated. Apart from any fair dealing for the purposes of private study, research, criticism or review, as permitted under the provisions of the *Copyright Act 1968*, no part may be reproduced or re-used for any purposes whatsoever without written permission of the State of Western Australia.