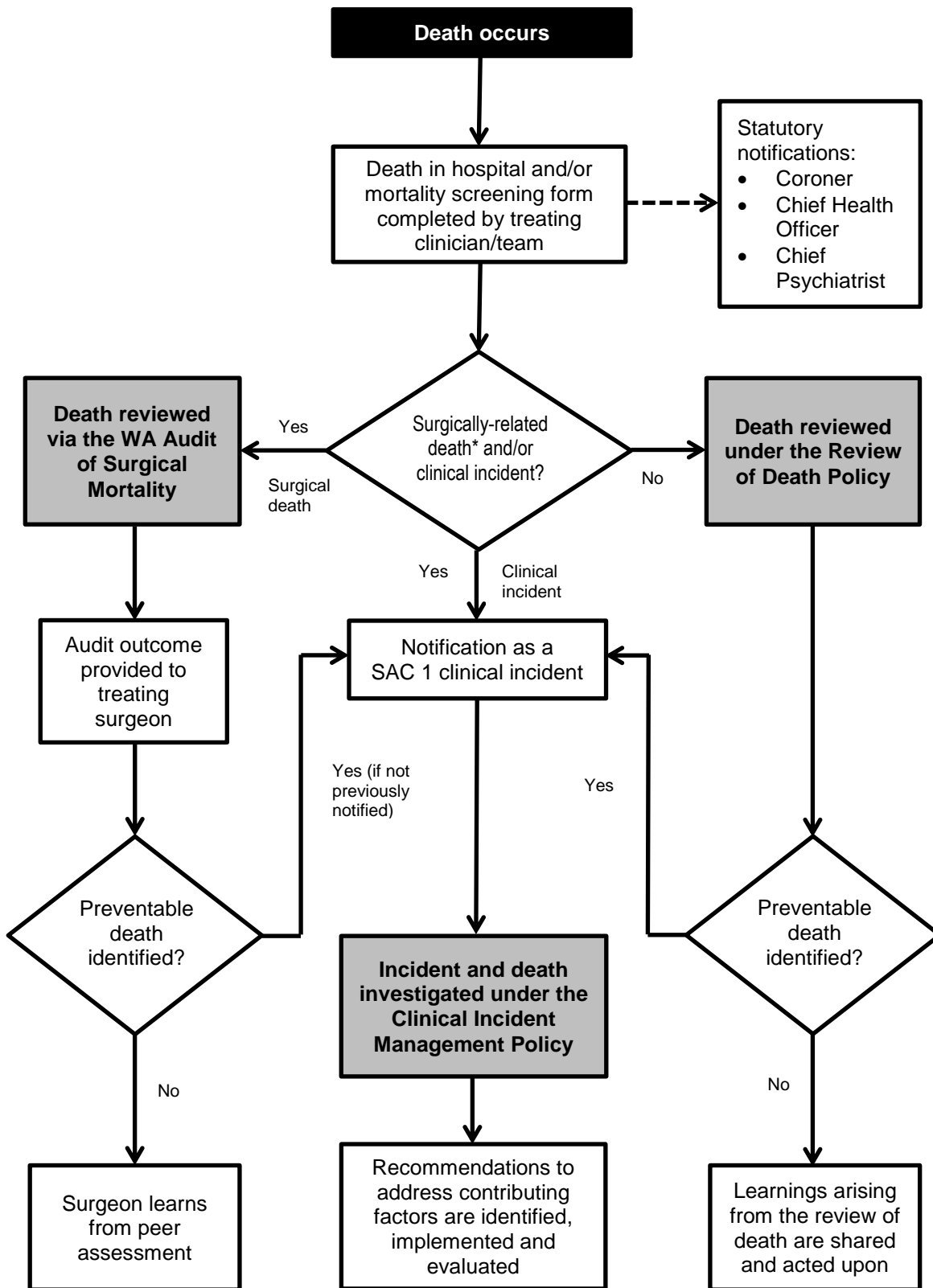


Review of Death flowchart



*Surgically-related deaths include deaths under the care of a surgeon where a surgical procedure was performed, and where no procedure was undertaken unless a decision for terminal care had been made at the point of admission. A surgically-related death where a clinical incident is thought to have occurred must be concurrently investigated as a SAC 1 clinical incident while being reviewed via the WAASM. Non-operative terminal care cases are reviewed under the Review of Death Policy unless a clinical incident is suspected to have occurred.