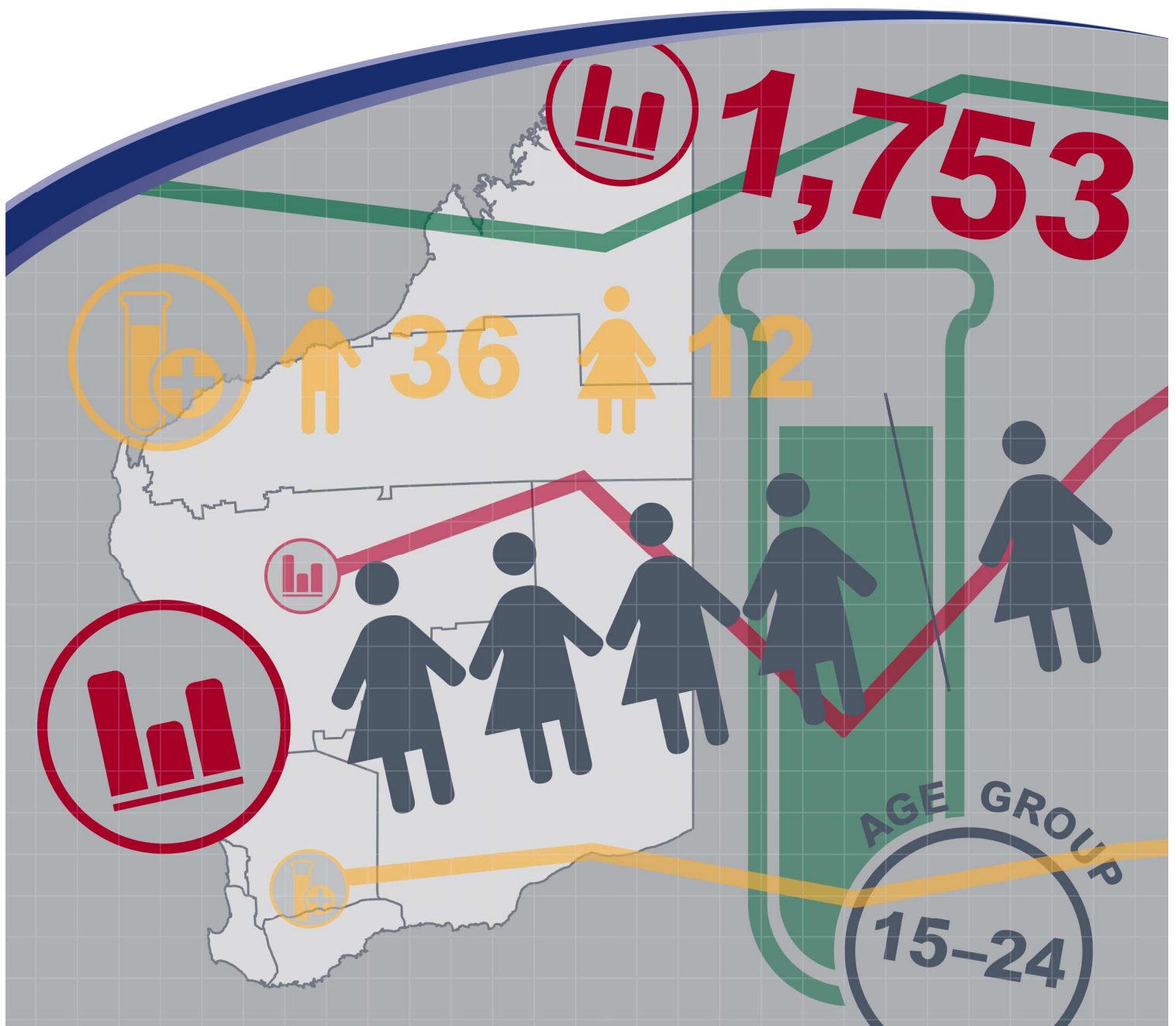




The Epidemiology of Notifiable Sexually Transmitted Infections and Blood-Borne Viruses in Western Australia 2013 - Appendix



Acknowledgments

We acknowledge the many doctors, nurses and pathology laboratories that have provided the notifications and testing data upon which this report is based.

Contributors/Editors

Kellie Mitchell, Donna Mak, Carolien Giele and Byron Minas

Communicable Disease Control Directorate
Department of Health, Western Australia
PO Box 8172
Perth Business Centre
Western Australia 6849

Telephone: (08) 9388 4999

Facsimile: (08) 9388 4877

Web: www.public.health.wa.gov.au

Disclaimer

Every endeavour has been made to ensure that the information provided in this document was accurate at the time of writing. However, infectious disease notification data are continuously updated and subject to change.

Copyright to this material is vested in the State of Western Australia unless otherwise indicated. Apart from any fair dealing for the purposes of private study, research, criticism or review, as permitted under the provisions of the Copyright Act 1968, no part may be reproduced or re-used for any purposes whatsoever without written permission of the State of Western Australia.

PUBLISHED BY

This publication has been produced by the **Department of Health, Western Australia.**

The Epidemiology of Notifiable
Sexually Transmitted Infections
and Blood-Borne Viruses
in Western Australia 2013 -
Appendix

Contents

List of Tables	iii
List of Figures	v
Abbreviations	vi
Terminology used in Tables/Figures	vii

List of Tables

Table 1 Population health regions for notification purposes by postcode, 2013	8
Table 2 Number and age-specific rate of STI notifications by sex, WA, 2013.....	9
Table 3 Number and ASR of chlamydia notifications by region and sex, WA, 2013	10
Table 4 Number, crude rate and ASR of chlamydia notifications by region, WA, 2004 to 2013.....	11
Table 5 Number and ASR of chlamydia notifications by region and Aboriginality, WA, 2013	12
Table 6 Number and ASR of chlamydia notifications by Aboriginality and sex, WA, 2013	13
Table 7 Number and proportion of chlamydia notifications by where infection was acquired and sex, WA, 2013.....	13
Table 8 Number and crude rate of chlamydia notifications by state and territory, Australia, 2013.....	13
Table 9 Number and age-specific rate of chlamydia notifications by sex and Aboriginality, WA, 2013	14
Table 10 Number and age-specific rate of chlamydia notifications by region and Aboriginality, WA, 2013.....	15
Table 11 Number and ASR of gonorrhoea notifications by region and sex, WA, 2013.....	16
Table 12 Number, crude rate and ASR of gonorrhoea notifications by region, WA, 2004 to 2013.....	17
Table 13 Number and ASR of gonorrhoea notifications by region and Aboriginality, WA, 2013.....	18
Table 14 Number and ASR of gonorrhoea notifications by Aboriginality and sex, WA, 2013	19
Table 15 Number and proportion of gonorrhoea notifications by where infection was acquired and sex, WA, 2013.....	19
Table 16 Number and crude rate of gonorrhoea notifications by state and territory, Australia, 2013.....	19
Table 17 Number and age-specific rate of gonorrhoea notifications by sex and Aboriginality, WA, 2013.....	20

Table 18 Number and age-specific rate of gonorrhoea notifications by region and Aboriginality, WA, 2013.....	21
Table 19 Number, crude rate and ASR syphilis notifications by region and sex, WA, 2013	25
Table 20 Number, crude rate and ASR of infectious syphilis notifications by region, WA, 2004 to 2013.....	26
Table 21 Number, crude rate and ASR of non-infectious syphilis notifications by region, WA, 2004 to 2013	27
Table 22 Number, crude rate and ASR of total syphilis notifications by region, WA, 2004 to 2013.....	28
Table 23 Number and age-specific rate of infectious syphilis notifications by sex and Aboriginality, WA, 2013.....	29
Table 24 Number and age-specific rate of non-infectious syphilis notifications by sex and Aboriginality, WA, 2013.....	30
Table 25 Number and age-specific rate of total syphilis notifications by sex and Aboriginality, WA, 2013.....	31
Table 26 Number and age-specific rate of infectious syphilis notifications by region and Aboriginality, WA, 2013.....	32
Table 27 Number and age-specific rate of non-infectious syphilis notifications by region and Aboriginality, WA, 2013.....	33
Table 28 Number and ASR of syphilis notifications by region, disease status and Aboriginality, WA, 2013.....	36
Table 29 Number and ASR of syphilis notifications by Aboriginality, disease status and sex, WA, 2013	37
Table 30 Number and proportion of syphilis notifications by where infection was acquired, disease status and sex, WA, 2013.....	38
Table 31 Number and crude rate of infectious syphilis notifications by state and territory, Australia, 2013.....	38
Table 32 Number and crude rate of non-infectious syphilis notifications by state and territory, Australia, 2013.....	39
Table 33 Number, crude rate and ASR of hepatitis B notifications by region and sex, WA, 2013.....	41
Table 34 Number, crude rate and ASR of newly acquired hepatitis B notifications by region, WA, 2004 to 2013	42
Table 35 Number, crude rate and ASR of unspecified hepatitis B notifications by region, WA, 2004 to 2013	43
Table 36 Number, crude rate and ASR of total hepatitis B notifications by region, WA, 200 to 2013.....	44
Table 37 Number and ASR of hepatitis B notifications by region, disease status and Aboriginality, WA, 2013.....	46
Table 38 Number and ASR of hepatitis B notifications by Aboriginality, disease status and sex, WA, 2013	47

Table 39 Number and proportion of hepatitis B notifications by where infection was acquired, disease status and sex, WA, 2013	48
Table 40 Number and crude rate of newly acquired hepatitis B notifications by state and territory, Australia, 2013.....	48
Table 41 Number and crude rate of unspecified hepatitis B notifications by state and territory, Australia, 2013.....	49
Table 42 Number and ASR of hepatitis C notifications by region and sex, WA, 2013	51
Table 43 Number, crude rate and ASR of newly acquired hepatitis C notifications by region, WA, 2004 to 2013	52
Table 44 Number, crude rate and ASR of unspecified hepatitis C notifications by region, WA, 2004 to 2013	53
Table 45 Number, crude rate and ASR of total hepatitis C notifications by region, WA, 2004 to 2013.....	54
Table 46 Number and ASR of hepatitis C notifications by region, disease status and Aboriginality, WA, 2013.....	56
Table 47 Number and ASR of hepatitis C notifications by Aboriginality, disease status and sex, WA, 2013	57
Table 48 Number and proportion of hepatitis C notifications by where infection was acquired, disease status and sex, WA, 2013	58
Table 49 Number and crude rate of newly acquired hepatitis C notifications by state and territory, Australia, 2013.....	58
Table 50 Number and crude rate of unspecified hepatitis C notifications by state and territory, Australia, 2013.....	59

List of Figures

Figure 1 Number of chlamydia notifications by sex, WA, 2004 to 2013	10
Figure 2 Number of chlamydia notifications by Aboriginality, WA, 2004 to 2013	12
Figure 3 Number of gonorrhoea notifications by sex, WA, 2004 to 2013.....	16
Figure 4 Number of gonorrhoea notifications by Aboriginality, WA, 2004 to 2013.....	18
Figure 5 Number of syphilis notifications by disease status, WA, 2004 to 2013	22
Figure 6 Number of infectious syphilis notifications by sex, WA, 2004 to 2013	23
Figure 7 Number of non-infectious syphilis notifications by sex, WA, 2004 to 2013	24
Figure 8 Number of infectious syphilis notifications by Aboriginality, WA, 2004 to 2013 ...	34
Figure 9 Number of non-infectious syphilis notifications by Aboriginality, WA, 2004 to 2013	35
Figure 10 Number of hepatitis B notifications by disease status, WA, 2004 to 2013	39
Figure 11 Number of newly acquired hepatitis B notifications by sex, WA, 2004 to 2013..	40
Figure 12 Number of unspecified hepatitis B notifications by sex, WA, 2004 to 2013	40

Figure 13 Number of newly acquired hepatitis B notifications by Aboriginality, WA, 2004 to 2013.....	45
Figure 14 Number of unspecified hepatitis B notifications by Aboriginality, WA, 2004 to 2013.....	45
Figure 15 Number of hepatitis C notifications by disease status, WA, 2004 to 2013	49
Figure 16 Number of newly acquired hepatitis C notifications by sex, WA, 2004 to 2013 ..	50
Figure 17 Number of unspecified hepatitis C notifications by sex, WA, 2004 to 2013	50
Figure 18 Number of newly acquired hepatitis C notifications by Aboriginality, WA, 2004 to 2013.....	55
Figure 19 Number of unspecified hepatitis C notifications by Aboriginality, WA, 2004 to 2013.....	55

Abbreviations

ACT	Australian Capital Territory
ASR(s)	Age-standardised notification rate(s) per 100,000 population
AUS (Total)	Australia
DoH	Department of Health Western Australia
NNDSS	National Notifiable Diseases Surveillance System
NSW	New South Wales
NT	Northern Territory
PHU	Public Health Unit
QLD	Queensland
SA	South Australia
TAS	Tasmania
VIC	Victoria
WA	Western Australia

Terminology used in Tables/Figures

Age-specific rate	Notification rate for a specified age group. Both numerator and denominator refer to the same age group. Expressed per 100,000 persons in that age group
Age-standardised rate (ASR)	Notification rate adjusted to take account of differences in age composition when rates for different populations are compared. Expressed per 100,000 population
Crude rate	Calculated by dividing the number of notifications by the population. Not adjusted for age or other factors. Expressed per 100,000 population
Infectious syphilis	Primary syphilis + secondary syphilis + early latent (less than two years duration)
N/A	Not applicable
Non-infectious syphilis	Syphilis infection of more than two years or unknown duration
Notification rate	See crude rate and age-standardised rate
Number	Number of notifications reported to the DoH/state and territory health authorities
Rate ratio (Aboriginal:non-Aboriginal)	Aboriginal to non-Aboriginal rate ratio = $ASR (\text{Aboriginal})/ASR (\text{non-Aboriginal})$
Rate ratio (Male:Female)	Male to female rate ratio = $ASR (\text{male})/ASR (\text{female})$
Total hepatitis B notifications	Newly acquired hepatitis B + unspecified hepatitis B
Total hepatitis C notifications	Newly acquired hepatitis C + unspecified hepatitis C
Total syphilis notifications	Infectious syphilis + non-infectious syphilis

Table 1 Population health regions for notification purposes by postcode, 2013

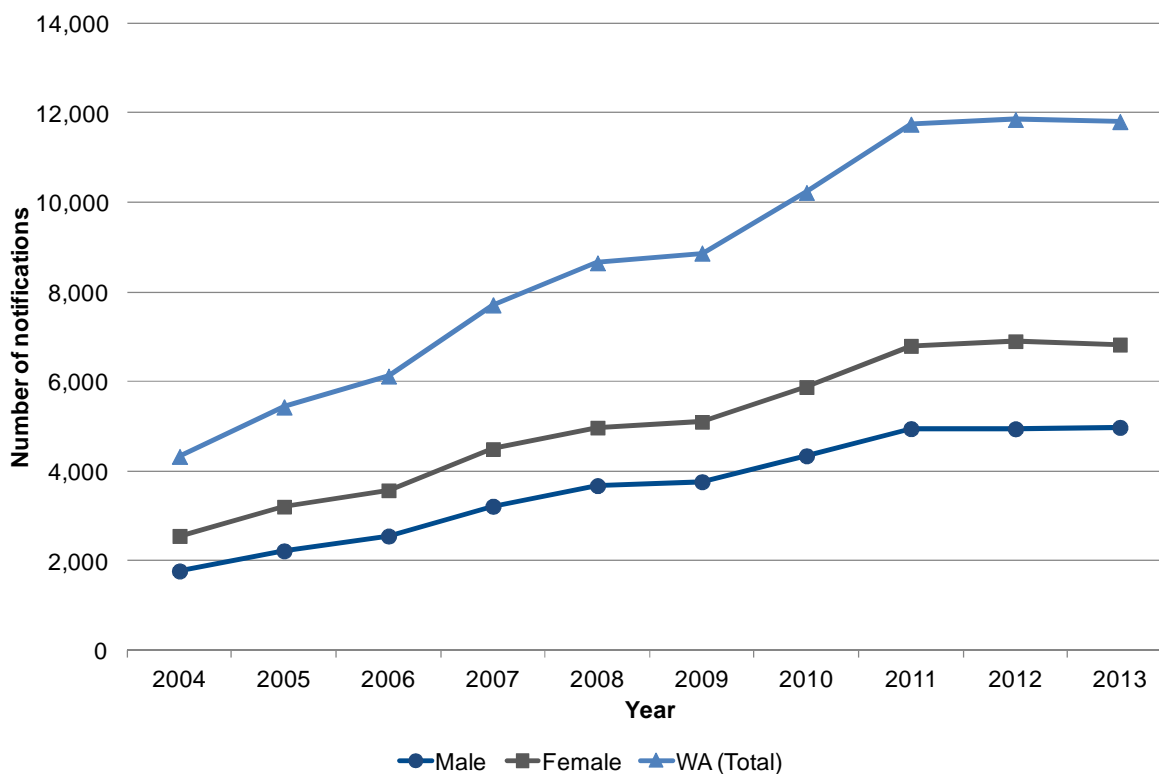
Great Southern	Goldfields	Kimberley	Midwest	North Metropolitan				Pilbara	South Metropolitan			South West	Wheatbelt	
6316		6725	6514	6000	6054	6840	6931	6710	6100	6169	6218	6041	6403	6488
6317	6346	6726	6515	6001	6055	6841	6932	6711	6101	6170	6220	6042	6405	6489
6318	6348	6728	6517	6003	6056	6842	6933	6712	6102	6171	6221	6043	6407	6490
6320	6429	6731	6518	6004	6057	6843	6934	6713	6103	6172	6223	6044	6409	6501
6321	6430	6733	6519	6005	6058	6844	6935	6714	6104	6173	6224	6302	6410	6502
6322	6431	6740	6522	6006	6059	6845	6936	6716	6105	6174	6225	6304	6411	6503
6323	6432	6743	6525	6007	6060	6846	6937	6718	6106	6175	6226	6306	6412	6504
6324	6433	6765	6528	6008	6061	6847	6938	6720	6107	6176	6227	6308	6413	6505
6326	6434	6770	6530	6009	6062	6848	6939	6721	6108	6207	6228	6309	6414	6506
6327	6435	6798	6531	6010	6063	6849	6940	6722	6109	6208	6229	6311	6415	6507
6328	6436	6799	6532	6011	6064	6850	6941	6723	6110	6210	6230	6312	6417	6509
6330	6437		6535	6012	6065	6865	6942	6751	6111	6213	6231	6313	6418	6510
6331	6438		6536	6014	6066	6872	6943	6753	6112	6214	6232	6315	6419	6511
6332	6440		6537	6015	6067	6892	6944	6754	6121	6215	6233	6350	6420	6512
6333	6442		6614	6016	6068	6900	6945	6758	6122	6953	6236	6351	6421	6513
6335	6443		6616	6017	6069	6901	6946	6760	6123	6954	6237	6352	6422	6516
6336	6444		6620	6018	6070	6902	6947	6761	6124	6955	6239	6353	6423	6521
6337	6445		6623	6019	6071	6903	6951	6762	6125	6956	6240	6355	6424	6560
6338	6446		6625	6020	6072	6904	6952		6126	6957	6243	6356	6425	6562
6341	6447		6627	6021	6073	6905	6979		6147	6958	6244	6357	6426	6564
6343	6448		6628	6022	6074	6906	6980		6148	6959	6251	6358	6427	6566
6373	6450		6630	6023	6076	6907	6981		6149	6960	6252	6359	6428	6567
6394	6452		6631	6024	6081	6909	6982		6150	6961	6253	6361	6460	6568
6395	6646		6632	6025	6082	6910	6983		6151	6963	6254	6363	6461	6569
6396			6635	6026	6083	6911	6984		6152	6964	6255	6365	6462	6571
6397			6638	6027	6084	6912	6985		6153	6965	6256	6367	6463	6572
			6639	6028	6090	6913	6986		6154	6966	6258	6368	6465	6574
			6640	6029	6556	6914	6987		6155	6967	6260	6369	6466	6575
			6642	6030	6558	6915	6997		6156	6968	6262	6370	6467	6603
			6701	6031	6800	6916			6157	6969	6271	6372	6468	6605
			6705	6032	6803	6917			6158	6970	6275	6375	6470	6606
			6707	6033	6809	6918			6159	6971	6280	6380	6472	6608
				6034	6817	6919			6160	6988	6281	6383	6473	6609
				6035	6820	6920			6161	6989	6282	6384	6475	6612
				6036	6827	6921			6162	6990	6284	6385	6476	6613
				6037	6830	6922			6163	6991	6285	6386	6477	
				6038	6831	6923			6164	6992	6286	6390	6479	
				6050	6832	6924			6165		6288	6391	6480	
				6051	6837	6925			6166		6290	6392	6484	
				6052	6838	6926			6167		6398	6393	6485	
				6053	6839	6929			6168			6401	6487	

Table 2 Number and age-specific rate of STI notifications by sex, WA, 2013

Age group (years)	Sex	Infection									
		Chlamydia		Gonorrhoea		Infectious syphilis		Non-infectious syphilis		Total syphilis	
		Number	Rate	Number	Rate	Number	Rate	Number	Rate	Number	Rate
0–9	Male	0	0.0	0	0.0	0	0.0	0	0.0	0	0.0
	Female	0	0.0	1	0.6	0	0.0	0	0.0	0	0.0
	Total	0	0.0	1	0.3	0	0.0	0	0.0	0	0.0
10–14	Male	21	27.3	13	16.9	0	0.0	0	0.0	0	0.0
	Female	133	178.8	60	80.7	0	0.0	0	0.0	0	0.0
	Total	154	101.8	73	48.3	0	0.0	0	0.0	0	0.0
15–19	Male	825	1,010.7	257	314.8	1	1.2	1	1.2	2	2.5
	Female	2,129	2,742.5	263	338.8	1	1.3	0	0.0	1	1.3
	Total	2,954	1,854.8	520	326.5	2	1.3	1	0.6	3	1.9
20–24	Male	1,671	1,686.9	303	305.9	9	9.1	9	9.1	18	18.2
	Female	2,533	2,775.0	196	214.7	2	2.2	2	2.2	4	4.4
	Total	4,204	2,208.7	499	262.2	11	5.8	11	5.8	22	11.6
25–29	Male	1,230	1,138.3	226	209.1	11	10.2	10	9.3	21	19.4
	Female	1,108	1,140.0	101	103.9	1	1.0	3	3.1	4	4.1
	Total	2,338	1,139.1	327	159.3	12	5.8	13	6.3	25	12.2
30–34	Male	511	567.3	146	162.1	10	11.1	6	6.7	16	17.8
	Female	480	557.4	62	72.0	4	4.6	4	4.6	8	9.3
	Total	991	562.5	208	118.1	14	7.9	10	5.7	24	13.6
35–39	Male	259	297.1	91	104.4	8	9.2	5	5.7	13	14.9
	Female	231	269.7	33	38.5	3	3.5	2	2.3	5	5.8
	Total	490	283.5	124	71.7	11	6.4	7	4.1	18	10.4
40–44	Male	178	195.5	65	71.4	8	8.8	9	9.9	17	18.7
	Female	116	130.8	22	24.8	1	1.1	1	1.1	2	2.3
	Total	294	163.6	87	48.4	9	5.0	10	5.6	19	10.6
45–49	Male	122	139.5	41	46.9	6	6.9	5	5.7	11	12.6
	Female	49	57.3	16	18.7	2	2.3	3	3.5	5	5.8
	Total	171	98.8	57	32.9	8	4.6	8	4.6	16	9.2
50+	Male	162	44.5	59	16.2	18	4.9	19	5.2	37	10.2
	Female	49	12.7	12	3.1	1	0.3	4	1.0	5	1.3
	Total	211	28.1	71	9.5	19	2.5	23	3.1	42	5.6
WA (Total)	Male	4,979	371.1	1,201	92.4	71	5.5	64	5.0	135	10.5
	Female	6,828	552.8	766	63.7	15	1.3	19	1.5	34	2.8
	Total	11,807	458.8	1,967	78.4	86	3.4	83	3.3	169	6.7

Notes: Number = Number of notifications reported to the DoH
Rate (Age group) = Age-specific rate
Rate (WA Total) = Age-standardised notification rate per 100,000 population
Infectious syphilis = Primary syphilis + Secondary syphilis + Early latent syphilis (less than two years duration)
Non-infectious syphilis = More than two years or unknown duration
Total syphilis = Infectious syphilis + Non-infectious syphilis
Notifications from Christmas Island, Curtin, Leonora, Perth and Yongah Hill Immigration Detention Centres have been excluded

Figure 1 Number of chlamydia notifications by sex, WA, 2004 to 2013



Notes: Notifications from Christmas Island, Curtin, Leonora, Perth and Yongah Hill Immigration Detention Centres have been excluded

Table 3 Number and ASR of chlamydia notifications by region and sex, WA, 2013

Region	Sex						Rate ratio (Male:Female)
	Male		Female		Total		
	Number	ASR	Number	ASR	Number	ASR	
Goldfields	159	460.4	250	835.9	409	640.2	0.6
Great Southern	72	284.8	113	472.1	185	374.5	0.6
Kimberley	240	1,083.8	426	2,222.3	666	1,624.7	0.5
Midwest	119	380.2	261	872.1	380	621.7	0.4
North Metropolitan	2,080	370.4	2,484	471.5	4,564	419.6	0.8
Pilbara	180	391.4	246	880.2	426	601.7	0.4
South Metropolitan	1,781	349.0	2,543	530.4	4,324	436.8	0.7
South West	196	262.8	351	496.7	547	375.3	0.5
Wheatbelt	64	211.2	120	444.6	184	320.1	0.5
WA (Total)	4,979	370.7	6,828	553.0	11,807	458.8	0.7

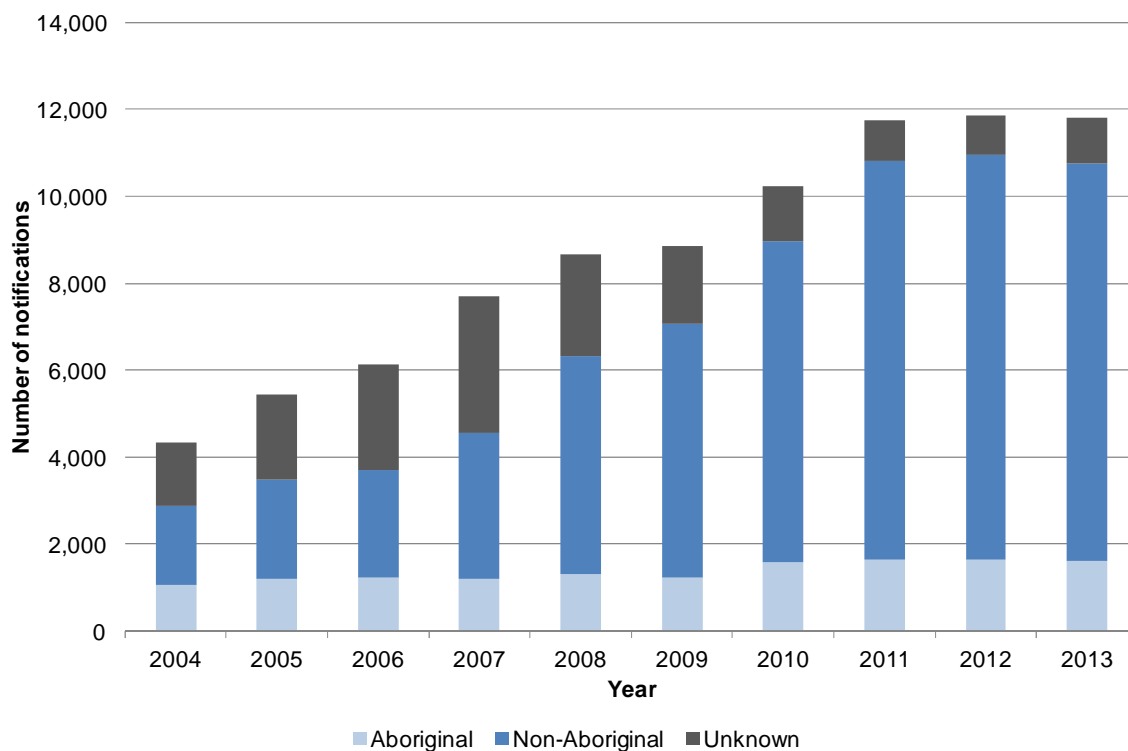
Notes: Number = Number of notifications reported to the DoH
 ASR = Age-standardised notification rate per 100,000 population
 Rate ratio (Male:Female) = ASR (Male)/ASR (Female)
 Column totals include cases with interstate, overseas or unknown addresses, which are not shown in the table
 Notifications from Christmas Island, Curtin, Leonora, Perth and Yongah Hill Immigration Detention Centres have been excluded

Table 4 Number, crude rate and ASR of chlamydia notifications by region, WA, 2004 to 2013

Region	Rate	Year									
		2004	2005	2006	2007	2008	2009	2010	2011	2012	2013
Goldfields	Number	261	248	339	397	368	387	411	437	413	409
	Crude	488.3	465.5	634.8	731.0	662.2	687.1	724.6	762.7	710.1	697.4
	ASR	453.3	437.3	599.0	687.7	616.3	628.5	661.4	712.3	650.6	640.2
Great Southern	Number	62	113	121	158	163	154	145	208	210	185
	Crude	110.4	198.5	209.2	269.8	271.9	251.4	234.8	352.1	344.5	305.6
	ASR	130.8	239.3	251.0	328.3	330.4	305.8	281.5	436.2	419.0	374.5
Kimberley	Number	490	565	525	497	597	568	653	632	703	666
	Crude	1,532.4	1,773.0	1,642.7	1,498.9	1,746.4	1,622.4	1,828.8	1,677.6	1,835.9	1,689.5
	ASR	1,357.9	1,578.9	1,476.4	1,375.0	1,625.8	1,519.2	1,730.3	1,545.9	1,768.0	1,624.7
Midwest	Number	161	234	211	293	341	336	363	464	387	380
	Crude	267.3	384.7	343.5	472.5	537.8	518.1	553.4	711.3	579.4	564.6
	ASR	295.9	420.3	385.8	527.0	596.5	571.6	605.0	788.6	635.0	621.7
North Metropolitan	Number	1,440	1,810	2,171	2,806	3,145	3,358	3,792	4,306	4,581	4,564
	Crude	175.8	216.1	254.9	321.9	350.2	361.6	400.1	444.3	459.8	447.8
	ASR	168.9	206.4	243.6	307.5	334.0	338.9	376.1	419.1	430.0	419.6
Pilbara	Number	228	279	318	317	372	306	408	381	417	426
	Crude	543.1	652.5	721.1	704.0	809.0	643.8	839.3	607.3	679.5	635.6
	ASR	513.1	614.2	693.8	667.3	783.1	629.4	821.8	568.1	644.7	601.7
South Metropolitan	Number	1,325	1,725	2,002	2,572	2,997	3,078	3,684	4,418	4,287	4,324
	Crude	185.9	237.2	269.5	338.0	380.8	376.7	439.6	509.4	479.9	470.3
	ASR	178.7	227.3	257.9	322.9	362.3	351.9	412.3	479.8	446.6	436.8
South West	Number	169	249	258	445	450	439	507	590	538	547
	Crude	124.6	179.1	180.4	303.1	295.9	278.2	312.6	372.0	324.9	326.4
	ASR	140.9	204.1	207.5	349.3	333.9	306.0	344.7	434.5	369.3	375.3
Wheatbelt	Number	89	98	96	136	141	163	162	200	206	184
	Crude	121.3	133.1	130.5	183.8	187.9	213.1	209.8	266.3	267.9	239.5
	ASR	154.5	175.6	177.2	250.8	245.9	279.2	276.6	356.3	353.6	320.1
WA (Total)	Number	4,331	5,435	6,127	7,714	8,652	8,871	10,223	11,749	11,852	11,807
	Crude	218.2	268.7	297.4	366.2	398.5	395.1	445.7	499.5	490.2	476.8
	ASR	214.8	264.0	292.4	360.1	390.5	380.8	431.0	484.9	471.4	458.8

Notes: Number = Number of notifications reported to the DoH
 Crude = Crude notification rate per 100,000 population
 ASR = Age-standardised notification rate per 100,000 population
 Column totals include cases with interstate, overseas or unknown addresses, which are not shown in the table
 Notifications from Christmas Island, Curtin, Leonora, Perth and Yongah Hill Immigration Detention Centres have been excluded

Figure 2 Number of chlamydia notifications by Aboriginality, WA, 2004 to 2013



Notes: Notifications from Christmas Island, Curtin, Leonora, Perth and Yongah Hill Immigration Detention Centres have been excluded

Table 5 Number and ASR of chlamydia notifications by region and Aboriginality, WA, 2013

Region	Aboriginality						Total		Rate ratio (Aboriginal: non-Aboriginal)
	Aboriginal		non-Aboriginal		Unknown		Number	ASR	
	Number	ASR	Number	ASR	Number	% Total			
Goldfields	140	1,784.9	267	468.6	2	0.5%	409	640.2	3.8
Great Southern	23	649.2	140	304.8	22	11.9%	185	374.5	2.1
Kimberley	542	2,565.8	118	502.2	6	0.9%	666	1,624.7	5.1
Midwest	165	1,543.1	204	398.6	11	2.9%	380	621.7	3.9
North Metropolitan	198	1,020.9	4,093	382.4	273	6.0%	4,564	419.6	2.7
Pilbara	195	1,846.5	202	309.8	29	6.8%	426	601.7	6.0
South Metropolitan	279	1,170.4	3,621	373.0	424	9.8%	4,324	436.8	3.1
South West	25	484.0	258	183.0	264	48.3%	547	375.3	2.6
Wheatbelt	29	526.5	151	292.4	4	2.2%	184	320.1	1.8
WA (Total)	1,598	1,486.3	9,148	367.8	1,061	9.0%	11,807	458.8	4.0

Notes: Number = Number of notifications reported to the DoH
 ASR = Age-standardised notification rate per 100,000 population
 % (Total) = Number (Unknown)/Total number (Region)
 Rate ratio (Aboriginal:non-Aboriginal) = ASR (Aboriginal)/ASR (non-Aboriginal)
 Calculations by Aboriginality are based on notifications of known Aboriginal status only (i.e. notifications of unknown Aboriginal status are excluded)
 Column totals include cases with interstate, overseas or unknown addresses, which are not shown in the table
 Notifications from Christmas Island, Curtin, Leonora, Perth and Yongah Hill Immigration Detention Centres have been excluded

Table 6 Number and ASR of chlamydia notifications by Aboriginality and sex, WA, 2013

Aboriginality	Sex				Total		Rate ratio (Male:Female)
	Male		Female		Number	ASR	
	Number	ASR	Number	ASR			
Aboriginal	573	1,061.9	1,025	1,940.9	1,598	1,486.3	0.5
non-Aboriginal	3,944	302.9	5,204	437.2	9,148	367.8	0.7
WA (Total)	4,979	370.7	6,828	553.0	11,807	458.8	0.7
Rate ratio (Aboriginal:non-Aboriginal)	N/A	3.5	N/A	4.4	N/A	4.0	0.8

Notes: Number = Number of notifications reported to the DoH
 ASR = Age-standardised notification rate per 100,000 population
 Rate ratio (Male:Female) = ASR (Male)/ASR (Female)
 Rate ratio (Aboriginal:non-Aboriginal) = Aboriginal to non-Aboriginal rate ratio = ASR (Aboriginal)/ASR (non-Aboriginal)
 N/A = Not applicable
 Calculations by Aboriginality are based on notifications of known Aboriginal status only (i.e. notifications of unknown Aboriginal status are excluded)
 Notifications from Christmas Island, Curtin, Leonora, Perth and Yongah Hill Immigration Detention Centres have been excluded

Table 7 Number and proportion of chlamydia notifications by where infection was acquired and sex, WA, 2013

Where infection acquired	Sex				WA (Total)	
	Male		Female		Number	% Total
	Number	% Total	Number	% Total		
WA	3,012	60.5%	4,675	68.5%	7,687	65.1%
Interstate	72	1.4%	61	0.9%	133	1.1%
Overseas	366	7.4%	117	1.7%	483	4.1%
Unknown	1,529	30.7%	1,975	28.9%	3,504	29.7%
Total	4,979	100.0%	6,828	100.0%	11,807	100.0%

Notes: Number = Number of notifications reported to the DoH
 % Total = Number of notifications (Where infection acquired)/Total number of notifications (Sex) or overall
 Notifications from Christmas Island, Curtin, Leonora, Perth and Yongah Hill Immigration Detention Centres have been excluded

Table 8 Number and crude rate of chlamydia notifications by state and territory, Australia, 2013

Notifications	State/Territory								AUS (Total)
	ACT	NSW	NT	QLD	SA	TAS	VIC	WA	
Number	1,269	20,822	3,040	19,472	5,184	1,539	19,339	11,742	82,407
Crude rate	338.5	285.2	1,292.6	426.5	313.0	300.4	343.6	482.7	362.9

Notes: Number = Number of notifications reported to state and territory health authorities
 Crude rate = Crude rate per 100,000 population
 Data sourced from NNDSS, extracted 5 May 2014; data are provisional and subject to future revision

Table 9 Number and age-specific rate of chlamydia notifications by sex and Aboriginality, WA, 2013

Age group (Years)	Sex	Aboriginality						Total		Rate ratio (Aboriginal: non-Aboriginal)
		Aboriginal		non-Aboriginal		Unknown		Number	Rate	
		Number	Rate	Number	Rate	Number	% Total			
0-9	Male	0	0.0	0	0.0	0	N/A	0	0.0	N/A
	Female	0	0.0	0	0.0	0	N/A	0	0.0	N/A
	Total	0	0.0	0	0.0	0	N/A	0	0.0	N/A
10-14	Male	16	347.9	4	5.5	1	4.8%	21	27.3	63.3
	Female	96	2,241.9	35	49.9	2	1.5%	133	178.8	44.9
	Total	112	1,261.1	39	27.4	3	1.9%	154	101.8	46.0
15-19	Male	248	5,580.6	516	668.7	61	7.4%	825	1,010.7	8.3
	Female	451	11,045.8	1,502	2,041.8	176	8.3%	2,129	2,742.5	5.4
	Total	699	8,197.5	2,018	1,338.9	237	8.0%	2,954	1,854.8	6.1
20-24	Male	157	3,967.7	1,355	1,424.8	159	9.5%	1,671	1,686.9	2.8
	Female	277	7,380.8	2,026	2,314.8	230	9.1%	2,533	2,775.0	3.2
	Total	434	5,629.1	3,381	1,851.4	389	9.3%	4,204	2,208.7	3.0
25-29	Male	83	2,550.7	1,026	979.2	121	9.8%	1,230	1,138.3	2.6
	Female	114	3,581.5	882	938.1	112	10.1%	1,108	1,140.0	3.8
	Total	197	3,060.4	1,908	959.7	233	10.0%	2,338	1,139.1	3.2
30-34	Male	40	1,420.0	417	478.0	54	10.6%	511	567.3	3.0
	Female	55	2,111.3	387	463.4	38	7.9%	480	557.4	4.6
	Total	95	1,752.1	804	470.9	92	9.3%	991	562.5	3.7
35-39	Male	14	535.0	231	273.2	14	5.4%	259	297.1	2.0
	Female	19	759.4	190	228.4	22	9.5%	231	269.7	3.3
	Total	33	644.7	421	251.0	36	7.3%	490	283.5	2.6
40-44	Male	11	458.9	143	161.3	24	13.5%	178	195.5	2.8
	Female	8	327.5	104	120.6	4	3.4%	116	130.8	2.7
	Total	19	392.6	247	141.2	28	9.5%	294	163.6	2.8
45-49	Male	3	149.0	107	125.2	12	9.8%	122	139.5	1.2
	Female	3	141.0	41	49.1	5	10.2%	49	57.3	2.9
	Total	6	144.9	148	87.6	17	9.9%	171	98.8	1.7
50+	Male	1	19.8	145	40.4	16	9.9%	162	44.5	0.5
	Female	2	35.6	37	9.7	10	20.4%	49	12.7	3.7
	Total	3	28.2	182	24.6	26	12.3%	211	28.1	1.1
WA (Total)	Male	573	1,063.7	3,944	303.3	462	9.3%	4,979	371.1	3.5
	Female	1,025	1,943.6	5,204	437.0	599	8.8%	6,828	552.8	4.4
	Total	1,598	1,488.6	9,148	367.8	1,061	9.0%	11,807	458.8	4.0

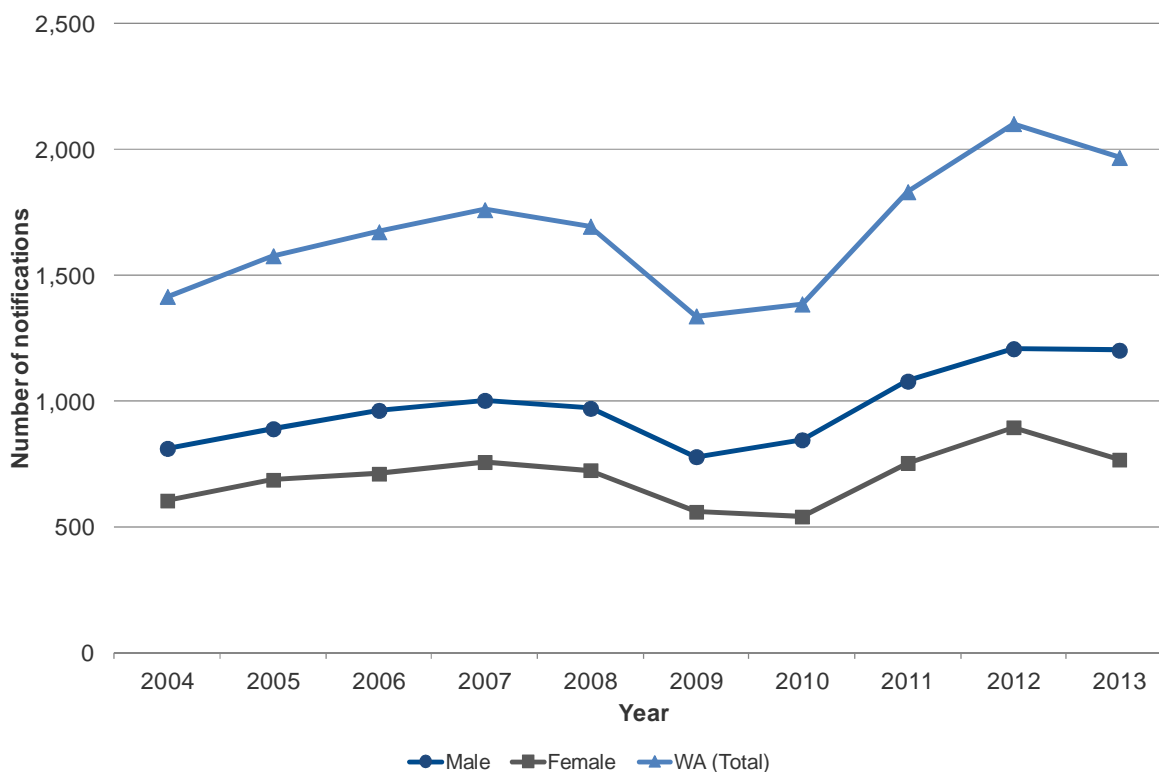
Notes: Number = Number of notifications reported to the DoH
Rate (Age group) = Age-specific rate
Rate (WA Total) = Age-standardised notification rate per 100,000 population
% (Total) = Number (Unknown)/Total number (Age group)
Rate ratio (Aboriginal:non-Aboriginal) = Aboriginal to non-Aboriginal rate ratio = Aboriginal rate (Age group)/non-Aboriginal rate (Age group)
Calculations by Aboriginality are based on notifications of known Aboriginal status only (i.e. notifications of unknown Aboriginal status are excluded)
Notifications from Christmas Island, Curtin, Leonora, Perth and Yongah Hill Immigration Detention Centres have been excluded

Table 10 Number and age-specific rate of chlamydia notifications by region and Aboriginality, WA, 2013

Region	Aboriginality	Rate	Age group (Years)											Total
			0-9	10-14	15-19	20-24	25-29	30-34	35-39	40-44	45-49	50+	Unknown	
Goldfields	Aboriginal	Number	0	5	59	40	15	13	5	2	1	0	0	140
		Rate	0.0	802.6	9,983.1	6,483.0	2,814.3	3,087.9	1,272.3	540.5	316.5	0.0	N/A	1,784.9
	non-Aboriginal	Number	0	1	67	91	63	20	9	12	3	1	0	267
		Rate	0.0	29.8	2,030.9	2,192.2	1,280.0	501.3	222.3	305.4	72.5	7.6	N/A	468.9
	Total	Number	0	6	126	132	79	33	14	14	4	1	0	409
		Rate	0.0	150.6	3,237.4	2,766.7	1,448.2	747.8	315.1	325.4	89.7	7.1	N/A	640.2
Great Southern	Aboriginal	Number	0	1	16	5	0	0	1	0	0	0	23	
		Rate	0.0	342.5	5,970.1	2,283.1	0.0	0.0	729.9	0.0	0.0	0.0	N/A	649.2
	non-Aboriginal	Number	0	1	58	43	23	7	3	1	0	4	0	140
		Rate	0.0	25.4	1,751.7	1,420.1	764.6	212.8	88.4	25.0	0.0	17.6	N/A	304.4
	Total	Number	0	2	81	59	25	7	4	2	1	4	0	185
		Rate	0.0	47.3	2,261.3	1,817.6	784.4	203.9	113.3	48.0	23.3	17.4	N/A	374.5
Kimberley	Aboriginal	Number	0	42	229	144	75	29	12	9	2	0	0	542
		Rate	0.0	2,181.8	15,195.8	9,924.2	4,873.3	2,222.2	1,073.3	908.2	231.7	0.0	N/A	2,565.8
	non-Aboriginal	Number	0	2	16	41	26	21	4	2	4	2	0	118
		Rate	0.0	212.1	2,136.2	2,197.2	1,006.6	956.3	197.0	100.7	229.9	36.1	N/A	505.5
	Total	Number	0	44	247	187	102	51	16	11	6	2	0	666
		Rate	0.0	1,533.1	10,938.9	5,634.2	2,473.9	1,455.5	508.1	369.1	230.3	25.1	N/A	1,626.9
Midwest	Aboriginal	Number	0	17	88	36	13	7	3	1	0	0	165	
		Rate	0.0	1,878.5	10,244.5	5,438.1	2,329.7	1,315.8	630.3	220.3	0.0	0.0	N/A	1,543.1
	non-Aboriginal	Number	0	1	57	88	31	12	7	3	0	5	0	204
		Rate	0.0	25.8	1,701.5	2,554.4	783.0	332.0	170.4	67.7	0.0	24.0	N/A	398.7
	Total	Number	0	18	149	125	47	21	11	4	0	5	0	380
		Rate	0.0	376.5	3,539.2	3,042.1	1,040.1	506.1	239.8	81.9	0.0	22.8	N/A	621.8
North Metro	Aboriginal	Number	0	8	71	63	33	17	4	2	0	0	198	
		Rate	0.0	541	4,473.9	4,172.2	2,827.8	1,800.8	432.4	226.2	0.0	0.0	N/A	1,020.9
	non-Aboriginal	Number	0	13	757	1,482	930	395	220	121	81	94	0	4,093
		Rate	0.0	22	1,165.6	1,891.2	1,082.3	544.8	309.8	162.7	113.8	31.0	N/A	382.3
	Total	Number	0	22	879	1,642	1,029	443	235	128	85	101	0	4,564
		Rate	0.0	35.9	1,321.2	2,055.8	1,181.5	603.1	326.8	170.0	118.1	33.1	N/A	419.5
Pilbara	Aboriginal	Number	0	17	71	52	30	14	4	4	1	2	0	195
		Rate	0.0	2,000.0	8,503.0	6,590.6	4,672.9	2,389.1	649.4	687.3	217.9	166.7	N/A	1,858.6
	non-Aboriginal	Number	0	0	36	81	52	16	7	6	1	3	0	202
		Rate	0.0	0.0	1,640.1	1,601.7	645.0	248.0	110.6	107.7	20.6	28.7	N/A	313.6
	Total	Number	0	17	108	148	88	34	11	12	2	6	0	426
		Rate	0.0	505.7	3,563.2	2,531.2	1,010.9	483.1	158.4	195.0	37.6	51.4	N/A	607.5
South Metro	Aboriginal	Number	0	20	136	78	25	12	4	1	2	1	0	279
		Rate	0.0	1,128.7	7,327.6	4,441.9	1,831.5	1,135.3	397.2	105.5	244.5	49.1	N/A	1,175.5
	non-Aboriginal	Number	0	17	878	1,386	692	293	150	86	52	67	0	3,621
		Rate	0.0	32.5	1,481.4	1,863.5	912.1	453.3	244.1	135.8	84.9	24.1	N/A	372.8
	Total	Number	0	39	1,104	1,602	824	344	165	101	62	83	0	4,324
		Rate	0.0	72.1	1,806.0	2,104.1	1,066.7	523.5	264.2	157.1	99.9	29.7	N/A	436.7
South West	Aboriginal	Number	0	0	12	9	2	2	0	0	0	0	25	
		Rate	0.0	0.0	2,526.3	2,593.7	836.8	970.9	0.0	0.0	0.0	0.0	N/A	484.0
	non-Aboriginal	Number	0	4	82	95	37	17	12	4	4	3	0	258
		Rate	0.0	35.9	811.9	1,050.8	361.8	165.5	109.6	33.0	34.2	5.3	N/A	183.2
	Total	Number	0	4	175	213	80	28	25	10	6	6	0	547
		Rate	0.0	34.5	1,654.5	2,268.6	764.5	267.1	224.2	81.1	50.5	10.5	N/A	375.5
Wheatbelt	Aboriginal	Number	0	2	16	6	4	1	0	0	0	0	29	
		Rate	0.0	361.0	2,974.0	1,729.1	1,970.4	467.3	0.0	0.0	0.0	0.0	N/A	526.5
	non-Aboriginal	Number	0	0	65	44	23	9	5	4	0	1	0	151
		Rate	0.0	0.0	1,858.2	1,340.6	541.8	238.9	113.8	78.3	0.0	3.4	N/A	292.4
	Total	Number	0	2	82	52	27	11	5	4	0	1	0	184
		Rate	0.0	39.9	2,029.7	1,431.7	606.7	276.2	108.2	74.9	0.0	3.3	N/A	320.1
WA (Total)	Aboriginal	Number	0	112	699	434	197	95	33	19	6	3	0	1,598
		Rate	0.0	1,261.1	8,197.5	5,629.1	3,060.4	1,752.1	644.7	392.6	144.9	28.2	N/A	1,488.6
	non-Aboriginal	Number	0	39	2,018	3,381	1,908	804	421	247	148	182	0	9,148
		Rate	0.0	27.4	1,338.9	1,851.4	959.7	470.9	251.0	141.2	87.6	24.6	N/A	367.8
	Total	Number	0	154	2,954	4,204	2,338	991	490	294	171	211	0	11,807
		Rate	0.0	101.8	1,854.8	2,208.7	1,139.1	562.5	283.5	163.6	98.8	28.1	N/A	458.8

Notes: Number = Number of notifications reported to the DoH
Rate (Age group) = Age-specific rate
Rate (WA Total) = Age-standardised notification rate per 100,000 population
N/A = Not applicable
Calculations by Aboriginality are based on notifications of known Aboriginal status only (i.e. notifications of unknown Aboriginal status are excluded)
Column totals include cases with interstate, overseas or unknown addresses, which are not shown in the table
Notifications from Christmas Island, Curtin, Leonora, Perth and Yongah Hill Immigration Detention Centres have been excluded

Figure 3 Number of gonorrhoea notifications by sex, WA, 2004 to 2013



Notes: Notifications from Christmas Island, Curtin, Leonora, Perth and Yongah Hill Immigration Detention Centres have been excluded

Table 11 Number and ASR of gonorrhoea notifications by region and sex, WA, 2013

Region	Sex						Rate ratio (Male:Female)
	Male		Female		Total		
	Number	ASR	Number	ASR	Number	ASR	
Goldfields	71	214.5	77	261.3	148	238.0	0.8
Great Southern	10	38.2	11	44.7	21	41.0	0.9
Kimberley	249	1,127.2	278	1,472.8	527	1,296.6	0.8
Midwest	32	98.3	44	145.1	76	122.3	0.7
North Metropolitan	357	66.1	126	24.5	483	45.6	2.7
Pilbara	122	336.8	89	324.0	211	335.5	1.0
South Metropolitan	315	63.8	123	26.4	438	45.5	2.4
South West	13	16.8	7	9.9	20	13.3	1.7
Wheatbelt	14	41.3	6	20.5	20	31.3	2.0
WA (Total)	1,201	92.2	766	63.8	1,967	78.4	1.4

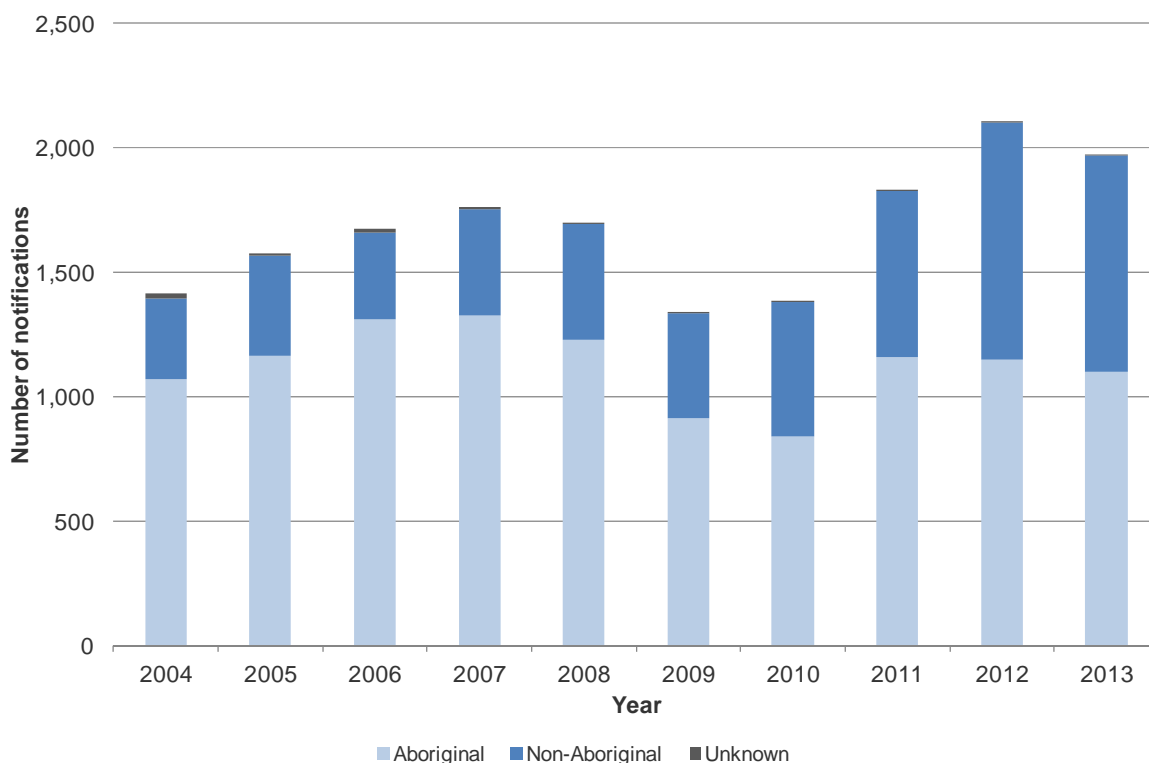
Notes: Number = Number of notifications reported to the DoH
 ASR = Age-standardised notification rate per 100,000 population
 Rate ratio (Male:Female) = ASR (Male)/ASR (Female)
 Column totals include cases with interstate, overseas or unknown addresses, which are not shown in the table
 Notifications from Christmas Island, Curtin, Leonora, Perth and Yongah Hill Immigration Detention Centres have been excluded

Table 12 Number, crude rate and ASR of gonorrhoea notifications by region, WA, 2004 to 2013

Region	Rate	Year									
		2004	2005	2006	2007	2008	2009	2010	2011	2012	2013
Goldfields	Number	125	165	206	169	194	164	161	161	114	148
	Crude	233.9	309.7	385.8	311.2	349.1	291.2	283.8	281.0	196.0	252.4
	ASR	217.7	291.8	361.2	290.5	326.4	265.3	261.9	260.9	180.3	238.0
Great Southern	Number	5	10	11	14	14	2	4	13	11	21
	Crude	8.9	17.6	19.0	23.9	23.4	3.3	6.5	22.0	18.0	34.7
	ASR	11.1	20.2	21.3	29.4	28.3	3.6	7.3	25.8	20.3	41.0
Kimberley	Number	513	611	568	623	625	463	357	592	657	527
	Crude	1,604.3	1,917.3	1,777.3	1,878.9	1,828.3	1,322.5	999.8	1,571.4	1,715.8	1,336.9
	ASR	1,412.1	1,726.3	1,602.1	1,726.4	1,702.9	1,241.5	950.4	1,456.1	1,682.1	1,296.6
Midwest	Number	83	59	48	107	101	32	40	103	95	76
	Crude	137.8	97.0	78.1	172.5	159.3	49.3	61.0	157.9	142.2	112.9
	ASR	148.5	107.4	84.8	189.1	174.9	53.4	66.0	174.2	154.3	122.3
North Metropolitan	Number	217	250	227	238	227	236	313	338	547	483
	Crude	26.5	30.0	26.7	27.3	25.3	25.4	33.0	34.9	54.9	47.4
	ASR	25.8	29.1	26.0	26.5	24.5	24.4	31.8	33.3	52.4	45.6
Pilbara	Number	236	204	364	303	245	191	262	227	190	211
	Crude	562.2	477.1	825.5	672.9	532.8	401.9	539.0	361.8	309.6	314.8
	ASR	541.2	449.0	790.2	634.4	533.0	398.5	524.6	353.2	310.7	335.5
South Metropolitan	Number	201	238	218	246	237	191	207	341	417	438
	Crude	28.2	32.8	29.4	32.3	30.1	23.4	24.7	39.3	46.7	47.6
	ASR	27.6	31.7	28.6	31.3	29.5	22.6	24.1	38.2	44.6	45.5
South West	Number	9	15	15	16	20	27	17	19	21	20
	Crude	6.7	10.8	10.5	10.9	13.2	17.1	10.5	12.0	12.7	11.9
	ASR	7.6	11.7	11.7	12.7	14.4	18.4	11.2	13.6	14.6	13.3
Wheatbelt	Number	20	12	7	22	18	12	7	11	25	20
	Crude	27.3	16.3	9.5	29.7	24.0	15.7	9.1	14.6	32.5	26.0
	ASR	33.7	20.8	12.6	38.6	31.3	20.2	12.0	18.6	41.0	31.3
WA (Total)	Number	1,415	1,576	1,672	1,759	1,694	1,337	1,385	1,831	2,102	1,967
	Crude	71.4	78.1	81.2	83.5	78.0	59.6	60.4	77.8	86.9	79.4
	ASR	70.5	77.3	80.8	82.9	77.5	58.3	59.5	76.7	85.4	78.4

Notes: Number = Number of notifications reported to the DoH
 Crude = Crude notification rate per 100,000 population
 ASR = Age-standardised notification rate per 100,000 population
 Column totals include cases with interstate, overseas or unknown addresses, which are not shown in the table
 Notifications from Christmas Island, Curtin, Leonora, Perth and Yongah Hill Immigration Detention Centres have been excluded

Figure 4 Number of gonorrhoea notifications by Aboriginality, WA, 2004 to 2013



Notes: Notifications from Christmas Island, Curtin, Leonora, Perth and Yongah Hill Immigration Detention Centres have been excluded

Table 13 Number and ASR of gonorrhoea notifications by region and Aboriginality, WA, 2013

Region	Aboriginality						Total		Rate ratio (Aboriginal: non-Aboriginal)
	Aboriginal		non-Aboriginal		Unknown		Number	ASR	
	Number	ASR	Number	ASR	Number	% Total			
Goldfields	141	1,846.8	7	13.4	0	0.0%	148	238.0	137.8
Great Southern	10	302.2	10	20.6	1	4.8%	21	41.0	14.7
Kimberley	508	2,469.6	19	78.0	0	0.0%	527	1,296.6	31.7
Midwest	60	591.4	16	28.9	0	0.0%	76	122.3	20.5
North Metropolitan	65	349.3	418	40.1	0	0.0%	483	45.6	8.7
Pilbara	191	1,891.4	20	59.4	0	0.0%	211	335.5	31.8
South Metropolitan	114	518.9	323	34.1	1	0.2%	438	45.5	15.2
South West	4	80.7	16	10.9	0	0.0%	20	13.3	7.4
Wheatbelt	5	139.0	15	24.7	0	0.0%	20	31.3	5.6
WA (Total)	1,100	1,081.7	865	35.2	2	0.1%	1,967	78.4	30.7

Notes: Number = Number of notifications reported to the DoH
 ASR = Age-standardised notification rate per 100,000 population
 % (Total) = Number (Unknown)/Total number (Region)
 Rate ratio (Aboriginal:non-Aboriginal) = ASR (Aboriginal)/ASR (non-Aboriginal)
 Calculations by Aboriginality are based on notifications of known Aboriginal status only (i.e. notifications of unknown Aboriginal status are excluded)
 Column totals include cases with interstate, overseas or unknown addresses, which are not shown in the table
 Notifications from Christmas Island, Curtin, Leonora, Perth and Yongah Hill Immigration Detention Centres have been excluded

Table 14 Number and ASR of gonorrhoea notifications by Aboriginality and sex, WA, 2013

Aboriginality	Sex				Total		Rate ratio (Male:Female)
	Male		Female		Number	ASR	
	Number	ASR	Number	ASR			
Aboriginal	544	1,077.3	556	1,091.5	1,100	1,081.7	1.0
non-Aboriginal	657	51.9	208	17.7	865	35.2	2.9
WA (Total)	1,201	92.2	766	63.8	1,967	78.4	1.4
Rate ratio (Aboriginal:non-Aboriginal)	N/A	20.8	N/A	61.7	N/A	30.7	0.3

Notes: Number = Number of notifications reported to the DoH
 ASR = Age-standardised notification rate per 100,000 population
 Rate ratio (Male:Female) = ASR (Male)/ASR (Female)
 Rate ratio (Aboriginal:non-Aboriginal) = ASR (Aboriginal)/ASR (non-Aboriginal)
 N/A = Not applicable
 Calculations by Aboriginality are based on notifications of known Aboriginal status only (i.e. notifications of unknown Aboriginal status are excluded)
 Notifications from Christmas Island, Curtin, Leonora, Perth and Yongah Hill Immigration Detention Centres have been excluded

Table 15 Number and proportion of gonorrhoea notifications by where infection was acquired and sex, WA, 2013

Where infection acquired	Sex				WA (Total)	
	Male		Female		Number	% Total
	Number	% Total	Number	% Total		
WA	950	79.1%	701	91.5%	1,651	83.9%
Interstate	34	2.8%	12	1.6%	46	2.3%
Overseas	147	12.2%	17	2.2%	164	8.3%
Unknown	70	5.8%	36	4.7%	106	5.4%
Total	1,201	100.0%	766	100.0%	1,967	100.0%

Notes: Number = Number of notifications reported to the DoH
 % Total = Number of notifications (Sex & Where infection acquired)/Total number of notifications (Sex) or overall
 Notifications from Christmas Island, Curtin, Leonora, Perth and Yongah Hill Immigration Detention Centres have been excluded

Table 16 Number and crude rate of gonorrhoea notifications by state and territory, Australia, 2013

Notifications	State/Territory								AUS (Total)
	ACT	NSW	NT	QLD	SA	TAS	VIC	WA	
Number	114	4,237	1,985	2,734	808	71	3,012	1,970	14,931
Crude rate	30.4	58.0	844.0	59.9	48.8	13.9	53.5	81.0	65.8

Notes: Number = Number of notifications reported to state and territory health authorities
 Crude rate = Crude rate per 100,000 population
 Data sourced from NNDSS, extracted 5 May 2014; data are provisional and subject to future revision

Table 17 Number and age-specific rate of gonorrhoea notifications by sex and Aboriginality, WA, 2013

Age group (Years)	Sex	Aboriginality						Total		Rate ratio (Aboriginal: non-Aboriginal)
		Aboriginal		non-Aboriginal		Unknown		Number	Rate	
		Number	Rate	Number	Rate	Number	% Total			
0-9	Male	0	0.0	0	0.0	0	N/A	0	0.0	N/A
	Female	1	12.4	0	0.0	0	0.0%	1	0.6	N/A
	Total	1	6.1	0	0.0	0	N/A	1	0.3	N/A
10-14	Male	12	260.9	1	1.4	0	0.0%	13	16.9	186.4
	Female	59	1,377.9	1	1.4	0	0.0%	60	80.7	984.2
	Total	71	799.5	2	1.4	0	0.0%	73	48.3	571.1
15-19	Male	190	4,275.4	67	86.8	0	0.0%	257	314.8	49.3
	Female	210	5,143.3	52	70.7	1	0.4%	263	338.8	72.7
	Total	400	4,691.0	119	79.0	1	0.2%	520	326.5	59.4
20-24	Male	155	3,917.1	148	155.6	0	0.0%	303	305.9	25.2
	Female	150	3,996.8	45	51.4	1	0.5%	196	214.7	77.8
	Total	305	3,955.9	193	105.7	1	0.2%	499	262.2	37.4
25-29	Male	84	2,581.4	142	135.5	0	0.0%	226	209.1	19.1
	Female	60	1,885.0	41	43.6	0	0.0%	101	103.9	43.2
	Total	144	2,237.1	183	92.1	0	0.0%	327	159.3	24.3
30-34	Male	49	1,739.4	97	111.2	0	0.0%	146	162.1	15.6
	Female	34	1,305.2	28	33.5	0	0.0%	62	72.0	39.0
	Total	83	1,530.8	125	73.2	0	0.0%	208	118.1	20.9
35-39	Male	27	1,031.7	64	75.7	0	0.0%	91	104.4	13.6
	Female	20	799.4	13	15.6	0	0.0%	33	38.5	51.2
	Total	47	918.1	77	45.9	0	0.0%	124	71.7	20.0
40-44	Male	15	625.8	50	56.4	0	0.0%	65	71.4	11.1
	Female	14	573.1	8	9.3	0	0.0%	22	24.8	61.6
	Total	29	599.2	58	33.2	0	0.0%	87	48.4	18.0
45-49	Male	6	297.9	35	41.0	0	0.0%	41	46.9	7.3
	Female	7	329.1	9	10.8	0	0.0%	16	18.7	30.5
	Total	13	313.9	44	26.0	0	0.0%	57	32.9	12.1
50+	Male	6	119.0	53	14.8	0	0.0%	59	16.2	8.0
	Female	1	17.8	11	2.9	0	0.0%	12	3.1	6.1
	Total	7	65.7	64	8.7	0	0.0%	71	9.5	7.6
WA (Total)	Male	544	1,079.4	657	52.0	0	0.0%	1,201	92.4	20.8
	Female	556	1,092.7	208	17.7	2	0.3%	766	63.7	61.7
	Total	1,100	1,083.7	865	35.3	2	0.1%	1,967	78.4	30.7

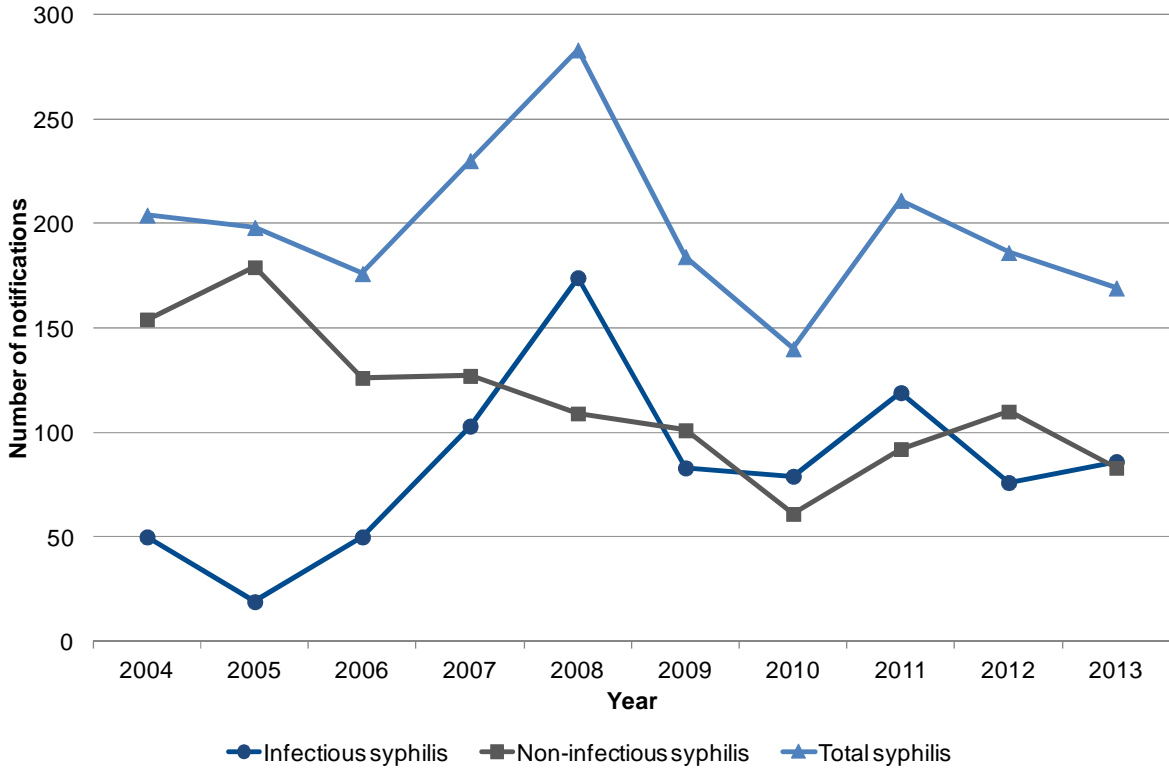
Notes: Number = Number of notifications reported to the DoH
Rate (Age group) = Age-specific rate
Rate (WA Total) = Age-standardised notification rate per 100,000 population
% (Total) = Number (Unknown)/Total number (Age group)
Rate ratio (Aboriginal:non-Aboriginal) = Aboriginal to non-Aboriginal rate ratio = Aboriginal rate (Age group)/non-Aboriginal rate (Age group)
N/A = Not applicable
Calculations by Aboriginality are based on notifications of known Aboriginal status only (i.e. notifications of unknown Aboriginal status are excluded)
Notifications from Christmas Island, Curtin, Leonora, Perth and Yongah Hill Immigration Detention Centres have been excluded

Table 18 Number and age-specific rate of gonorrhoea notifications by region and Aboriginality, WA, 2013

Region	Aboriginality	Rate	Age group (Years)											Total
			0-9	10-14	15-19	20-24	25-29	30-34	35-39	40-44	45-49	50+	Unknown	
Goldfields	Aboriginal	Number	0	9	46	47	14	10	7	5	2	1	0	141
		Rate	0.0	1,444.6	7,783.4	7,617.5	2,626.6	2,375.3	1,781.2	1,351.4	632.9	117.2	N/A	1,841.7
	non-Aboriginal	Number	0	0	3	1	0	0	2	0	1	0	0	7
		Rate	0.0	0.0	90.9	24.1	0.0	0.0	49.4	0.0	24.2	0.0	N/A	13.4
	Total	Number	0	9	49	48	14	10	9	5	3	1	0	148
		Rate	0.0	226.0	1,259.0	1,006.1	256.6	226.6	202.6	116.2	67.3	7.1	N/A	237.9
Great Southern	Aboriginal	Number	0	0	6	3	0	0	0	0	1	0	0	10
		Rate	0.0	0.0	2,238.8	1,369.9	0.0	0.0	0.0	0.0	775.2	0.0	N/A	302.2
	non-Aboriginal	Number	0	0	3	1	1	2	0	2	0	1	0	10
		Rate	0.0	0.0	90.6	33.0	33.2	60.8	0.0	50.0	0.0	4.4	N/A	20.6
	Total	Number	0	0	9	5	1	2	0	2	1	1	0	21
		Rate	0.0	0.0	251.3	154.0	31.4	58.3	0.0	48.0	23.3	4.3	N/A	41.1
Kimberley	Aboriginal	Number	0	39	191	132	68	35	25	14	4	0	0	508
		Rate	0.0	2,026.0	12,674.2	9,097.2	4,418.5	2,682.0	2,236.1	1,412.7	463.5	0.0	N/A	2,469.6
	non-Aboriginal	Number	0	0	2	5	3	4	3	1	0	1	0	19
		Rate	0.0	0.0	267.0	268.0	116.1	182.1	147.8	50.3	0.0	18.1	N/A	79.1
	Total	Number	0	39	193	137	71	39	28	15	4	1	0	527
		Rate	0.0	1,358.9	8,547.4	4,127.7	1,722.0	1,113.0	889.2	503.4	153.6	12.6	N/A	1,297.2
Midwest	Aboriginal	Number	1	5	27	16	3	4	2	1	0	1	0	60
		Rate	54.6	552.5	3,143.2	2,416.9	537.6	751.9	420.2	220.3	0.0	89.4	N/A	597.6
	non-Aboriginal	Number	0	0	3	5	3	1	0	0	1	3	0	16
		Rate	0.0	0.0	89.6	145.1	75.8	27.7	0.0	0.0	22.0	14.4	N/A	29.2
	Total	Number	1	5	30	21	6	5	2	1	1	4	0	76
		Rate	10.9	104.6	712.6	511.1	132.8	120.5	43.6	20.5	20.3	18.2	N/A	123.0
North Metro	Aboriginal	Number	0	2	19	25	7	5	2	2	2	1	0	65
		Rate	0.0	135	1,197.2	1,655.6	599.8	529.7	216.2	226.2	253.2	58.4	N/A	355.8
	non-Aboriginal	Number	0	1	48	88	87	65	43	30	26	30	0	418
		Rate	0.0	2	73.9	112.3	101.2	89.6	60.6	40.3	36.5	9.9	N/A	40.0
	Total	Number	0	3	67	113	94	70	45	32	28	31	0	483
		Rate	0.0	4.9	100.7	141.5	107.9	95.3	62.6	42.5	38.9	10.2	N/A	45.6
Pilbara	Aboriginal	Number	0	11	58	49	38	17	7	7	2	2	0	191
		Rate	0.0	1,294.1	6,946.1	6,210.4	5,919.0	2,901.0	1,136.4	1,202.7	435.7	166.7	N/A	1,896.3
	non-Aboriginal	Number	0	0	1	6	2	5	1	1	0	4	0	20
		Rate	0.0	0.0	45.6	118.6	24.8	77.5	15.8	18.0	0.0	38.3	N/A	32.3
	Total	Number	0	11	59	55	40	22	8	8	2	6	0	211
		Rate	0.0	327.2	1,946.6	940.7	459.5	312.6	115.2	130.0	37.6	51.4	N/A	314.6
South Metro	Aboriginal	Number	0	5	49	31	12	10	3	0	2	2	0	114
		Rate	0.0	282.2	2,640.1	1,765.4	879.1	946.1	297.9	0.0	244.5	98.1	N/A	525.4
	non-Aboriginal	Number	0	1	53	79	75	45	25	17	11	17	0	323
		Rate	0.0	1.9	89.4	106.2	98.9	69.6	40.7	26.8	18.0	6.1	N/A	34.1
	Total	Number	0	6	103	110	87	55	28	17	13	19	0	438
		Rate	0.0	11.1	168.5	144.5	112.6	83.7	44.8	26.4	20.9	6.8	N/A	45.6
South West	Aboriginal	Number	0	0	3	0	0	1	0	0	0	0	0	4
		Rate	0.0	0.0	631.6	0.0	0.0	485.4	0.0	0.0	0.0	0.0	N/A	80.7
	non-Aboriginal	Number	0	0	1	3	5	1	1	3	1	1	0	16
		Rate	0.0	0.0	9.9	33.2	48.9	9.7	9.1	24.8	8.5	1.8	N/A	10.9
	Total	Number	0	0	4	3	5	2	1	3	1	1	0	20
		Rate	0.0	0.0	37.8	32.0	47.8	19.1	9.0	24.3	8.4	1.8	N/A	13.3
Wheatbelt	Aboriginal	Number	0	0	1	1	2	1	0	0	0	0	0	5
		Rate	0.0	0.0	185.9	288.2	985.2	467.3	0.0	0.0	0.0	0.0	N/A	139.0
	non-Aboriginal	Number	0	0	5	2	3	0	0	1	1	3	0	15
		Rate	0.0	0.0	142.9	60.9	70.7	0.0	0.0	19.6	18.9	10.2	N/A	24.9
	Total	Number	0	0	6	3	5	1	0	1	1	3	0	20
		Rate	0.0	0.0	148.5	82.6	112.4	25.1	0.0	18.7	18.2	10.0	N/A	31.5
WA (Total)	Aboriginal	Number	1	71	400	305	144	83	47	29	13	7	0	1,100
		Rate	6.1	799.5	4,691.0	3,955.9	2,237.1	1,530.8	918.1	599.2	313.9	65.7	N/A	1,083.7
	non-Aboriginal	Number	0	2	119	193	183	125	77	58	44	64	0	865
		Rate	0.0	1.4	79.0	105.7	92.1	73.2	45.9	33.2	26.0	8.7	N/A	35.3
	Total	Number	1	73	520	499	327	208	124	87	57	71	0	1,967
		Rate	0.3	48.3	326.5	262.2	159.3	118.1	71.7	48.4	32.9	9.5	N/A	78.4

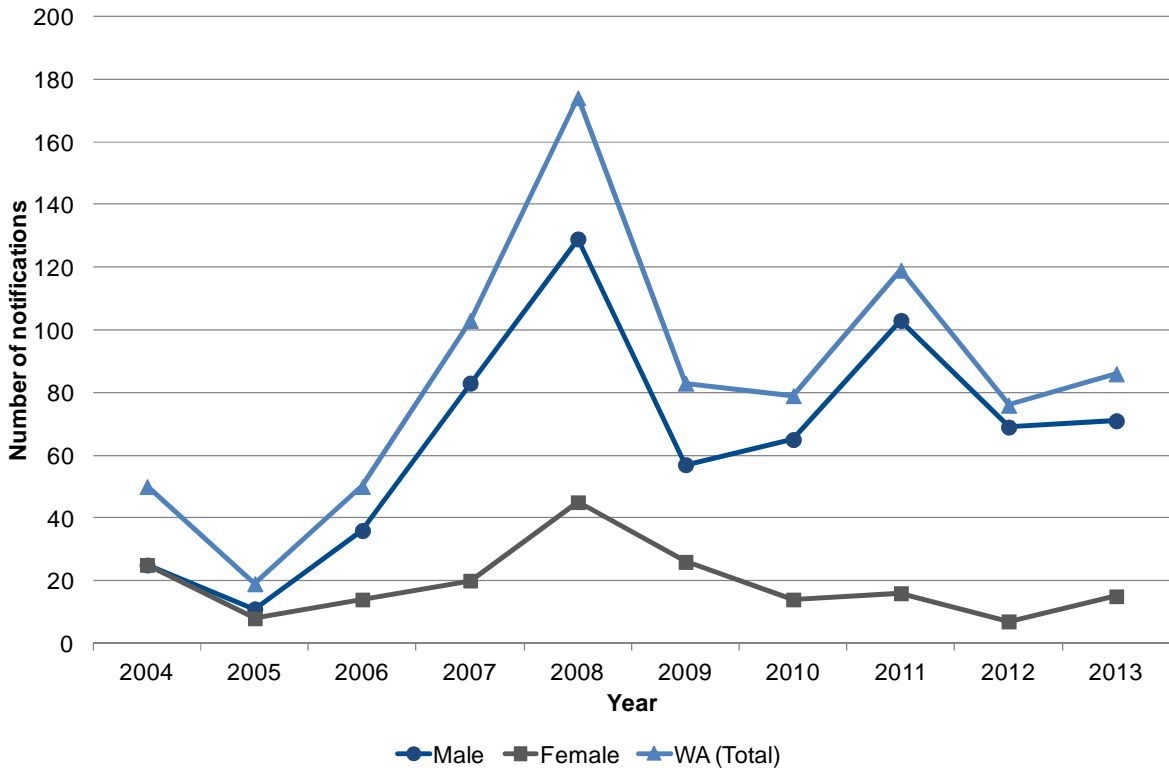
Notes: Number = Number of notifications reported to the DoH
Rate (Age group) = Age-specific rate
Rate (WA Total) = Age-standardised notification rate per 100,000 population
N/A = Not applicable
Calculations by Aboriginality are based on notifications of known Aboriginal status only (i.e. notifications of unknown Aboriginal status are excluded)
Column totals include cases with interstate, overseas or unknown addresses, which are not shown in the table
Notifications from Christmas Island, Curtin, Leonora, Perth and Yongah Hill Immigration Detention Centres have been excluded

Figure 5 Number of syphilis notifications by disease status, WA, 2004 to 2013



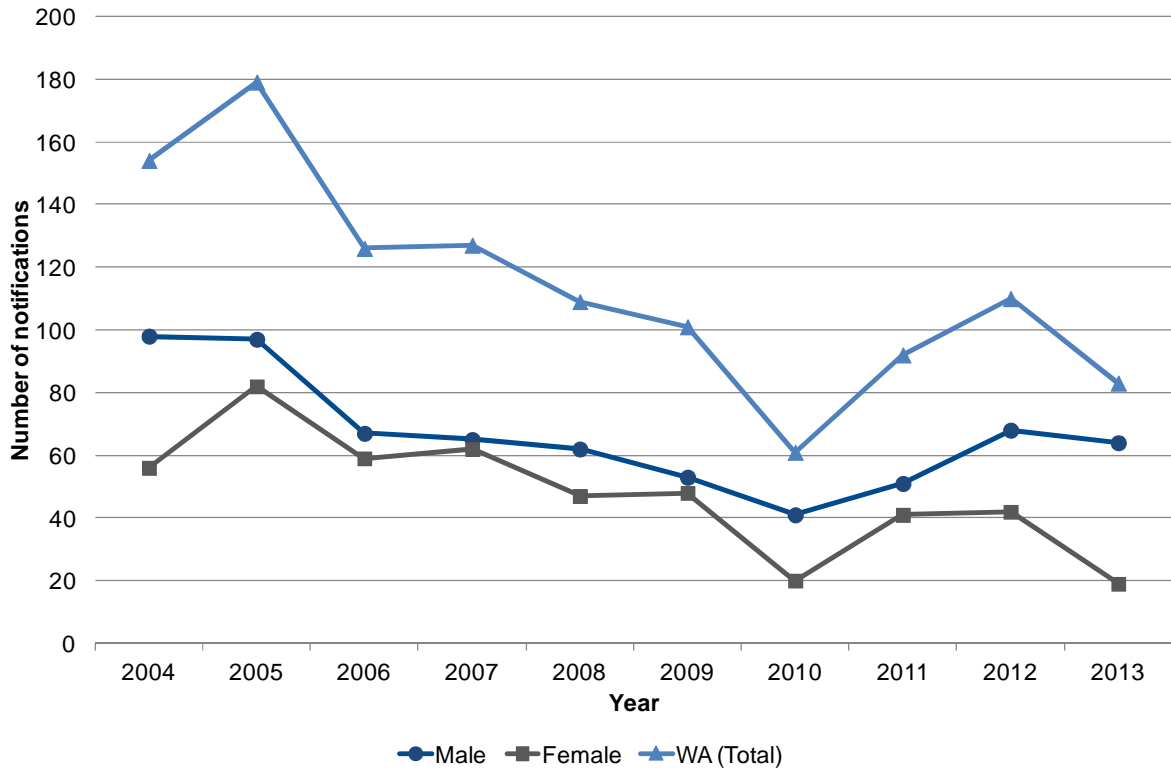
Notes: Infectious syphilis = Primary syphilis + Secondary syphilis + Early latent syphilis (less than two years duration)
 Non-infectious syphilis = More than two years or unknown duration
 Total syphilis = Infectious syphilis + Non-infectious syphilis
 In addition to the number of notifications above, one case of Congenital syphilis was notified to the DoH in each of 2006 and 2010 and two cases were notified in 2013
 Notifications from Christmas Island, Curtin, Leonora, Perth and Yongah Hill Immigration Detention Centres have been excluded

Figure 6 Number of infectious syphilis notifications by sex, WA, 2004 to 2013



Notes: Infectious syphilis = Primary syphilis + Secondary syphilis + Early latent syphilis (less than two years duration)
 Notifications from Christmas Island, Curtin, Leonora, Perth and Yongah Hill Immigration Detention Centres have been excluded

Figure 7 Number of non-infectious syphilis notifications by sex, WA, 2004 to 2013



Notes: Non-infectious syphilis = More than two years or unknown duration
 Notifications from Christmas Island, Curtin, Leonora, Perth and Yongah Hill Immigration Detention Centres have been excluded

Table 19 Number, crude rate and ASR syphilis notifications by region and sex, WA, 2013

Region	Disease stage	Sex						Rate ratio (Male:Female)
		Male		Female		Total		
		Number	ASR	Number	ASR	Number	ASR	
Goldfields	Infectious	2	5.3	0	0.0	2	2.8	N/A
	Non-infectious	2	6.0	0	0.0	2	3.4	N/A
	Total syphilis	4	11.3	0	0.0	4	6.2	N/A
Great Southern	Infectious	0	0.0	0	0.0	0	0.0	N/A
	Non-infectious	0	0.0	1	2.0	1	1.0	0.0
	Total syphilis	0	0.0	1	2.0	1	1.0	0.0
Kimberley	Infectious	0	0.0	0	0.0	0	0.0	N/A
	Non-infectious	2	10.3	2	10.4	4	10.6	1.0
	Total syphilis	2	10.3	2	10.4	4	10.6	1.0
Midwest	Infectious	2	6.1	1	3.5	3	5.1	1.7
	Non-infectious	1	3.0	1	3.4	2	3.2	0.9
	Total syphilis	3	9.1	2	6.9	5	8.3	1.3
North Metropolitan	Infectious	45	8.6	8	1.5	53	5.1	5.7
	Non-infectious	32	6.2	7	1.3	39	3.7	4.8
	Total syphilis	77	14.8	15	2.9	92	8.8	5.1
Pilbara	Infectious	2	3.1	0	0.0	2	1.9	N/A
	Non-infectious	3	5.5	0	0.0	3	3.5	N/A
	Total syphilis	5	8.5	0	0.0	5	5.4	N/A
South Metropolitan	Infectious	11	2.3	4	0.9	15	1.6	2.6
	Non-infectious	23	4.6	8	1.7	31	3.2	2.7
	Total syphilis	34	6.9	12	2.7	46	4.8	2.6
South West	Infectious	1	1.2	0	0.0	1	0.6	N/A
	Non-infectious	0	0.0	0	0.0	0	0.0	N/A
	Total syphilis	1	1.2	0	0.0	1	0.6	N/A
Wheatbelt	Infectious	3	8.5	2	6.8	5	7.6	1.3
	Non-infectious	0	0.0	0	0.0	0	0.0	N/A
	Total syphilis	3	8.5	2	6.8	5	7.6	1.3
WA (Total)	Infectious	71	5.5	15	1.3	86	3.4	4.2
	Non-infectious	64	4.9	19	1.5	83	3.2	3.3
	Total syphilis	135	10.4	34	2.8	169	6.6	3.7

Notes: Number = Number of notifications reported to the DoH
ASR = Age-standardised notification rate per 100,000 population
Rate ratio (Male:Female) = ASR (Male)/ASR (Female)
Infectious syphilis = Primary syphilis + Secondary syphilis + Early latent syphilis (less than two years duration)
Non-infectious syphilis = More than two years or unknown duration
Total syphilis = Infectious syphilis + Non-infectious syphilis
N/A = Not applicable
Column totals include cases with interstate, overseas or unknown addresses, which are not shown in the table
Notifications from Christmas Island, Curtin, Leonora, Perth and Yongah Hill Immigration Detention Centres have been excluded

Table 20 Number, crude rate and ASR of infectious syphilis notifications by region, WA, 2004 to 2013

Region	Rate	Year									
		2004	2005	2006	2007	2008	2009	2010	2011	2012	2013
Goldfields	Number	3	7	8	9	7	3	5	5	6	2
	Crude	5.6	13.1	15.0	16.6	12.6	5.3	8.8	8.7	10.3	3.4
	ASR	5.1	12.4	14.2	15.5	11.9	5.0	8.3	7.7	10.8	2.8
Great Southern	Number	0	0	1	0	1	0	3	2	2	0
	Crude	0.0	0.0	1.7	0.0	1.7	0.0	4.9	3.4	3.3	0.0
	ASR	0.0	0.0	2.4	0.0	1.8	0.0	6.2	4.6	4.2	0.0
Kimberley	Number	38	5	11	15	27	20	9	10	0	0
	Crude	118.8	15.7	34.4	45.2	79.0	57.1	25.2	26.5	0.0	0.0
	ASR	107.6	14.0	30.8	41.1	73.7	52.4	22.9	25.5	0.0	0.0
Midwest	Number	1	0	0	1	0	0	3	3	0	3
	Crude	1.7	0.0	0.0	1.6	0.0	0.0	4.6	4.6	0.0	4.5
	ASR	1.6	0.0	0.0	1.3	0.0	0.0	5.1	4.7	0.0	5.1
North Metropolitan	Number	7	2	21	64	69	30	35	58	42	53
	Crude	0.9	0.2	2.5	7.3	7.7	3.2	3.7	6.0	4.2	5.2
	ASR	0.9	0.2	2.4	7.3	7.6	3.2	3.6	5.8	4.1	5.1
Pilbara	Number	1	0	0	2	38	9	4	3	1	2
	Crude	2.4	0.0	0.0	4.4	82.6	18.9	8.2	4.8	1.6	3.0
	ASR	1.7	0.0	0.0	3.4	82.8	17.2	7.6	5.7	1.0	1.9
South Metropolitan	Number	0	5	8	11	30	19	19	34	23	15
	Crude	0.0	0.7	1.1	1.4	3.8	2.3	2.3	3.9	2.6	1.6
	ASR	0.0	0.6	1.0	1.5	3.8	2.2	2.3	3.7	2.6	1.6
South West	Number	0	0	1	0	0	0	0	3	2	1
	Crude	0.0	0.0	0.7	0.0	0.0	0.0	0.0	1.9	1.2	0.6
	ASR	0.0	0.0	0.7	0.0	0.0	0.0	0.0	2.1	1.2	0.6
Wheatbelt	Number	0	0	0	0	2	1	1	0	0	5
	Crude	0.0	0.0	0.0	0.0	2.7	1.3	1.3	0.0	0.0	6.5
	ASR	0.0	0.0	0.0	0.0	2.7	1.9	1.5	0.0	0.0	7.6
WA (Total)	Number	50	19	50	103	174	83	79	119	76	86
	Crude	2.5	0.9	2.4	4.9	8.0	3.7	3.4	5.1	3.1	3.5
	ASR	2.5	0.9	2.4	4.9	7.9	3.6	3.4	4.9	3.1	3.4

Notes: Number = Number of notifications reported to the DoH
 Crude = Crude notification rate per 100,000 population
 ASR = Age-standardised notification rate per 100,000 population
 Infectious syphilis = Primary syphilis + Secondary syphilis + Early latent syphilis (less than two years duration)
 Column totals include cases with interstate, overseas or unknown addresses, which are not shown in the table
 Notifications from Christmas Island, Curtin, Leonora, Perth and Yongah Hill Immigration Detention Centres have been excluded

Table 21 Number, crude rate and ASR of non-infectious syphilis notifications by region, WA, 2004 to 2013

Region	Rate	Year									
		2004	2005	2006	2007	2008	2009	2010	2011	2012	2013
Goldfields	Number	3	4	2	6	8	6	2	11	13	2
	Crude	5.6	7.5	3.7	11.0	14.4	10.7	3.5	19.2	22.4	3.4
	ASR	4.8	7.2	3.7	11.4	14.0	10.3	7.0	18.7	24.0	3.4
Great Southern	Number	0	1	2	1	0	0	1	0	2	1
	Crude	0.0	1.8	3.5	1.7	0.0	0.0	1.6	0.0	3.3	1.7
	ASR	0.0	1.7	3.3	1.9	0.0	0.0	2.1	0.0	3.9	1.0
Kimberley	Number	80	80	56	61	45	24	10	12	6	4
	Crude	250.2	251.0	175.2	184.0	131.6	68.6	28.0	31.9	15.7	10.1
	ASR	313.7	358.0	241.4	247.9	182.4	96.7	33.0	41.2	15.8	10.6
Midwest	Number	4	8	0	1	0	1	2	2	2	2
	Crude	6.6	13.2	0.0	1.6	0.0	1.5	3.0	3.1	3.0	3.0
	ASR	6.4	12.5	0.0	1.5	0.0	1.3	2.9	2.7	2.8	3.2
North Metropolitan	Number	38	50	37	35	21	35	21	35	41	39
	Crude	4.5	6.0	4.3	4.0	2.3	3.8	2.2	3.6	4.1	3.8
	ASR	4.5	5.8	4.2	4.0	2.3	3.8	2.1	3.5	4.0	3.7
Pilbara	Number	3	7	4	3	6	1	1	2	4	3
	Crude	7.1	16.4	9.1	6.7	13.0	2.1	2.1	3.2	6.5	4.5
	ASR	6.4	13.9	7.8	6.3	16.5	1.5	1.9	7.6	4.6	3.5
South Metropolitan	Number	24	24	23	18	27	32	22	27	31	31
	Crude	3.4	3.3	3.1	2.4	3.4	3.9	2.6	3.1	3.5	3.4
	ASR	3.5	3.2	3.0	2.4	3.4	4.0	2.7	3.1	3.4	3.2
South West	Number	1	1	0	1	1	1	1	3	8	0
	Crude	0.7	0.7	0.0	0.7	0.7	0.6	0.6	1.9	4.8	0.0
	ASR	0.8	0.7	0.0	0.7	0.8	0.5	0.7	2.2	4.7	0.0
Wheatbelt	Number	0	4	1	0	0	0	1	0	2	0
	Crude	0.0	5.4	1.4	0.0	0.0	0.0	1.3	0.0	2.6	0.0
	ASR	0.0	6.3	1.2	0.0	0.0	0.0	0.9	0.0	2.5	0.0
WA (Total)	Number	154	179	126	127	109	101	61	92	110	83
	Crude	7.7	8.9	6.1	6.0	5.0	4.5	2.7	3.9	4.5	3.4
	ASR	7.8	8.8	6.0	6.0	5.0	4.6	2.6	3.8	4.5	3.2

Notes: Number = Number of notifications reported to the DoH
 Crude = Crude notification rate per 100,000 population
 ASR = Age-standardised notification rate per 100,000 population
 Non-infectious syphilis = More than two years or unknown duration
 Column totals include cases with interstate, overseas or unknown addresses, which are not shown in the table
 Notifications from Christmas Island, Curtin, Leonora, Perth and Yongah Hill Immigration Detention Centres have been excluded

Table 22 Number, crude rate and ASR of total syphilis notifications by region, WA, 2004 to 2013

Region	Rate	Year									
		2004	2005	2006	2007	2008	2009	2010	2011	2012	2013
Goldfields	Number	6	11	10	15	15	9	7	16	19	4
	Crude	11.2	20.6	18.7	27.6	27.0	16.0	12.3	27.9	32.7	6.8
	ASR	9.9	19.6	17.9	26.9	25.9	15.2	15.3	26.4	34.8	6.2
Great Southern	Number	0	1	3	1	1	0	4	2	4	1
	Crude	0.0	1.8	5.2	1.7	1.7	0.0	6.5	3.4	6.6	1.7
	ASR	0.0	1.7	5.6	1.9	1.8	0.0	8.3	4.6	8.1	1.0
Kimberley	Number	118	85	67	76	72	44	19	22	6	4
	Crude	369.0	266.7	209.6	229.2	210.6	125.7	53.2	58.4	15.7	10.1
	ASR	421.3	372.0	272.2	289.0	256.1	149.0	55.9	66.8	15.8	10.6
Midwest	Number	5	8	0	2	0	1	5	5	2	5
	Crude	8.3	13.2	0.0	3.2	0.0	1.5	7.6	7.7	3.0	7.4
	ASR	8.0	12.5	0.0	2.9	0.0	1.3	8.0	7.4	2.8	8.3
North Metropolitan	Number	45	52	58	99	90	65	56	93	83	92
	Crude	5.4	6.2	6.8	11.4	10.0	7.0	5.9	9.6	8.3	9.0
	ASR	5.4	6.0	6.6	11.3	9.9	7.0	5.7	9.2	8.1	8.8
Pilbara	Number	4	7	4	5	44	10	5	5	5	5
	Crude	9.5	16.4	9.1	11.1	95.7	21.0	10.3	8.0	8.1	7.5
	ASR	8.1	13.9	7.8	9.6	99.3	18.8	9.4	13.3	5.6	5.4
South Metropolitan	Number	24	29	31	29	57	51	41	61	54	46
	Crude	3.4	4.0	4.2	3.8	7.2	6.2	4.9	7.0	6.0	5.0
	ASR	3.5	3.9	4.1	3.9	7.2	6.3	5.0	6.8	6.0	4.8
South West	Number	1	1	1	1	1	1	1	6	10	1
	Crude	0.7	0.7	0.7	0.7	0.7	0.6	0.6	3.8	6.0	0.6
	ASR	0.8	0.7	0.7	0.7	0.8	0.5	0.7	4.3	5.9	0.6
Wheatbelt	Number	0	4	1	0	2	1	2	0	2	5
	Crude	0.0	5.4	1.4	0.0	2.7	1.3	2.6	0.0	2.6	6.5
	ASR	0.0	6.3	1.2	0.0	2.7	1.9	2.4	0.0	2.5	7.6
WA (Total)	Number	204	198	176	230	283	184	140	211	186	169
	Crude	10.2	9.8	8.5	10.9	13.0	8.2	6.1	9.0	7.7	6.8
	ASR	10.2	9.7	8.4	10.9	13.0	8.2	6.1	8.8	7.6	6.6

Notes: Number = Number of notifications reported to the DoH
 Crude = Crude rate per 100,000 population
 ASR = Age-standardised notification rate per 100,000 population
 Total syphilis = Infectious syphilis + Non-infectious syphilis
 Column totals include cases with interstate, overseas or unknown addresses, which are not shown in the table
 In addition to the number of notifications above, one case of Congenital syphilis was notified to the DoH in each of 2006 and 2010 and two cases were notified in 2013
 Notifications from Christmas Island, Curtin, Leonora, Perth and Yongah Hill Immigration Detention Centres have been excluded

Table 23 Number and age-specific rate of infectious syphilis notifications by sex and Aboriginality, WA, 2013

Age group (Years)	Sex	Aboriginality						Total		Rate ratio (Aboriginal: non-Aboriginal)
		Aboriginal		non-Aboriginal		Unknown		Number	Rate	
		Number	Rate	Number	Rate	Number	% Total			
0-9	Male	0	0.0	0	0.0	0	N/A	0	0.0	N/A
	Female	0	0.0	0	0.0	0	N/A	0	0.0	N/A
	Total	0	0.0	0	0.0	0	N/A	0	0.0	N/A
10-14	Male	0	0.0	0	0.0	0	N/A	0	0.0	N/A
	Female	0	0.0	0	0.0	0	N/A	0	0.0	N/A
	Total	0	0.0	0	0.0	0	N/A	0	0.0	N/A
15-19	Male	0	0.0	1	1.3	0	0.0%	1	1.2	0.0
	Female	0	0.0	1	1.4	0	0.0%	1	1.3	0.0
	Total	0	0.0	2	1.3	0	0.0%	2	1.3	0.0
20-24	Male	0	0.0	9	9.5	0	0.0%	9	9.1	0.0
	Female	1	26.6	1	1.1	0	0.0%	2	2.2	24.2
	Total	1	13.0	10	5.5	0	0.0%	11	5.8	2.4
25-29	Male	2	61.5	9	8.6	0	0.0%	11	10.2	7.2
	Female	1	31.4	0	0.0	0	0.0%	1	1.0	N/A
	Total	3	46.6	9	4.5	0	0.0%	12	5.8	10.4
30-34	Male	0	0.0	10	11.5	0	0.0%	10	11.1	0.0
	Female	3	115.2	1	1.2	0	0.0%	4	4.6	96.0
	Total	3	55.3	11	6.4	0	0.0%	14	7.9	8.6
35-39	Male	0	0.0	8	9.5	0	0.0%	8	9.2	0.0
	Female	0	0.0	3	3.6	0	0.0%	3	3.5	0.0
	Total	0	0.0	11	6.6	0	0.0%	11	6.4	0.0
40-44	Male	0	0.0	8	9.0	0	0.0%	8	8.8	0.0
	Female	1	40.9	0	0.0	0	0.0%	1	1.1	N/A
	Total	1	20.7	8	4.6	0	0.0%	9	5.0	4.5
45-49	Male	0	0.0	6	7.0	0	0.0%	6	6.9	0.0
	Female	0	0.0	2	2.4	0	0.0%	2	2.3	0.0
	Total	0	0.0	8	4.7	0	0.0%	8	4.6	0.0
50+	Male	0	0.0	18	5.0	0	0.0%	18	4.9	0.0
	Female	0	0.0	1	0.3	0	0.0%	1	0.3	0.0
	Total	0	0.0	19	2.6	0	0.0%	19	2.5	0.0
WA (Total)	Male	2	4.5	69	5.6	0	0.0%	71	5.5	0.8
	Female	6	15.9	9	0.8	0	0.0%	15	1.3	19.9
	Total	8	10.0	78	3.2	0	0.0%	86	3.4	3.1

Notes: Number = Number of notifications reported to the DoH
Rate (Age group) = Age-specific rate
Rate (WA Total) = Age-standardised notification rate per 100,000 population
% (Total) = Number (Unknown)/Total number (Age group)
Rate ratio (Aboriginal:non-Aboriginal) = Aboriginal to non-Aboriginal rate ratio = Aboriginal rate (Age group)/non-Aboriginal rate (Age group)
Infectious syphilis = Primary syphilis + Secondary syphilis + Early latent syphilis (less than two years duration)
N/A = Not applicable
Calculations by Aboriginality are based on notifications of known Aboriginal status only (i.e. notifications of unknown Aboriginal status are excluded)
Notifications from Christmas Island, Curtin, Leonora, Perth and Yongah Hill Immigration Detention Centres have been excluded

Table 24 Number and age-specific rate of non-infectious syphilis notifications by sex and Aboriginality, WA, 2013

Age group (Years)	Sex	Aboriginality						Total		Rate ratio (Aboriginal: non-Aboriginal)
		Aboriginal		non-Aboriginal		Unknown		Number	Rate	
		Number	Rate	Number	Rate	Number	% Total			
0-9	Male	0	0.0	0	0.0	0	N/A	0	0.0	N/A
	Female	0	0.0	0	0.0	0	N/A	0	0.0	N/A
	Total	0	0.0	0	0.0	0	N/A	0	0.0	N/A
10-14	Male	0	0.0	0	0.0	0	N/A	0	0.0	N/A
	Female	0	0.0	0	0.0	0	N/A	0	0.0	N/A
	Total	0	0.0	0	0.0	0	N/A	0	0.0	N/A
15-19	Male	0	0.0	1	1.3	0	0.0%	1	1.2	0.0
	Female	0	0.0	0	0.0	0	N/A	0	0.0	N/A
	Total	0	0.0	1	0.7	0	0.0%	1	0.6	0.0
20-24	Male	2	50.5	7	7.4	0	0.0%	9	9.1	6.8
	Female	1	26.6	1	1.1	0	0.0%	2	2.2	24.2
	Total	3	38.9	8	4.4	0	0.0%	11	5.8	8.8
25-29	Male	3	92.2	7	6.7	0	0.0%	10	9.3	13.8
	Female	1	31.4	2	2.1	0	0.0%	3	3.1	15.0
	Total	4	62.1	9	4.5	0	0.0%	13	6.3	13.8
30-34	Male	1	35.5	5	5.7	0	0.0%	6	6.7	6.2
	Female	2	76.8	2	2.4	0	0.0%	4	4.6	32.0
	Total	3	55.3	7	4.1	0	0.0%	10	5.7	13.5
35-39	Male	1	38.2	4	4.7	0	0.0%	5	5.7	8.1
	Female	1	40.0	1	1.2	0	0.0%	2	2.3	33.3
	Total	2	39.1	5	3.0	0	0.0%	7	4.1	13.0
40-44	Male	2	83.4	7	7.9	0	0.0%	9	9.9	10.6
	Female	0	0.0	1	1.2	0	0.0%	1	1.1	0.0
	Total	2	41.3	8	4.6	0	0.0%	10	5.6	9.0
45-49	Male	1	49.7	4	4.7	0	0.0%	5	5.7	10.6
	Female	1	47.0	2	2.4	0	0.0%	3	3.5	19.6
	Total	2	48.3	6	3.6	0	0.0%	8	4.6	13.4
50+	Male	4	79.4	15	4.2	0	0.0%	19	5.2	18.9
	Female	1	17.8	3	0.8	0	0.0%	4	1.0	22.3
	Total	5	46.9	18	2.4	0	0.0%	23	3.1	19.5
WA (Total)	Male	14	48.3	50	4.0	0	0.0%	64	5.0	12.1
	Female	7	21.3	12	1.0	0	0.0%	19	1.5	21.3
	Total	21	34.3	62	2.5	0	0.0%	83	3.3	13.7

Notes: Number = Number of notifications reported to the DoH
Rate (Age group) = Age-specific rate
Rate (WA Total) = Age-standardised notification rate per 100,000 population
% (Total) = Number (Unknown)/Total number (Age group)
Rate ratio (Aboriginal:non-Aboriginal) = Aboriginal to non-Aboriginal rate ratio = Aboriginal rate (Age group)/non-Aboriginal rate (Age group)
Non-infectious syphilis = More than two years or unknown duration
N/A = Not applicable
Calculations by Aboriginality are based on notifications of known Aboriginal status only (i.e. notifications of unknown Aboriginal status are excluded)
Notifications from Christmas Island, Curtin, Leonora, Perth and Yongah Hill Immigration Detention Centres have been excluded

Table 25 Number and age-specific rate of total syphilis notifications by sex and Aboriginality, WA, 2013

Age group (Years)	Sex	Aboriginality						Total		Rate ratio (Aboriginal: non-Aboriginal)
		Aboriginal		non-Aboriginal		Unknown		Number	Rate	
		Number	Rate	Number	Rate	Number	% Total			
0-9	Male	0	0.0	0	0.0	0	N/A	0	0.0	N/A
	Female	0	0.0	0	0.0	0	N/A	0	0.0	N/A
	Total	0	0.0	0	0.0	0	N/A	0	0.0	N/A
10-14	Male	0	0.0	0	0.0	0	N/A	0	0.0	N/A
	Female	0	0.0	0	0.0	0	N/A	0	0.0	N/A
	Total	0	0.0	0	0.0	0	N/A	0	0.0	N/A
15-19	Male	0	0.0	2	2.6	0	0.0%	2	2.5	0.0
	Female	0	0.0	1	1.4	0	0.0%	1	1.3	0.0
	Total	0	0.0	3	2.0	0	0.0%	3	1.9	0.0
20-24	Male	2	50.5	16	16.8	0	0.0%	18	18.2	3.0
	Female	2	53.3	2	2.3	0	0.0%	4	4.4	23.2
	Total	4	51.9	18	9.9	0	0.0%	22	11.6	5.2
25-29	Male	5	153.7	16	15.3	0	0.0%	21	19.4	10.0
	Female	2	62.8	2	2.1	0	0.0%	4	4.1	29.9
	Total	7	108.7	18	9.1	0	0.0%	25	12.2	11.9
30-34	Male	1	35.5	15	17.2	0	0.0%	16	17.8	2.1
	Female	5	191.9	3	3.6	0	0.0%	8	9.3	53.3
	Total	6	110.7	18	10.5	0	0.0%	24	13.6	10.5
35-39	Male	1	38.2	12	14.2	0	0.0%	13	14.9	2.7
	Female	1	40.0	4	4.8	0	0.0%	5	5.8	8.3
	Total	2	39.1	16	9.5	0	0.0%	18	10.4	4.1
40-44	Male	2	83.4	15	16.9	0	0.0%	17	18.7	4.9
	Female	1	40.9	1	1.2	0	0.0%	2	2.3	34.1
	Total	3	62.0	16	9.1	0	0.0%	19	10.6	6.8
45-49	Male	1	49.7	10	11.7	0	0.0%	11	12.6	4.2
	Female	1	47.0	4	4.8	0	0.0%	5	5.8	9.8
	Total	2	48.3	14	8.3	0	0.0%	16	9.2	5.8
50+	Male	4	79.4	33	9.2	0	0.0%	37	10.2	8.6
	Female	1	17.8	4	1.0	0	0.0%	5	1.3	17.8
	Total	5	46.9	37	5.0	0	0.0%	42	5.6	9.4
WA (Total)	Male	16	52.7	119	9.6	0	0.0%	135	10.5	5.5
	Female	13	37.2	21	1.8	0	0.0%	34	2.8	20.7
	Total	29	44.3	140	5.7	0	0.0%	169	6.7	7.8

Notes: Number = Number of notifications reported to the DoH
 Rate (Age group) = Age-specific rate
 Rate (WA Total) = Age-standardised notification rate per 100,000 population
 % (Total) = Number (Unknown)/Total number (Age group)
 Rate ratio (Aboriginal:non-Aboriginal) = Aboriginal to non-Aboriginal rate ratio = Aboriginal rate (Age group)/non-Aboriginal rate (Age group)
 Total syphilis = Infectious syphilis + Non-infectious syphilis
 N/A = Not applicable
 Calculations by Aboriginality are based on notifications of known Aboriginal status only (i.e. notifications of unknown Aboriginal status are excluded)
 Notifications from Christmas Island, Curtin, Leonora, Perth and Yongah Hill Immigration Detention Centres have been excluded

Table 26 Number and age-specific rate of infectious syphilis notifications by region and Aboriginality, WA, 2013

Region	Aboriginality	Rate	Age group (Years)											Total		
			0-9	10-14	15-19	20-24	25-29	30-34	35-39	40-44	45-49	50+	Unknown			
Goldfields	Aboriginal	Number	0	0	0	0	0	0	0	0	0	0	0	0	0	
		Rate	0.0	0.0	0.0	0.0	0.0	0.0	0.0	0.0	0.0	0.0	0.0	0.0	N/A	0.0
	non-Aboriginal	Number	0	0	0	2	0	0	0	0	0	0	0	0	0	2
		Rate	0.0	0.0	0.0	48.2	0.0	0.0	0.0	0.0	0.0	0.0	0.0	0.0	N/A	3.2
	Total	Number	0	0	0	2	0	0	0	0	0	0	0	0	0	2
		Rate	0.0	0.0	0.0	41.9	0.0	0.0	0.0	0.0	0.0	0.0	0.0	0.0	N/A	2.8
Great Southern	Aboriginal	Number	0	0	0	0	0	0	0	0	0	0	0	0	0	
		Rate	0.0	0.0	0.0	0.0	0.0	0.0	0.0	0.0	0.0	0.0	0.0	0.0	N/A	0.0
	non-Aboriginal	Number	0	0	0	0	0	0	0	0	0	0	0	0	0	0
		Rate	0.0	0.0	0.0	0.0	0.0	0.0	0.0	0.0	0.0	0.0	0.0	0.0	N/A	0.0
	Total	Number	0	0	0	0	0	0	0	0	0	0	0	0	0	0
		Rate	0.0	0.0	0.0	0.0	0.0	0.0	0.0	0.0	0.0	0.0	0.0	0.0	N/A	0.0
Kimberley	Aboriginal	Number	0	0	0	0	0	0	0	0	0	0	0	0	0	
		Rate	0.0	0.0	0.0	0.0	0.0	0.0	0.0	0.0	0.0	0.0	0.0	0.0	N/A	0.0
	non-Aboriginal	Number	0	0	0	0	0	0	0	0	0	0	0	0	0	0
		Rate	0.0	0.0	0.0	0.0	0.0	0.0	0.0	0.0	0.0	0.0	0.0	0.0	N/A	0.0
	Total	Number	0	0	0	0	0	0	0	0	0	0	0	0	0	0
		Rate	0.0	0.0	0.0	0.0	0.0	0.0	0.0	0.0	0.0	0.0	0.0	0.0	N/A	0.0
Midwest	Aboriginal	Number	0	0	0	0	1	1	0	0	0	0	0	0	2	
		Rate	0.0	0.0	0.0	0.0	179.2	188.0	0.0	0.0	0.0	0.0	0.0	0.0	N/A	27.2
	non-Aboriginal	Number	0	0	0	1	0	0	0	0	0	0	0	0	1	1
		Rate	0.0	0.0	0.0	29.0	0.0	0.0	0.0	0.0	0.0	0.0	0.0	0.0	N/A	1.9
	Total	Number	0	0	0	1	1	1	0	0	0	0	0	0	0	3
		Rate	0.0	0.0	0.0	24.3	22.1	24.1	0.0	0.0	0.0	0.0	0.0	0.0	N/A	5.1
North Metro	Aboriginal	Number	0	0	0	1	1	1	0	0	0	0	0	0	3	
		Rate	0.0	0	0.0	66.2	85.7	105.9	0.0	0.0	0.0	0.0	0.0	0.0	N/A	18.7
	non-Aboriginal	Number	0	0	1	5	4	4	8	7	5	16	0	0	50	
		Rate	0.0	0	1.5	6.4	4.7	5.5	11.3	9.4	7.0	5.3	N/A	0	4.9	
	Total	Number	0	0	1	6	5	5	8	7	5	16	0	0	53	
		Rate	0.0	0.0	1.5	7.5	5.7	6.8	11.1	9.3	6.9	5.3	N/A	0	5.1	
Pilbara	Aboriginal	Number	0	0	0	0	1	0	0	0	0	0	0	0	1	
		Rate	0.0	0.0	0.0	0.0	155.8	0.0	0.0	0.0	0.0	0.0	0.0	0.0	N/A	11.3
	non-Aboriginal	Number	0	0	0	0	0	1	0	0	0	0	0	0	1	
		Rate	0.0	0.0	0.0	0.0	0.0	15.5	0.0	0.0	0.0	0.0	0.0	0.0	N/A	1.2
	Total	Number	0	0	0	0	1	1	0	0	0	0	0	0	2	
		Rate	0.0	0.0	0.0	0.0	11.5	14.2	0.0	0.0	0.0	0.0	0.0	0.0	N/A	1.9
South Metro	Aboriginal	Number	0	0	0	0	0	1	0	0	0	0	0	0	1	
		Rate	0.0	0.0	0.0	0.0	0.0	94.6	0.0	0.0	0.0	0.0	0.0	0.0	N/A	7.1
	non-Aboriginal	Number	0	0	1	0	4	5	2	0	0	2	0	0	14	
		Rate	0.0	0.0	1.7	0.0	5.3	7.7	3.3	0.0	0.0	0.7	N/A	0	1.5	
	Total	Number	0	0	1	0	4	6	2	0	0	2	0	0	15	
		Rate	0.0	0.0	1.6	0.0	5.2	9.1	3.2	0.0	0.0	0.7	N/A	0	1.6	
South West	Aboriginal	Number	0	0	0	0	0	0	0	0	0	0	0	0	0	
		Rate	0.0	0.0	0.0	0.0	0.0	0.0	0.0	0.0	0.0	0.0	0.0	0.0	N/A	0.0
	non-Aboriginal	Number	0	0	0	0	0	0	0	0	0	1	0	0	1	
		Rate	0.0	0.0	0.0	0.0	0.0	0.0	0.0	0.0	0.0	8.5	0.0	N/A	0.6	
	Total	Number	0	0	0	0	0	0	0	0	0	1	0	0	1	
		Rate	0.0	0.0	0.0	0.0	0.0	0.0	0.0	0.0	0.0	8.4	0.0	N/A	0.6	
Wheatbelt	Aboriginal	Number	0	0	0	0	0	0	0	1	0	0	0	0	1	
		Rate	0.0	0.0	0.0	0.0	0.0	0.0	0.0	0.0	440.5	0.0	0.0	N/A	33.6	
	non-Aboriginal	Number	0	0	0	2	0	0	0	1	0	1	0	0	4	
		Rate	0.0	0.0	0.0	60.9	0.0	0.0	0.0	19.6	0.0	3.4	N/A	0	6.6	
	Total	Number	0	0	0	2	0	0	0	2	0	1	0	0	5	
		Rate	0.0	0.0	0.0	55.1	0.0	0.0	0.0	37.5	0.0	3.3	N/A	0	7.5	
WA (Total)	Aboriginal	Number	0	0	0	1	3	3	0	1	0	0	0	0	8	
		Rate	0.0	0.0	0.0	13.0	46.6	55.3	0.0	20.7	0.0	0.0	N/A	0	10.0	
	non-Aboriginal	Number	0	0	2	10	9	11	11	8	8	19	0	0	78	
		Rate	0.0	0.0	1.3	5.5	4.5	6.4	6.6	4.6	4.7	2.6	N/A	0	3.2	
	Total	Number	0	0	2	11	12	14	11	9	8	19	0	0	86	
		Rate	0.0	0.0	1.3	5.8	5.8	7.9	6.4	5.0	4.6	2.5	N/A	0	3.4	

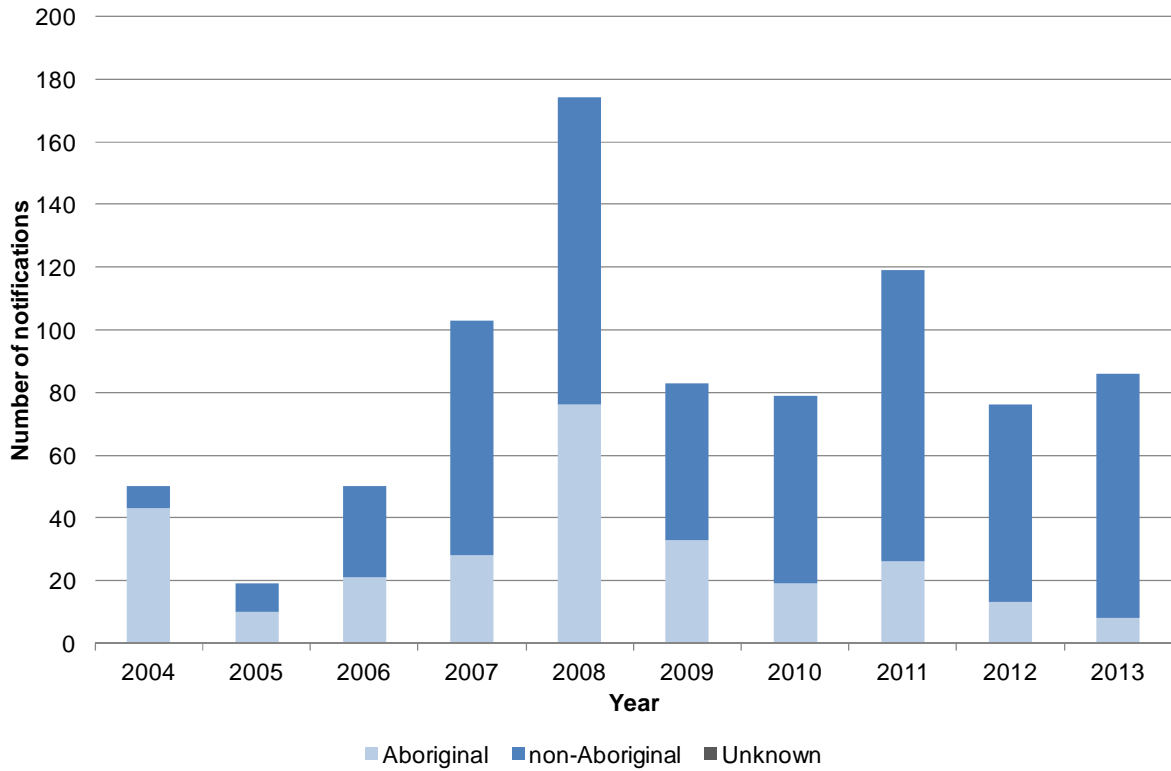
Notes: Number = Number of notifications reported to the DoH
Rate (Age group) = Age-specific rate
Rate (WA Total) = Age-standardised notification rate per 100,000 population
Infectious syphilis = Primary syphilis + Secondary syphilis + Early latent syphilis (less than two years duration)
N/A = Not applicable
Calculations by Aboriginality are based on notifications of known Aboriginal status only (i.e. notifications of unknown Aboriginal status are excluded)
Column totals include cases with interstate, overseas or unknown addresses, which are not shown in the table
Notifications from Christmas Island, Curtin, Leonora, Perth and Yongah Hill Immigration Detention Centres have been excluded

Table 27 Number and age-specific rate of non-infectious syphilis notifications by region and Aboriginality, WA, 2013

Region	Aboriginality	Rate	Age group (Years)											Total	
			0-9	10-14	15-19	20-24	25-29	30-34	35-39	40-44	45-49	50+	Unknown		
Goldfields	Aboriginal	Number	0	0	0	0	0	1	0	0	0	0	1	0	2
		Rate	0.0	0.0	0.0	0.0	0.0	237.5	0.0	0.0	0.0	0.0	117.2	N/A	51.6
	non-Aboriginal	Number	0	0	0	0	0	0	0	0	0	0	0	0	0
		Rate	0.0	0.0	0.0	0.0	0.0	0.0	0.0	0.0	0.0	0.0	0.0	N/A	0.0
	Total	Number	0	0	0	0	0	1	0	0	0	0	1	0	2
		Rate	0.0	0.0	0.0	41.9	0.0	0.0	0.0	0.0	0.0	0.0	0.0	N/A	2.8
Great Southern	Aboriginal	Number	0	0	0	0	0	0	0	0	0	0	0	0	
		Rate	0.0	0.0	0.0	0.0	0.0	0.0	0.0	0.0	0.0	0.0	0.0	N/A	0.0
	non-Aboriginal	Number	0	0	0	0	0	0	0	0	0	0	1	0	1
		Rate	0.0	0.0	0.0	0.0	0.0	0.0	0.0	0.0	0.0	0.0	4.4	N/A	1.3
	Total	Number	0	0	0	0	0	0	0	0	0	0	1	0	1
		Rate	0.0	0.0	0.0	0.0	0.0	0.0	0.0	0.0	0.0	0.0	4.3	N/A	1.2
Kimberley	Aboriginal	Number	0	0	0	0	0	1	0	0	1	1	0	3	
		Rate	0.0	0.0	0.0	0.0	0.0	76.6	0.0	0.0	115.9	41.7	N/A	25.9	
	non-Aboriginal	Number	0	0	0	0	0	0	0	0	1	0	0	1	
		Rate	0.0	0.0	0.0	0.0	0.0	0.0	0.0	0.0	57.5	0.0	N/A	4.0	
	Total	Number	0	0	0	0	0	1	0	0	2	1	0	4	
		Rate	0.0	0.0	0.0	0.0	0.0	28.5	0.0	0.0	76.8	12.6	N/A	11.1	
Midwest	Aboriginal	Number	0	0	0	1	1	0	0	0	0	0	0	2	
		Rate	0.0	0.0	0.0	151.1	179.2	0.0	0.0	0.0	0.0	0.0	N/A	23.1	
	non-Aboriginal	Number	0	0	0	0	0	0	0	0	0	0	0	0	
		Rate	0.0	0.0	0.0	0.0	0.0	0.0	0.0	0.0	0.0	0.0	N/A	0.0	
	Total	Number	0	0	0	1	1	0	0	0	0	0	0	2	
		Rate	0.0	0.0	0.0	24.3	22.1	0.0	0.0	0.0	0.0	0.0	N/A	3.2	
North Metro	Aboriginal	Number	0	0	0	1	2	0	1	1	1	3	0	9	
		Rate	0.0	0	0.0	66.2	171.4	0.0	108.1	113.1	126.6	175.3	N/A	92.9	
	non-Aboriginal	Number	0	0	0	5	2	4	3	5	2	9	0	30	
		Rate	0.0	0	0.0	6.4	2.3	5.5	4.2	6.7	2.8	3.0	N/A	2.9	
	Total	Number	0	0	0	6	4	4	4	6	3	12	0	39	
		Rate	0.0	0.0	0.0	7.5	4.6	5.4	5.6	8.0	4.2	3.9	N/A	3.7	
Pilbara	Aboriginal	Number	0	0	0	0	0	0	1	1	0	0	0	2	
		Rate	0.0	0.0	0.0	0.0	0.0	0.0	162.3	171.8	0.0	0.0	N/A	25.6	
	non-Aboriginal	Number	0	0	0	1	0	0	0	0	0	0	0	1	
		Rate	0.0	0.0	0.0	19.8	0.0	0.0	0.0	0.0	0.0	0.0	N/A	1.3	
	Total	Number	0	0	0	1	0	0	1	1	0	0	0	3	
		Rate	0.0	0.0	0.0	17.1	0.0	0.0	14.4	16.3	0.0	0.0	N/A	3.5	
South Metro	Aboriginal	Number	0	0	0	1	1	1	0	0	0	0	0	3	
		Rate	0.0	0.0	0.0	56.9	73.3	94.6	0.0	0.0	0.0	0.0	N/A	16.3	
	non-Aboriginal	Number	0	0	1	2	7	3	2	3	3	7	0	28	
		Rate	0.0	0.0	1.7	2.7	9.2	4.6	3.3	4.7	4.9	2.5	N/A	3.0	
	Total	Number	0	0	1	3	8	4	2	3	3	7	0	31	
		Rate	0.0	0.0	1.6	3.9	10.4	6.1	3.2	4.7	4.8	2.5	N/A	3.2	
South West	Aboriginal	Number	0	0	0	0	0	0	0	0	0	0	0	0	
		Rate	0.0	0.0	0.0	0.0	0.0	0.0	0.0	0.0	0.0	0.0	N/A	0.0	
	non-Aboriginal	Number	0	0	0	0	0	0	0	0	0	0	0	0	
		Rate	0.0	0.0	0.0	0.0	0.0	0.0	0.0	0.0	0.0	0.0	N/A	0.0	
	Total	Number	0	0	0	0	0	0	0	0	0	0	0	0	
		Rate	0.0	0.0	0.0	0.0	0.0	0.0	0.0	0.0	0.0	0.0	N/A	0.0	
Wheatbelt	Aboriginal	Number	0	0	0	0	0	0	0	0	0	0	0	0	
		Rate	0.0	0.0	0.0	0.0	0.0	0.0	0.0	0.0	0.0	0.0	N/A	0.0	
	non-Aboriginal	Number	0	0	0	0	0	0	0	0	0	0	0	0	
		Rate	0.0	0.0	0.0	0.0	0.0	0.0	0.0	0.0	0.0	0.0	N/A	0.0	
	Total	Number	0	0	0	0	0	0	0	0	0	0	0	0	
		Rate	0.0	0.0	0.0	0.0	0.0	0.0	0.0	0.0	0.0	0.0	N/A	0.0	
WA (Total)	Aboriginal	Number	0	0	0	3	4	3	2	2	2	5	0	21	
		Rate	0.0	0.0	0.0	38.9	62.1	55.3	39.1	41.3	48.3	46.9	N/A	34.3	
	non-Aboriginal	Number	0	0	1	8	9	7	5	8	6	18	0	62	
		Rate	0.0	0.0	0.7	4.4	4.5	4.1	3.0	4.6	3.6	2.4	N/A	2.5	
	Total	Number	0	0	1	11	13	10	7	10	8	23	0	83	
		Rate	0.0	0.0	0.6	5.8	6.3	5.7	4.1	5.6	4.6	3.1	N/A	3.3	

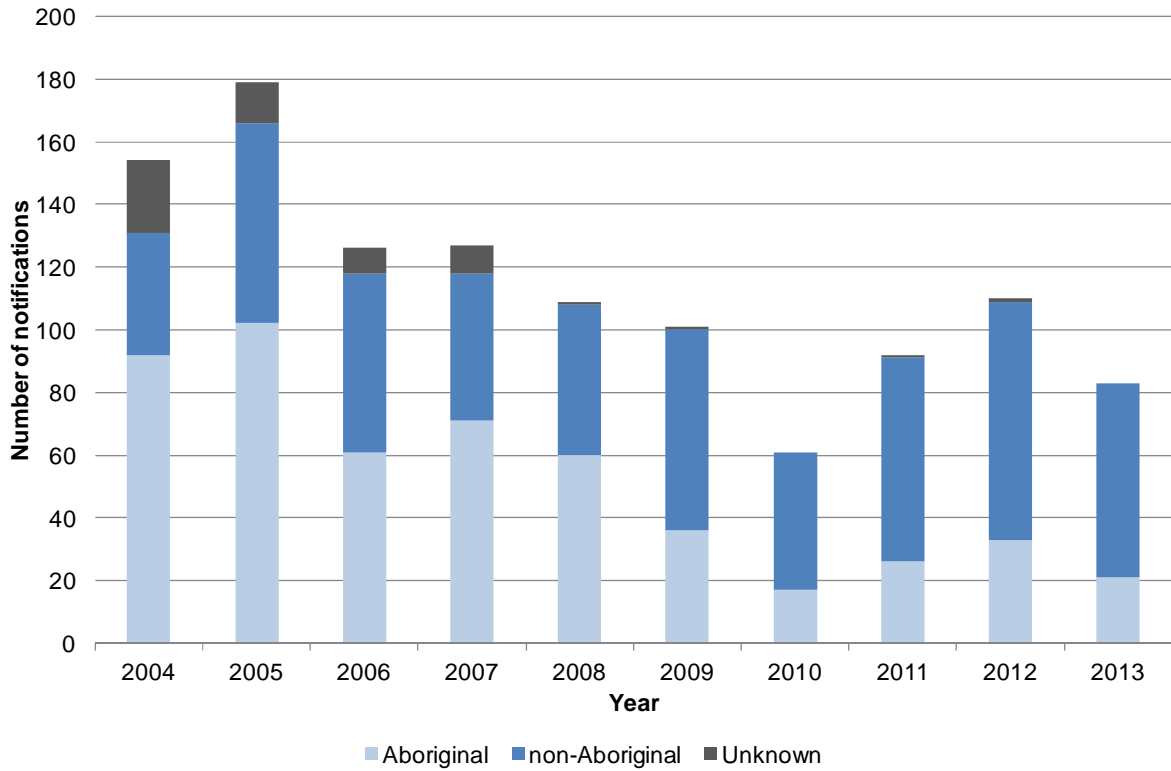
Notes: Number = Number of notifications reported to the DoH
Rate (Age group) = Age-specific rate
Rate (WA Total) = Age-standardised notification rate per 100,000 population
Non-infectious syphilis = More than two years or unknown duration
N/A = Not applicable
Calculations by Aboriginality are based on notifications of known Aboriginal status only (i.e. notifications of unknown Aboriginal status are excluded)
Column totals include cases with interstate, overseas or unknown addresses, which are not shown in the table
Notifications from Christmas Island, Curtin, Leonora, Perth and Yongah Hill Immigration Detention Centres have been excluded

Figure 8 Number of infectious syphilis notifications by Aboriginality, WA, 2004 to 2013



Notes: Infectious syphilis = Primary syphilis + Secondary syphilis + Early latent syphilis (less than two years duration)
Notifications from Christmas Island, Curtin, Leonora, Perth and Yongah Hill Immigration Detention Centres have been excluded

Figure 9 Number of non-infectious syphilis notifications by Aboriginality, WA, 2004 to 2013



Notes: Non-infectious syphilis = More than two years or unknown duration
 Notifications from Christmas Island, Curtin, Leonora, Perth and Yongah Hill Immigration Detention Centres have been excluded

Table 28 Number and ASR of syphilis notifications by region, disease status and Aboriginality, WA, 2013

Region	Disease stage	Aboriginality						Total		Rate ratio (Aboriginal: non-Aboriginal)
		Aboriginal		non-Aboriginal		Unknown		Number	ASR	
		Number	ASR	Number	ASR	Number	% Total			
Goldfields	Infectious	0	0.0	2	3.2	0	0.0%	2	2.8	0.0
	Non-infectious	2	45.4	0	0.0	0	0.0%	2	3.4	N/A
	Total syphilis	2	45.4	2	3.2	0	0.0%	4	6.2	14.2
Great Southern	Infectious	0	0.0	0	0.0	0	N/A	0	0.0	N/A
	Non-infectious	0	0.0	1	1.0	0	0.0%	1	1.0	0.0
	Total syphilis	0	0.0	1	1.0	0	0.0%	1	1.0	0.0
Kimberley	Infectious	0	0.0	0	0.0	0	N/A	0	0.0	N/A
	Non-infectious	3	25.6	1	4.0	0	0.0%	4	10.6	6.4
	Total syphilis	3	25.6	1	4.0	0	0.0%	4	10.6	6.4
Midwest	Infectious	2	27.2	1	1.9	0	0.0%	3	5.1	14.3
	Non-infectious	2	23.1	0	0.0	0	0.0%	2	3.2	N/A
	Total syphilis	4	50.3	1	1.9	0	0.0%	5	8.3	26.5
North Metropolitan	Infectious	3	18.7	50	4.8	0	0.0%	53	5.1	3.9
	Non-infectious	9	86.4	30	2.9	0	0.0%	39	3.7	29.8
	Total syphilis	12	868.7	80	7.8	0	0.0%	92	8.8	111.4
Pilbara	Infectious	1	11.3	1	1.2	0	0.0%	2	1.9	9.4
	Non-infectious	2	25.6	1	1.3	0	0.0%	3	3.5	19.7
	Total syphilis	3	36.9	2	2.5	0	0.0%	5	5.4	14.8
South Metropolitan	Infectious	1	7.1	14	1.5	0	0.0%	15	1.6	4.7
	Non-infectious	3	16.3	28	2.9	0	0.0%	31	3.2	5.6
	Total syphilis	4	23.4	42	4.5	0	0.0%	46	4.8	5.2
South West	Infectious	0	0.0	1	0.6	0	0.0%	1	0.6	0.0
	Non-infectious	0	0.0	0	0.0	0	N/A	0	0.0	N/A
	Total syphilis	0	0.0	1	0.6	0	0.0%	1	0.6	0.0
Wheatbelt	Infectious	1	33.6	4	6.7	0	0.0%	5	7.6	5.0
	Non-infectious	0	0.0	0	0.0	0	N/A	0	0.0	N/A
	Total syphilis	1	33.6	4	6.7	0	0.0%	5	7.6	5.0
WA (Total)	Infectious	8	10.0	78	3.2	0	0.0%	86	3.4	3.1
	Non-infectious	21	32.3	62	2.5	0	0.0%	83	3.2	12.9
	Total syphilis	29	42.3	140	5.7	0	0.0%	169	6.6	7.4

Notes: Number = Number of notifications reported to the DoH
ASR = Age-standardised notification rate per 100,000 population
% (Total) = Number (Unknown)/Total number (Region and Disease status)
Rate ratio (Aboriginal:non-Aboriginal) = Aboriginal to non-Aboriginal rate ratio = ASR (Aboriginal)/ASR (non-Aboriginal)
Total syphilis = Infectious syphilis + Non-infectious syphilis
N/A = Not applicable
Calculations by Aboriginality are based on notifications of known Aboriginal status only (i.e. notifications of unknown Aboriginal status are excluded)
Column totals include cases with interstate, overseas or unknown addresses, which are not shown in the table
Notifications from Christmas Island, Curtin, Leonora, Perth and Yongah Hill Immigration Detention Centres have been excluded

Table 29 Number and ASR of syphilis notifications by Aboriginality, disease status and sex, WA, 2013

Aboriginality	Disease stage	Sex				Total		Rate ratio (Male:Female)
		Male		Female		Number	ASR	
		Number	ASR	Number	ASR			
Aboriginal	Infectious	2	4.5	6	15.9	8	10.0	0.3
	Non-infectious	14	46.0	7	19.9	21	32.3	2.3
	Total syphilis	16	50.5	13	35.8	29	42.3	1.4
non-Aboriginal	Infectious	69	5.5	9	0.8	78	3.2	6.9
	Non-infectious	50	4.0	12	1.0	62	2.5	4.0
	Total syphilis	119	9.5	21	1.8	140	5.7	5.3
WA (Total)	Infectious	71	5.5	15	1.3	86	3.4	4.2
	Non-infectious	64	4.9	19	1.5	83	3.2	3.3
	Total syphilis	135	10.4	34	2.8	169	6.6	3.7
Rate ratio (Aboriginal:non-Aboriginal)	Infectious	N/A	0.8	N/A	19.9	N/A	3.1	0.0
	Non-infectious	N/A	11.5	N/A	19.9	N/A	12.9	0.6
	Total syphilis	N/A	5.3	N/A	19.9	N/A	7.4	0.3

Notes: Number = Number of notifications reported to the DoH
ASR = Age-standardised notification rate per 100,000 population
Rate ratio (Male:Female) = ASR (Male)/ASR (Female)
Rate ratio (Aboriginal:non-Aboriginal) = Aboriginal to non-Aboriginal rate ratio = ASR (Aboriginal)/ASR (non-Aboriginal)
Total syphilis = Infectious syphilis + Non-infectious syphilis
N/A = Not applicable
Calculations by Aboriginality are based on notifications of known Aboriginal status only (i.e. notifications of unknown Aboriginal status are excluded)
Notifications from Christmas Island, Curtin, Leonora, Perth and Yongah Hill Immigration Detention Centres have been excluded

Table 30 Number and proportion of syphilis notifications by where infection was acquired, disease status and sex, WA, 2013

Where infection acquired	Disease stage	Sex				WA (Total)	
		Male		Female		Number	% Total
		Number	% Total	Number	% Total		
WA	Infectious	51	71.8%	15	100.0%	66	76.7%
	Non-infectious	38	59.4%	9	47.4%	47	56.6%
	Total syphilis	89	65.9%	24	70.6%	113	66.9%
Interstate	Infectious	5	7.0%	0	0.0%	5	5.8%
	Non-infectious	1	1.6%	1	5.3%	2	2.4%
	Total syphilis	6	4.4%	1	2.9%	7	4.1%
Overseas	Infectious	11	15.5%	0	0.0%	11	12.8%
	Non-infectious	15	23.4%	6	31.6%	21	25.3%
	Total syphilis	26	19.3%	6	17.6%	32	18.9%
Unknown	Infectious	4	5.6%	0	0.0%	4	4.7%
	Non-infectious	10	15.6%	3	15.8%	13	15.7%
	Total syphilis	14	10.4%	3	8.8%	17	10.1%
Total	Infectious	71	100.0%	15	100.0%	86	100.0%
	Non-infectious	64	100.0%	19	100.0%	83	100.0%
	Total syphilis	135	100.0%	34	100.0%	169	100.0%

Notes: Number = Number of notifications reported to the DoH
 % Total = Number of notifications (Where infection acquired and Disease status)/Total number of notifications (Sex) or overall
 Total syphilis = Infectious syphilis + Non-infectious syphilis
 N/A = Not applicable
 Notifications from Christmas Island, Curtin, Leonora, Perth and Yongah Hill Immigration Detention Centres have been excluded

Table 31 Number and crude rate of infectious syphilis notifications by state and territory, Australia, 2013

Notifications	State/Territory								AUS (Total)
	ACT	NSW	NT	QLD	SA	TAS	VIC	WA	
Number	10	597	23	323	49	18	651	82	1,753
Crude rate	2.7	8.2	9.8	7.1	3.0	3.5	11.6	3.4	7.7

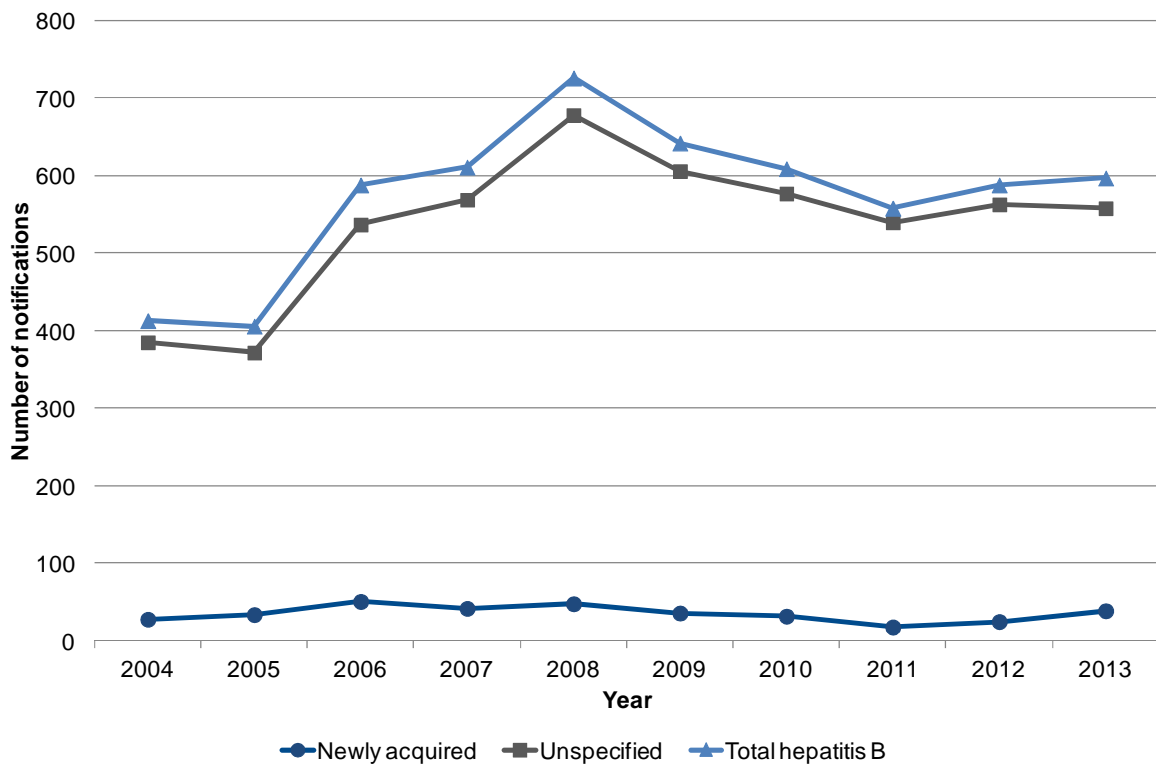
Notes: Number = Number of notifications reported to state and territory health authorities
 Crude rate = Crude rate per 100,000 population
 Data sourced from NNDSS, extracted 5 May 2014; data are provisional and subject to future revision. The follow-up and allocation of cases to infectious syphilis is highly dependent on public health follow-up which is variable between jurisdictions. Trends between infectious and non-infectious syphilis cases within jurisdictions and over time therefore need to be interpreted cautiously.

Table 32 Number and crude rate of non-infectious syphilis notifications by state and territory, Australia, 2013

Notifications	State/Territory								AUS (Total)
	ACT	NSW	NT	QLD	SA	TAS	VIC	WA	
Number	10	408	93	300	120	12	571	201	1,715
Crude rate	2.7	5.6	39.5	6.6	7.2	2.3	10.1	8.3	7.6

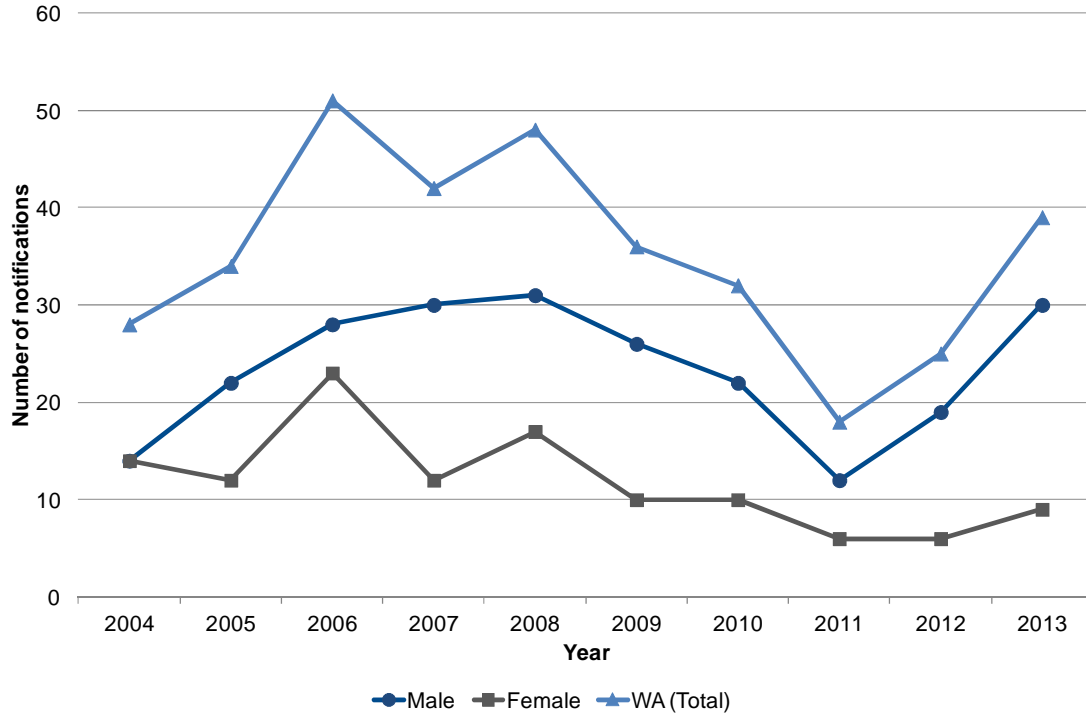
Notes: Number = Number of notifications reported to state and territory health authorities
 Crude rate = Crude rate per 100,000 population
 Data sourced from NNDSS, extracted 5 May 2014; data are provisional and subject to future revision. No non-infectious syphilis data for NSW have been included for 2010 as data duplication had not been completed at the time of reporting. The follow-up and allocation of cases to infectious syphilis is highly dependent on public health follow-up which is variable between jurisdictions. Trends between infectious and non-infectious syphilis cases within jurisdictions and over time therefore need to be interpreted cautiously.

Figure 10 Number of hepatitis B notifications by disease status, WA, 2004 to 2013



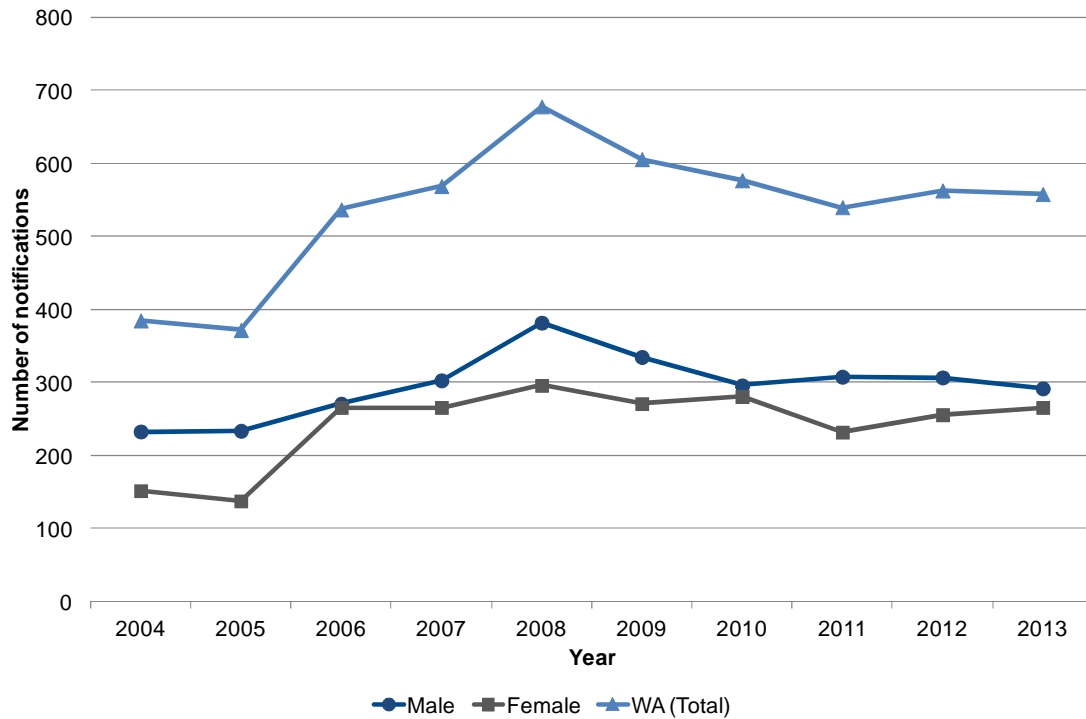
Notes: Notifications from Christmas Island, Curtin, Leonora, Perth and Yongah Hill Immigration Detention Centres have been excluded

Figure 11 Number of newly acquired hepatitis B notifications by sex, WA, 2004 to 2013



Notes: Notifications from Christmas Island, Curtin, Leonora, Perth and Yongah Hill Immigration Detention Centres have been excluded

Figure 12 Number of unspecified hepatitis B notifications by sex, WA, 2004 to 2013



Notes: Notifications from Christmas Island, Curtin, Leonora, Perth and Yongah Hill Immigration Detention Centres have been excluded

Table 33 Number, crude rate and ASR of hepatitis B notifications by region and sex, WA, 2013

Region	Disease stage	Sex						Rate ratio (Male:Female)
		Male		Female		Total		
		Number	ASR	Number	ASR	Number	ASR	
Goldfields	Newly acquired	1	3.3	1	4.5	2	3.9	0.7
	Unspecified	8	24.1	3	10.0	11	17.4	2.4
	Total hepatitis B	8	24.1	3	10.0	11	17.4	2.4
Great Southern	Newly acquired	0	0.0	0	0.0	0	0.0	N/A
	Unspecified	4	14.4	6	21.2	10	18.0	0.7
	Total hepatitis B	4	14.4	6	21.2	10	18.0	0.7
Kimberley	Newly acquired	0	0.0	1	3.7	1	1.9	0.0
	Unspecified	12	76.5	7	33.9	19	57.9	2.3
	Total hepatitis B	12	76.5	8	37.6	20	59.8	2.0
Midwest	Newly acquired	0	0.0	0	0.0	0	0.0	N/A
	Unspecified	5	16.3	2	5.9	7	10.9	2.8
	Total hepatitis B	5	16.3	2	5.9	7	10.9	2.8
North Metropolitan	Newly acquired	11	2.1	2	0.4	13	1.2	5.3
	Unspecified	106	20.2	112	21.6	218	20.9	0.9
	Total hepatitis B	117	22.3	114	22.0	231	22.1	1.0
Pilbara	Newly acquired	1	2.0	0	0.0	1	1.4	N/A
	Unspecified	11	21.7	4	10.7	15	17.6	2.0
	Total hepatitis B	12	23.7	4	10.7	16	19.0	2.2
South Metropolitan	Newly acquired	12	2.7	3	0.7	15	1.7	3.9
	Unspecified	134	29.2	115	25.2	249	27.0	1.2
	Total hepatitis B	146	31.9	118	25.9	264	28.7	1.2
South West	Newly acquired	3	3.6	1	1.2	4	2.4	3.0
	Unspecified	7	8.1	14	18.6	21	13.5	0.4
	Total hepatitis B	10	11.8	15	19.8	25	15.8	0.6
Wheatbelt	Newly acquired	2	3.8	1	4.1	3	3.9	0.9
	Unspecified	3	7.4	2	7.6	5	7.6	1.0
	Total hepatitis B	5	11.2	3	11.4	8	11.5	1.0
WA (Total)	Newly acquired	30	2.4	9	0.7	39	1.6	3.4
	Unspecified	292	23.1	266	21.7	558	22.3	1.1
	Total hepatitis B	322	25.5	275	22.4	597	23.9	1.1

Notes: Number = Number of notifications reported to the DoH
ASR = Age-standardised notification rate per 100,000 population
Rate ratio (Male:Female) = ASR (Male)/ASR (Female)
Total hepatitis B = Newly acquired hepatitis B + Unspecified hepatitis B
N/A = Not applicable
Column totals include cases with interstate, overseas or unknown addresses, which are not shown in the table
Notifications from Christmas Island, Curtin, Leonora, Perth and Yongah Hill Immigration Detention Centres have been excluded

Table 34 Number, crude rate and ASR of newly acquired hepatitis B notifications by region, WA, 2004 to 2013

Region	Rate	Year									
		2004	2005	2006	2007	2008	2009	2010	2011	2012	2013
Goldfields	Number	0	1	2	1	2	0	0	0	0	2
	Crude	0.0	1.9	3.7	1.8	3.6	0.0	0.0	0.0	0.0	3.4
	ASR	0.0	1.7	3.4	2.0	3.5	0.0	0.0	0.0	0.0	3.9
Great Southern	Number	1	0	0	0	0	0	0	1	0	0
	Crude	1.8	0.0	0.0	0.0	0.0	0.0	0.0	1.7	0.0	0.0
	ASR	1.7	0.0	0.0	0.0	0.0	0.0	0.0	2.3	0.0	0.0
Kimberley	Number	0	2	1	0	0	0	0	1	0	1
	Crude	0.0	6.3	3.1	0.0	0.0	0.0	0.0	2.7	0.0	2.5
	ASR	0.0	5.4	2.5	0.0	0.0	0.0	0.0	2.1	0.0	1.9
Midwest	Number	0	0	0	0	0	0	0	0	0	0
	Crude	0.0	0.0	0.0	0.0	0.0	0.0	0.0	0.0	0.0	0.0
	ASR	0.0	0.0	0.0	0.0	0.0	0.0	0.0	0.0	0.0	0.0
North Metropolitan	Number	8	16	24	19	17	16	15	6	10	13
	Crude	1.0	1.9	2.8	2.2	1.9	1.7	1.6	0.6	1.0	1.3
	ASR	0.9	1.9	2.8	2.1	1.8	1.7	1.6	0.6	1.0	1.2
Pilbara	Number	0	0	0	0	0	0	0	0	1	1
	Crude	0.0	0.0	0.0	0.0	0.0	0.0	0.0	0.0	1.6	1.5
	ASR	0.0	0.0	0.0	0.0	0.0	0.0	0.0	0.0	1.3	1.4
South Metropolitan	Number	16	13	22	21	27	19	17	9	13	15
	Crude	2.2	1.8	3.0	2.8	3.4	2.3	2.0	1.0	1.5	1.6
	ASR	2.2	1.8	3.1	2.8	3.3	2.3	2.1	1.0	1.5	1.7
South West	Number	0	1	0	0	1	1	0	1	1	4
	Crude	0.0	0.7	0.0	0.0	0.7	0.6	0.0	0.6	0.6	2.4
	ASR	0.0	0.8	0.0	0.0	0.8	0.7	0.0	0.7	0.6	2.4
Wheatbelt	Number	3	1	1	1	1	0	0	0	0	3
	Crude	4.1	1.4	1.4	1.4	1.3	0.0	0.0	0.0	0.0	3.9
	ASR	4.6	1.3	2.0	1.5	1.2	0.0	0.0	0.0	0.0	3.9
WA (Total)	Number	28	34	51	42	48	36	32	18	25	39
	Crude	1.4	1.7	2.5	2.0	2.2	1.6	1.4	0.8	1.0	1.6
	ASR	1.4	1.7	2.5	2.0	2.2	1.6	1.4	0.8	1.0	1.6

Notes: Number = Number of notifications reported to the DoH
 Crude = Crude notification rate per 100,000 population
 ASR = Age-standardised notification rate per 100,000 population
 Column totals include cases with interstate, overseas or unknown addresses, which are not shown in the table
 Notifications from Christmas Island, Curtin, Leonora, Perth and Yongah Hill Immigration Detention Centres have been excluded

Table 35 Number, crude rate and ASR of unspecified hepatitis B notifications by region, WA, 2004 to 2013

Region	Rate	Year									
		2004	2005	2006	2007	2008	2009	2010	2011	2012	2013
Goldfields	Number	15	16	12	19	36	23	25	26	23	11
	Crude	28.1	30.0	22.5	35.0	64.8	40.8	44.1	45.4	39.5	18.8
	ASR	26.7	29.3	20.6	37.9	67.6	44.1	45.9	42.9	37.5	17.4
Great Southern	Number	1	7	10	1	6	5	6	13	12	10
	Crude	1.8	12.3	17.3	1.7	10.0	8.2	9.7	22.0	19.7	16.5
	ASR	2.4	15.8	20.2	2.2	11.3	9.1	12.0	24.5	20.3	18.0
Kimberley	Number	41	31	35	22	21	13	16	23	21	19
	Crude	128.2	97.3	109.5	66.3	61.4	37.1	44.8	61.1	54.8	48.2
	ASR	135.5	110.1	134.5	59.5	70.0	37.7	50.1	59.9	60.8	57.9
Midwest	Number	9	9	7	13	6	9	9	12	8	7
	Crude	14.9	14.8	11.4	21.0	9.5	13.9	13.7	18.4	12.0	10.4
	ASR	15.0	16.7	11.0	21.0	10.2	13.9	14.4	18.1	11.5	10.9
North Metropolitan	Number	181	186	285	302	304	283	246	225	238	218
	Crude	22.1	22.3	33.5	34.6	33.9	30.5	26.0	23.2	23.9	21.4
	ASR	21.9	22.1	33.2	34.4	33.3	30.0	25.6	22.7	23.4	20.9
Pilbara	Number	9	9	14	10	16	10	14	8	15	15
	Crude	21.4	21.0	31.7	22.2	34.8	21.0	28.8	12.8	24.4	22.4
	ASR	19.7	24.3	31.9	19.5	34.4	21.0	27.8	11.3	27.1	17.6
South Metropolitan	Number	119	104	164	175	260	230	225	209	224	249
	Crude	16.7	14.3	22.1	23.0	33.0	28.1	26.8	24.1	25.1	27.1
	ASR	16.6	14.4	22.1	23.5	33.4	28.7	27.1	23.9	25.0	27.0
South West	Number	4	6	6	11	11	18	17	13	17	21
	Crude	3.0	4.3	4.2	7.5	7.2	11.4	10.5	8.2	10.3	12.5
	ASR	3.0	4.7	4.7	8.4	7.6	13.2	11.2	8.9	11.1	13.5
Wheatbelt	Number	3	2	1	8	5	3	13	4	3	5
	Crude	4.1	2.7	1.4	10.8	6.7	3.9	16.8	5.3	3.9	6.5
	ASR	4.8	2.4	2.0	11.7	8.4	5.0	17.9	6.0	4.3	7.6
WA (Total)	Number	385	372	537	569	678	606	577	540	563	558
	Crude	19.4	18.4	26.1	27.0	31.2	27.0	25.2	23.0	23.3	22.5
	ASR	19.3	18.4	26.2	27.2	31.2	27.1	25.2	22.6	23.2	22.3

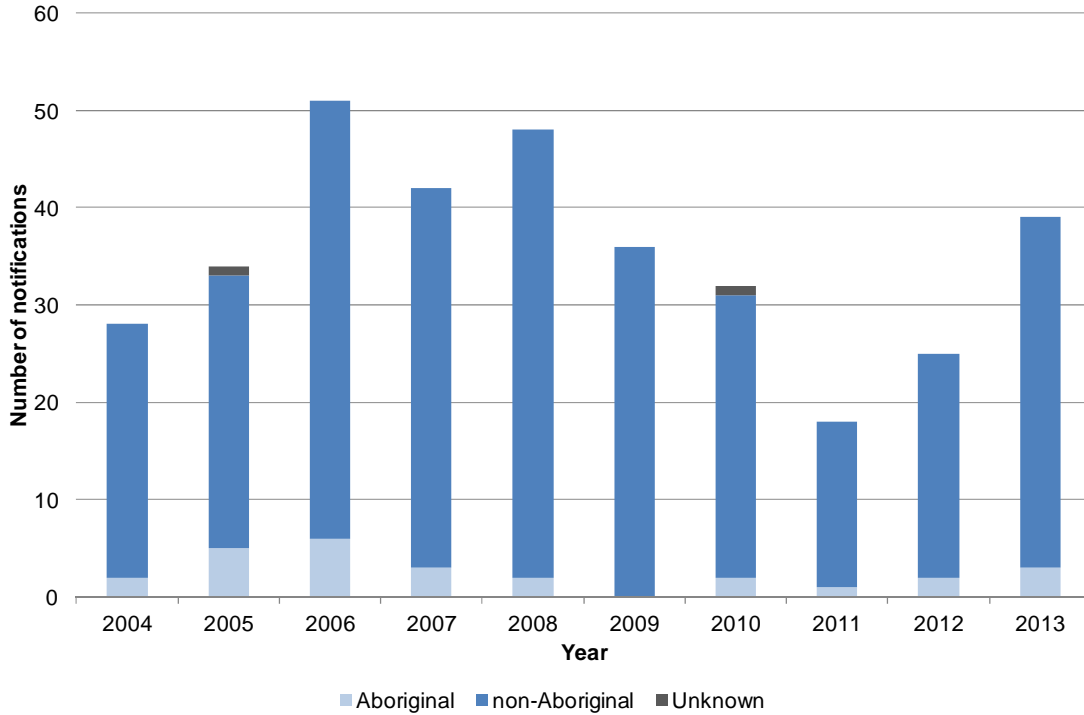
Notes: Number = Number of notifications reported to the DoH
 Crude = Crude notification rate per 100,000 population
 ASR = Age-standardised notification rate per 100,000 population
 Column totals include cases with interstate, overseas or unknown addresses, which are not shown in the table
 Notifications from Christmas Island, Curtin, Leonora, Perth and Yongah Hill Immigration Detention Centres have been excluded

Table 36 Number, crude rate and ASR of total hepatitis B notifications by region, WA, 2004 to 2013

Region	Rate	Year									
		2004	2005	2006	2007	2008	2009	2010	2011	2012	2013
Goldfields	Number	15	17	14	20	38	23	25	26	23	13
	Crude	28.1	31.9	26.2	36.8	68.4	40.8	44.1	45.4	39.5	22.2
	ASR	26.7	30.9	23.9	39.9	71.1	44.1	45.9	42.9	37.5	21.3
Great Southern	Number	2	7	10	1	6	5	6	14	12	10
	Crude	3.6	12.3	17.3	1.7	10.0	8.2	9.7	23.7	19.7	16.5
	ASR	4.1	15.8	20.2	2.2	11.3	9.1	12.0	26.8	20.3	18.0
Kimberley	Number	41	33	36	22	21	13	16	24	21	20
	Crude	128.2	103.6	112.6	66.3	61.4	37.1	44.8	63.7	54.8	50.7
	ASR	135.5	115.5	137.0	59.5	70.0	37.7	50.1	62.0	60.8	59.8
Midwest	Number	9	9	7	13	6	9	9	12	8	7
	Crude	14.9	14.8	11.4	21.0	9.5	13.9	13.7	18.4	12.0	10.4
	ASR	15.0	16.7	11.0	21.0	10.2	13.9	14.4	18.1	11.5	10.9
North Metropolitan	Number	189	202	309	321	321	299	261	231	248	231
	Crude	23.1	24.3	36.3	36.8	35.7	32.2	27.5	23.8	24.9	22.7
	ASR	22.8	24.0	36.0	36.5	35.2	31.7	27.1	23.3	24.4	22.1
Pilbara	Number	9	9	14	10	16	10	14	8	16	16
	Crude	21.4	21.0	31.7	22.2	34.8	21.0	28.8	12.8	26.1	23.9
	ASR	19.7	24.3	31.9	19.5	34.4	21.0	27.8	11.3	28.4	19.0
South Metropolitan	Number	135	117	186	196	287	249	242	218	237	264
	Crude	18.9	16.1	25.0	25.8	36.5	30.5	28.9	25.1	26.5	28.7
	ASR	18.8	16.1	25.2	26.3	36.8	31.0	29.2	25.0	26.5	28.7
South West	Number	4	7	6	11	12	19	17	14	18	25
	Crude	3.0	5.0	4.2	7.5	7.9	12.0	10.5	8.8	10.9	14.9
	ASR	3.0	5.5	4.7	8.4	8.5	13.8	11.2	9.6	11.7	15.8
Wheatbelt	Number	6	3	2	9	6	3	13	4	3	8
	Crude	8.2	4.1	2.7	12.2	8.0	3.9	16.8	5.3	3.9	10.4
	ASR	9.3	3.8	4.0	13.2	9.6	5.0	17.9	6.0	4.3	11.5
WA (Total)	Number	413	406	588	611	726	642	609	558	588	597
	Crude	20.8	20.1	28.5	29.0	33.4	28.6	26.6	23.7	24.3	24.1
	ASR	20.7	20.1	28.7	29.2	33.4	28.7	26.6	23.4	24.2	23.9

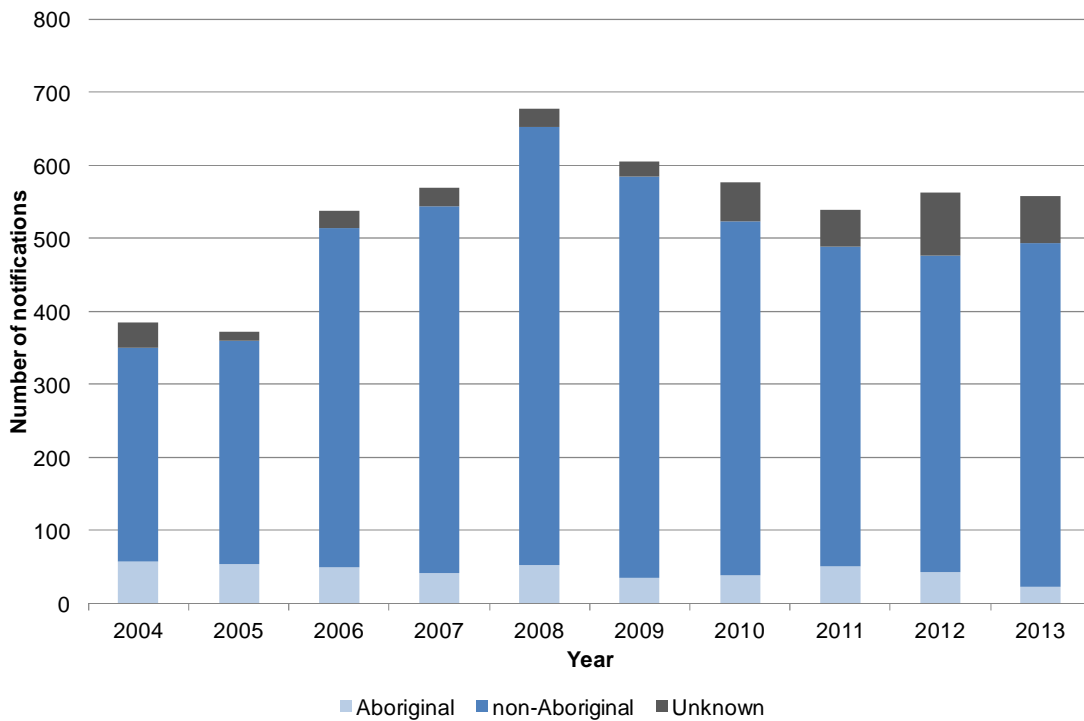
Notes: Total hepatitis B = Newly acquired hepatitis B + Unspecified hepatitis B
 Number = Number of notifications reported to the DoH
 Crude = Crude notification rate per 100,000 population
 ASR = Age-standardised notification rate per 100,000 population
 Column totals include cases with interstate, overseas or unknown addresses, which are not shown in the table
 Notifications from Christmas Island, Curtin, Leonora, Perth and Yongah Hill Immigration Detention Centres have been excluded

Figure 13 Number of newly acquired hepatitis B notifications by Aboriginality, WA, 2004 to 2013



Notes: Notifications from Christmas Island, Curtin, Leonora, Perth and Yongah Hill Immigration Detention Centres have been excluded

Figure 14 Number of unspecified hepatitis B notifications by Aboriginality, WA, 2004 to 2013



Notes: Notifications from Christmas Island, Curtin, Leonora, Perth and Yongah Hill Immigration Detention Centres have been excluded

Table 37 Number and ASR of hepatitis B notifications by region, disease status and Aboriginality, WA, 2013

Region	Disease stage	Aboriginality						Total		Rate ratio (Aboriginal: non-Aboriginal)
		Aboriginal		non-Aboriginal		Unknown		Number	ASR	
		Number	ASR	Number	ASR	Number	% Total			
Goldfields	Newly acquired	1	38.6	1	1.9	0	0.0%	2	3.9	20.3
	Unspecified	5	81.0	6	10.3	0	0.0%	11	17.4	7.9
	Total hepatitis B	6	119.6	7	12.2	0	0.0%	11	17.4	9.8
Great Southern	Newly acquired	0	0.0	0	0.0	0	N/A	0	0.0	N/A
	Unspecified	1	54.2	9	17.2	0	0.0%	10	18.0	3.2
	Total hepatitis B	1	54.2	9	17.2	0	0.0%	10	18.0	3.2
Kimberley	Newly acquired	1	3.7	0	0.0	0	0.0%	1	1.9	N/A
	Unspecified	11	87.9	8	26.7	0	0.0%	19	57.9	3.3
	Total hepatitis B	12	91.6	8	26.7	0	0.0%	20	59.8	3.4
Midwest	Newly acquired	0	0.0	0	0.0	0	N/A	0	0.0	N/A
	Unspecified	1	14.2	6	10.1	0	0.0%	7	10.9	1.4
	Total hepatitis B	1	14.2	6	10.1	0	0.0%	7	10.9	1.4
North Metropolitan	Newly acquired	1	8.9	12	1.2	0	0.0%	13	1.2	7.4
	Unspecified	0	0.0	214	20.8	4	1.8%	218	20.9	0.0
	Total hepatitis B	1	8.9	226	21.9	4	1.7%	231	22.1	0.4
Pilbara	Newly acquired	0	0.0	1	1.5	0	0.0%	1	1.4	0.0
	Unspecified	5	67.2	8	8.9	2	13.3%	15	17.6	7.6
	Total hepatitis B	5	67.2	9	10.4	2	12.5%	16	19.0	6.5
South Metropolitan	Newly acquired	0	0.0	15	1.7	0	0.0%	15	1.7	0.0
	Unspecified	0	0.0	190	21.0	59	23.7%	249	27.0	0.0
	Total hepatitis B	0	0.0	205	22.7	59	22.3%	264	28.7	0.0
South West	Newly acquired	0	0.0	4	2.4	0	0.0%	4	2.4	0.0
	Unspecified	0	0.0	21	13.8	0	0.0%	21	13.5	0.0
	Total hepatitis B	0	0.0	25	16.2	0	0.0%	25	15.8	0.0
Wheatbelt	Newly acquired	0	0.0	3	4.0	0	0.0%	3	3.9	0.0
	Unspecified	0	0.0	5	8.0	0	0.0%	5	7.6	0.0
	Total hepatitis B	0	0.0	8	12.0	0	0.0%	8	11.5	0.0
WA (Total)	Newly acquired	3	5.6	36	1.5	0	0.0%	39	1.6	3.7
	Unspecified	23	40.4	470	19.3	65	11.6%	558	22.3	2.1
	Total hepatitis B	26	46	506	20.8	65	10.9%	597	23.9	2.2

Notes: Number = Number of notifications reported to the DoH
ASR = Age-standardised notification rate per 100,000 population
% (Total) = Number (Unknown)/Total number (Region and Disease status)
Rate ratio (Aboriginal:non-Aboriginal) = Aboriginal to non-Aboriginal rate ratio = ASR (Aboriginal)/ASR (non-Aboriginal)
Total hepatitis B = Newly acquired hepatitis B + Unspecified hepatitis B
N/A = Not applicable
Calculations by Aboriginality are based on notifications of known Aboriginal status only (i.e. notifications of unknown Aboriginal status are excluded)
Column totals include cases with interstate, overseas or unknown addresses, which are not shown in the table
Notifications from Christmas Island, Curtin, Leonora, Perth and Yongah Hill Immigration Detention Centres have been excluded

Table 38 Number and ASR of hepatitis B notifications by Aboriginality, disease status and sex, WA, 2013

Aboriginality	Disease stage	Sex				Total		Rate ratio (Male:Female)
		Male		Female		Number	ASR	
		Number	ASR	Number	ASR			
Aboriginal	Newly acquired	0	0.0	3	10.6	3	5.6	0.0
	Unspecified	17	67.1	6	17.2	23	40.4	3.9
	Total hepatitis B	17	67.1	9	27.8	26	46.0	2.4
non-Aboriginal	Newly acquired	30	2.5	6	0.5	36	1.5	5.0
	Unspecified	233	19.0	237	19.9	470	19.3	1.0
	Total hepatitis B	263	21.4	243	20.4	506	20.8	1.0
WA (Total)	Newly acquired	30	2.4	9	0.7	39	1.6	3.4
	Unspecified	292	23.1	266	21.7	558	22.3	1.1
	Total hepatitis B	322	25.5	275	22.4	597	23.9	1.1
Rate ratio (Aboriginal:non-Aboriginal)	Newly acquired	N/A	0.0	N/A	21.2	N/A	3.7	0.0
	Unspecified	N/A	3.5	N/A	0.9	N/A	2.1	4.1
	Total hepatitis B	N/A	3.1	N/A	1.4	N/A	2.2	2.3

Notes: Number = Number of notifications reported to the DoH
 ASR = Age-standardised notification rate per 100,000 population
 Rate ratio (Male:Female) = ASR (Male)/ASR (Female)
 Total hepatitis B = Newly acquired hepatitis B + Unspecified hepatitis B
 N/A = Not applicable
 Calculations by Aboriginality are based on notifications of known Aboriginal status only (i.e. notifications of unknown Aboriginal status are excluded)
 Notifications from Christmas Island, Curtin, Leonora, Perth and Yongah Hill Immigration Detention Centres have been excluded

Table 39 Number and proportion of hepatitis B notifications by where infection was acquired, disease status and sex, WA, 2013

Where infection acquired	Disease stage	Sex				WA (Total)	
		Male		Female		Number	% Total
		Number	% Total	Number	% Total		
WA	Newly acquired	20	66.7%	5	55.6%	25	64.1%
	Unspecified	38	13.0%	15	5.6%	53	9.5%
	Total hepatitis B	58	18.0%	20	7.3%	78	13.1%
Interstate	Newly acquired	0	0.0%	1	11.1%	1	2.6%
	Unspecified	3	1.0%	3	1.1%	6	1.1%
	Total hepatitis B	3	0.9%	4	1.5%	7	1.2%
Overseas	Newly acquired	6	20.0%	1	11.1%	7	17.9%
	Unspecified	113	38.7%	129	48.5%	242	43.4%
	Total hepatitis B	119	37.0%	130	47.3%	249	41.7%
Unknown	Newly acquired	4	13.3%	2	22.2%	6	15.4%
	Unspecified	138	100.0%	119	44.7%	257	46.1%
	Total hepatitis B	142	44.1%	121	44.0%	263	44.1%
Total	Newly acquired	30	100.0%	9	100.0%	39	100.0%
	Unspecified	292	100.0%	266	100.0%	558	100.0%
	Total hepatitis B	322	100.0%	275	100.0%	597	100.0%

Notes: Number = Number of notifications reported to the DoH
 % Total = Number of notifications (Where infection acquired and Disease status)/Total number of notifications (Sex) or overall
 Total hepatitis B = Newly acquired hepatitis B + Unspecified hepatitis B
 N/A = Not applicable
 Notifications from Christmas Island, Curtin, Leonora, Perth and Yongah Hill Immigration Detention Centres have been excluded

Table 40 Number and crude rate of newly acquired hepatitis B notifications by state and territory, Australia, 2013

Notifications	State/Territory								AUS (Total)
	ACT	NSW	NT	QLD	SA	TAS	VIC	WA	
Number	4	33	6	42	7	3	34	39	168
Crude rate	1.1	0.5	2.6	0.9	0.4	0.6	0.6	1.6	0.7

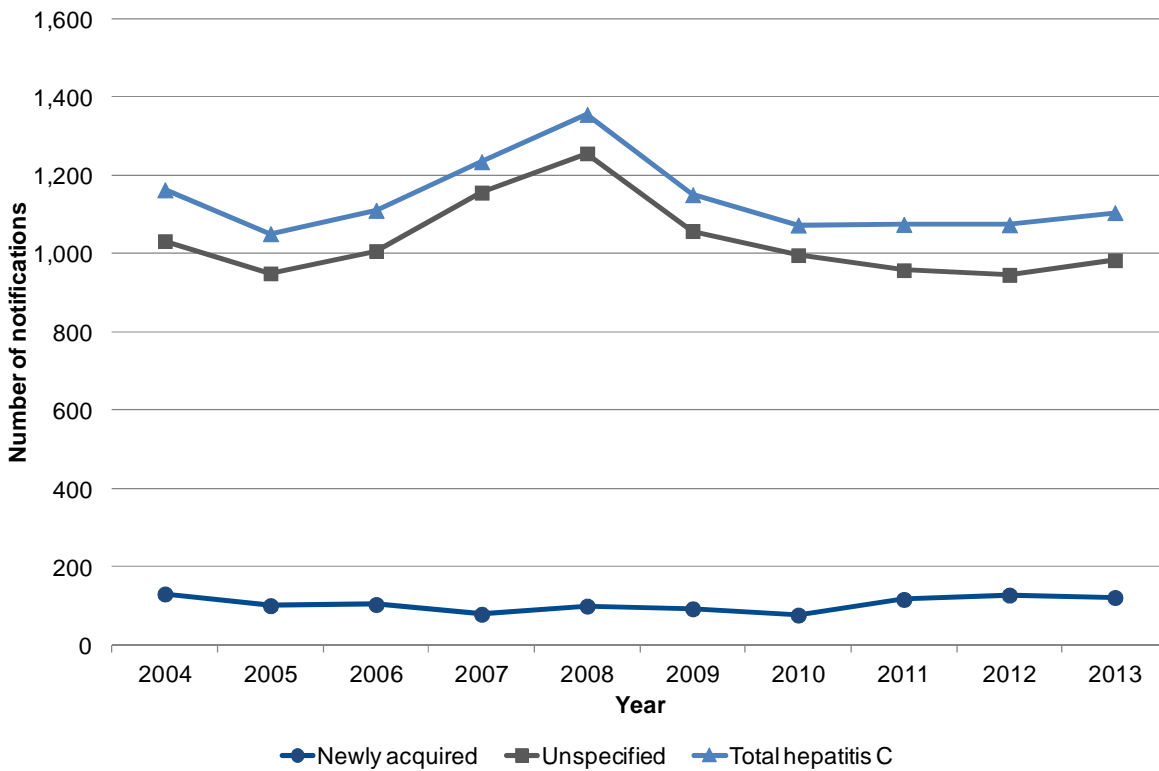
Notes: Number = Number of notifications reported to state and territory health authorities
 Crude rate = Crude rate per 100,000 population
 Data sourced from NNDSS, extracted 5 May 2014; data are provisional and subject to future revision. The follow-up and allocation of cases to newly acquired hepatitis B is highly dependent on public health follow-up which is variable between jurisdictions. Trends between newly acquired and unspecified hepatitis B cases within jurisdictions and over time therefore need to be interpreted cautiously.

Table 41 Number and crude rate of unspecified hepatitis B notifications by state and territory, Australia, 2013

Notifications	State/Territory								AUS (Total)
	ACT	NSW	NT	QLD	SA	TAS	VIC	WA	
Number	109	2,510	339	906	318	55	1,848	945	7,030
Crude rate	29.1	34.4	144.1	19.8	19.2	10.7	32.8	38.8	31.0

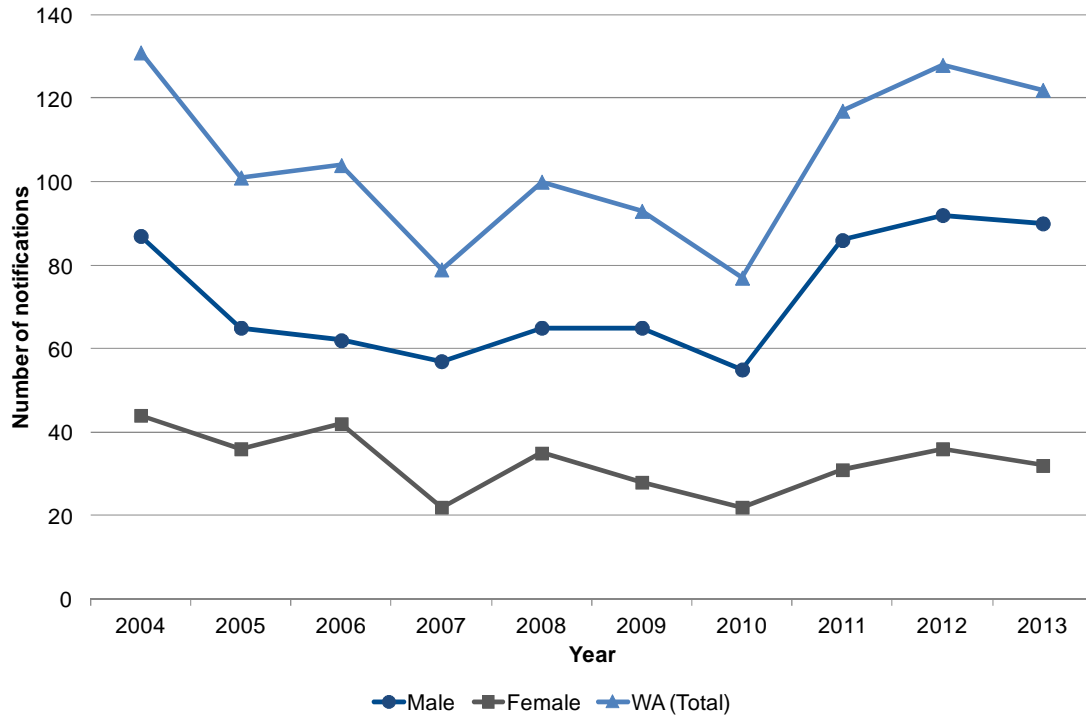
Notes: Number = Number of notifications reported to state and territory health authorities
 Crude rate = Crude rate per 100,000 population
 Data sourced from NNDSS, extracted 5 May 2014; data are provisional and subject to future revision. The follow-up and allocation of cases to newly acquired hepatitis B is highly dependent on public health follow-up which is variable between jurisdictions. Trends between newly acquired and unspecified hepatitis B cases within jurisdictions and over time therefore need to be interpreted cautiously.

Figure 15 Number of hepatitis C notifications by disease status, WA, 2004 to 2013



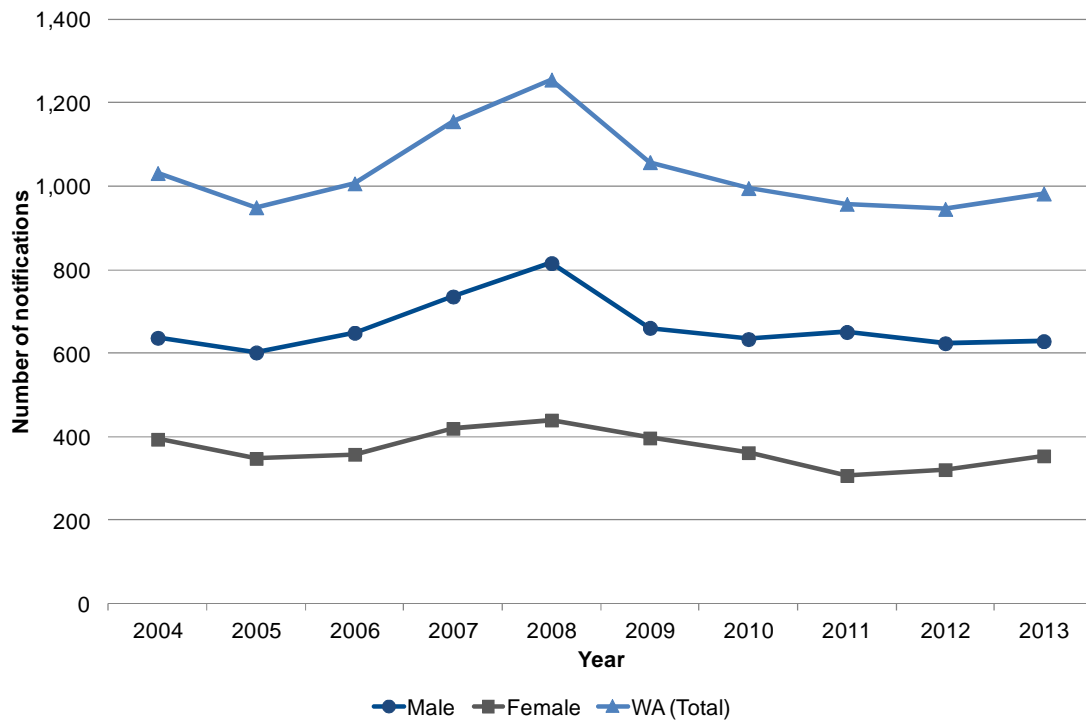
Notes: Notifications from Christmas Island, Curtin, Leonora, Perth and Yongah Hill Immigration Detention Centres have been excluded

Figure 16 Number of newly acquired hepatitis C notifications by sex, WA, 2004 to 2013



Notes: Notifications from Christmas Island, Curtin, Leonora, Perth and Yongah Hill Immigration Detention Centres have been excluded

Figure 17 Number of unspecified hepatitis C notifications by sex, WA, 2004 to 2013



Notes: Notifications from Christmas Island, Curtin, Leonora, Perth and Yongah Hill Immigration Detention Centres have been excluded

Table 42 Number and ASR of hepatitis C notifications by region and sex, WA, 2013

Region	Disease stage	Sex						Rate ratio (Male:Female)
		Male		Female		Total		
		Number	ASR	Number	ASR	Number	ASR	
Goldfields	Newly acquired	0	0.0	0	0.0	0	0.0	N/A
	Unspecified	23	69.2	11	40.6	34	56.4	1.7
	Total hepatitis C	23	69.2	11	40.6	34	56.4	1.7
Great Southern	Newly acquired	10	42.9	1	3.5	11	23.5	12.3
	Unspecified	19	74.3	9	31.0	28	52.1	2.4
	Total hepatitis C	29	117.2	10	34.5	39	75.6	3.4
Kimberley	Newly acquired	0	0.0	1	5.7	1	2.7	0.0
	Unspecified	17	80.0	5	26.6	22	55.3	3.0
	Total hepatitis C	17	80.0	6	32.4	23	58.0	2.5
Midwest	Newly acquired	2	6.1	2	7.0	4	6.7	0.9
	Unspecified	19	57.9	12	37.9	31	48.2	1.5
	Total hepatitis C	21	64.0	14	44.9	35	54.9	1.4
North Metropolitan	Newly acquired	35	6.5	17	3.2	52	4.9	2.0
	Unspecified	235	45.5	147	28.4	382	36.9	1.6
	Total hepatitis C	270	52.0	164	31.6	434	41.8	1.6
Pilbara	Newly acquired	2	5.5	0	0.0	2	3.1	N/A
	Unspecified	16	32.2	8	32.6	24	32.1	1.0
	Total hepatitis C	18	37.8	8	32.6	26	35.2	1.2
South Metropolitan	Newly acquired	34	6.8	10	2.2	44	4.6	3.1
	Unspecified	243	52.1	141	30.9	384	41.6	1.7
	Total hepatitis C	277	58.9	151	33.0	428	46.1	1.8
South West	Newly acquired	5	6.3	1	1.2	6	3.8	5.3
	Unspecified	32	40.0	14	17.6	46	28.8	2.3
	Total hepatitis C	37	46.2	15	18.8	52	32.5	2.5
Wheatbelt	Newly acquired	2	6.6	0	0.0	2	3.3	N/A
	Unspecified	13	35.0	4	11.9	17	23.6	2.9
	Total hepatitis C	15	41.7	4	11.9	19	26.9	3.5
WA (Total)	Newly acquired	90	6.8	32	2.6	122	4.8	2.6
	Unspecified	629	49.5	354	28.9	983	39.4	1.7
	Total hepatitis C	719	56.3	386	31.5	1105	44.2	1.8

Notes: Number = Number of notifications reported to the DoH
ASR = Age-standardised notification rate per 100,000 population
Rate ratio (Male:Female) = ASR (Male)/ASR (Female)
Total hepatitis C = Newly acquired hepatitis C + Unspecified hepatitis C
N/A = Not applicable
Column totals include cases with interstate, overseas or unknown addresses, which are not shown in the table
Notifications from Christmas Island, Curtin, Leonora, Perth and Yongah Hill Immigration Detention Centres have been excluded

Table 43 Number, crude rate and ASR of newly acquired hepatitis C notifications by region, WA, 2004 to 2013

Region	Rate	Year									
		2004	2005	2006	2007	2008	2009	2010	2011	2012	2013
Goldfields	Number	4	2	3	0	4	5	2	5	2	0
	Crude	7.5	3.8	5.6	0.0	7.2	8.9	3.5	8.7	3.4	0.0
	ASR	6.8	3.3	5.3	0.0	6.7	8.2	3.1	8.0	3.4	0.0
Great Southern	Number	6	5	6	2	3	6	3	1	11	11
	Crude	10.7	8.8	10.4	3.4	5.0	9.8	4.9	1.7	18.0	18.2
	ASR	13.3	11.1	12.3	4.2	6.7	12.6	6.0	2.2	23.8	23.5
Kimberley	Number	2	0	2	0	1	1	1	1	1	1
	Crude	6.3	0.0	6.3	0.0	2.9	2.9	2.8	2.7	2.6	2.5
	ASR	5.1	0.0	5.8	0.0	2.5	2.1	2.3	2.5	1.8	2.7
Midwest	Number	4	6	5	0	4	3	2	5	3	4
	Crude	6.6	9.9	8.1	0.0	6.3	4.6	3.0	7.7	4.5	5.9
	ASR	7.1	11.1	8.9	0.0	7.1	5.3	3.3	8.2	4.9	6.7
North Metropolitan	Number	40	38	40	36	48	43	39	52	59	52
	Crude	4.9	4.6	4.7	4.1	5.3	4.6	4.1	5.4	5.9	5.1
	ASR	4.8	4.5	4.6	4.1	5.2	4.4	3.8	5.1	5.5	4.9
Pilbara	Number	3	2	3	0	0	2	0	2	3	2
	Crude	7.1	4.7	6.8	0.0	0.0	4.2	0.0	3.2	4.9	3.0
	ASR	6.7	4.0	5.7	0.0	0.0	3.1	0.0	2.8	3.8	3.1
South Metropolitan	Number	58	34	37	38	34	27	23	43	40	44
	Crude	8.1	4.7	5.0	5.0	4.3	3.3	2.7	5.0	4.5	4.8
	ASR	8.3	4.7	4.9	4.9	4.3	3.2	2.8	4.7	4.2	4.6
South West	Number	7	9	5	3	2	4	6	7	6	6
	Crude	5.2	6.5	3.5	2.0	1.3	2.5	3.7	4.4	3.6	3.6
	ASR	6.4	7.8	4.2	2.3	1.7	2.8	4.3	5.1	4.1	3.8
Wheatbelt	Number	4	4	3	0	2	2	1	1	2	2
	Crude	5.5	5.4	4.1	0.0	2.7	2.6	1.3	1.3	2.6	2.6
	ASR	6.9	7.2	5.4	0.0	3.3	3.4	1.8	1.8	3.0	3.3
WA (Total)	Number	131	101	104	79	100	93	77	117	128	122
	Crude	6.6	5.0	5.0	3.8	4.6	4.1	3.4	5.0	5.3	4.9
	ASR	6.7	5.1	5.1	3.8	4.6	4.0	3.3	4.8	5.1	4.8

Notes: Number = Number of notifications reported to the DoH
 Crude = Crude notification rate per 100,000 population
 ASR = Age-standardised notification rate per 100,000 population
 Column totals include cases with interstate, overseas or unknown addresses, which are not shown in the table
 Notifications from Christmas Island, Curtin, Leonora, Perth and Yongah Hill Immigration Detention Centres have been excluded

Table 44 Number, crude rate and ASR of unspecified hepatitis C notifications by region, WA, 2004 to 2013

Region	Rate	Year									
		2004	2005	2006	2007	2008	2009	2010	2011	2012	2013
Goldfields	Number	40	26	25	25	36	34	51	43	38	34
	Crude	74.8	48.8	46.8	46.0	64.8	60.4	89.9	75.0	65.3	58.0
	ASR	71.0	46.0	43.5	43.6	63.0	56.6	86.4	71.4	62.8	56.4
Great Southern	Number	31	28	17	25	17	28	27	32	35	28
	Crude	55.2	49.2	29.4	42.7	28.4	45.7	43.7	54.2	57.4	46.3
	ASR	61.9	56.3	32.7	49.2	32.8	50.5	46.8	60.4	64.3	52.1
Kimberley	Number	18	26	27	31	24	31	31	18	20	22
	Crude	56.3	81.6	84.5	93.5	70.2	88.5	86.8	47.8	52.2	55.8
	ASR	55.6	76.7	82.1	89.1	66.1	86.8	83.4	46.0	49.7	55.3
Midwest	Number	31	34	32	33	36	45	24	31	44	31
	Crude	51.5	55.9	52.1	53.2	56.8	69.4	36.6	47.5	65.9	46.1
	ASR	54.4	58.5	55.7	56.3	58.7	70.8	37.2	49.9	67.8	48.2
North Metropolitan	Number	385	384	444	418	451	357	344	353	318	382
	Crude	47.1	46.1	52.1	48.0	50.2	38.4	36.3	36.4	31.9	37.5
	ASR	46.3	45.4	51.2	47.9	49.9	37.8	35.7	35.8	31.4	36.9
Pilbara	Number	29	12	12	26	43	24	22	26	17	24
	Crude	69.1	28.1	27.2	57.7	93.5	50.5	45.3	41.4	27.7	35.8
	ASR	57.7	22.8	24.8	57.6	85.3	47.0	42.7	35.6	25.2	32.1
South Metropolitan	Number	369	329	342	406	466	396	351	346	360	384
	Crude	51.8	45.3	46.1	53.4	59.2	48.5	41.9	39.9	40.3	41.8
	ASR	52.7	46.2	46.8	54.6	60.2	49.1	42.5	39.7	40.4	41.6
South West	Number	67	63	61	89	83	76	78	68	79	46
	Crude	49.7	45.3	42.7	60.6	54.6	48.2	48.1	42.9	47.7	27.5
	ASR	52.3	48.4	46.3	64.9	57.1	50.0	50.2	45.9	49.3	28.8
Wheatbelt	Number	29	25	17	30	37	23	28	16	19	17
	Crude	39.5	34.0	23.1	40.5	49.3	30.1	36.3	21.3	24.7	22.1
	ASR	43.9	36.9	26.9	46.2	56.9	33.7	41.3	24.8	29.3	23.6
WA (Total)	Number	1,032	950	1,007	1,156	1,256	1,058	996	958	946	983
	Crude	52.1	47.1	48.9	54.9	57.8	47.1	43.4	40.7	39.1	39.7
	ASR	52.2	47.2	49.1	55.5	58.1	47.0	43.5	40.4	38.8	39.4

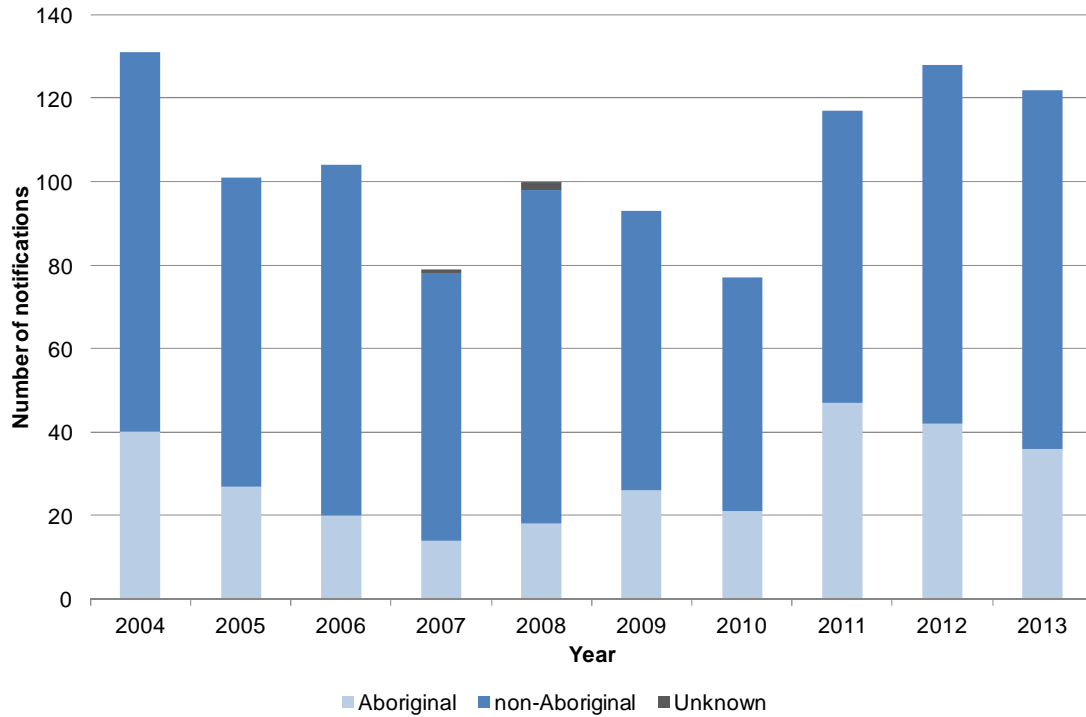
Notes: Number = Number of notifications reported to the DoH
 Crude = Crude notification rate per 100,000 population
 ASR = Age-standardised notification rate per 100,000 population
 Column totals include cases with interstate, overseas or unknown addresses, which are not shown in the table
 Notifications from Christmas Island, Curtin, Leonora, Perth and Yongah Hill Immigration Detention Centres have been excluded

Table 45 Number, crude rate and ASR of total hepatitis C notifications by region, WA, 2004 to 2013

Region	Rate	Year									
		2004	2005	2006	2007	2008	2009	2010	2011	2012	2013
Goldfields	Number	44	28	28	25	40	39	53	48	40	34
	Crude	82.3	52.6	52.4	46.0	72.0	69.2	93.4	83.8	68.8	58.0
	ASR	77.8	49.3	48.8	43.6	69.6	64.9	89.5	79.4	66.2	56.4
Great Southern	Number	37	33	23	27	20	34	30	33	46	39
	Crude	65.9	58.0	39.8	46.1	33.4	55.5	48.6	55.9	75.5	64.4
	ASR	75.2	67.4	45.0	53.4	39.4	63.1	52.8	62.6	88.1	75.6
Kimberley	Number	20	26	29	31	25	32	32	19	21	23
	Crude	62.5	81.6	90.7	93.5	73.1	91.4	89.6	50.4	54.8	58.3
	ASR	60.7	76.7	87.9	89.1	68.7	88.9	85.6	48.5	51.5	58.0
Midwest	Number	35	40	37	33	40	48	26	36	47	35
	Crude	58.1	65.8	60.2	53.2	63.1	74.0	39.6	55.2	70.4	52.0
	ASR	61.5	69.6	64.7	56.3	65.9	76.1	40.5	58.1	72.7	54.9
North Metropolitan	Number	425	422	484	454	499	400	383	405	377	434
	Crude	52.0	50.7	56.8	52.1	55.6	43.1	40.4	41.8	37.8	42.6
	ASR	51.1	49.9	55.8	51.9	55.1	42.1	39.5	40.9	37.0	41.8
Pilbara	Number	32	14	15	26	43	26	22	28	20	26
	Crude	76.2	32.7	34.0	57.7	93.5	54.7	45.3	44.6	32.6	38.8
	ASR	64.4	26.8	30.5	57.6	85.3	50.2	42.7	38.4	29.0	35.2
South Metropolitan	Number	427	363	379	444	500	423	374	389	400	428
	Crude	59.9	50.0	51.0	58.4	63.5	51.8	44.6	44.8	44.8	46.5
	ASR	61.0	50.9	51.8	59.5	64.6	52.3	45.4	44.4	44.6	46.1
South West	Number	74	72	66	92	85	80	84	75	85	52
	Crude	54.9	51.8	46.2	62.7	55.9	50.7	51.8	47.3	51.3	31.0
	ASR	58.8	56.2	50.5	67.2	58.8	52.7	54.5	51.0	53.3	32.5
Wheatbelt	Number	33	29	20	30	39	25	29	17	21	19
	Crude	45.0	39.4	27.2	40.5	52.0	32.7	37.6	22.6	27.3	24.7
	ASR	50.8	44.1	32.4	46.2	60.2	37.1	43.2	26.5	32.3	26.9
WA (Total)	Number	1,163	1,051	1,111	1,235	1,356	1,151	1,073	1,075	1,074	1,105
	Crude	58.7	52.1	53.9	58.6	62.5	51.3	46.8	45.7	44.4	44.6
	ASR	58.8	52.3	54.1	59.3	62.8	51.1	46.8	45.2	43.9	44.2

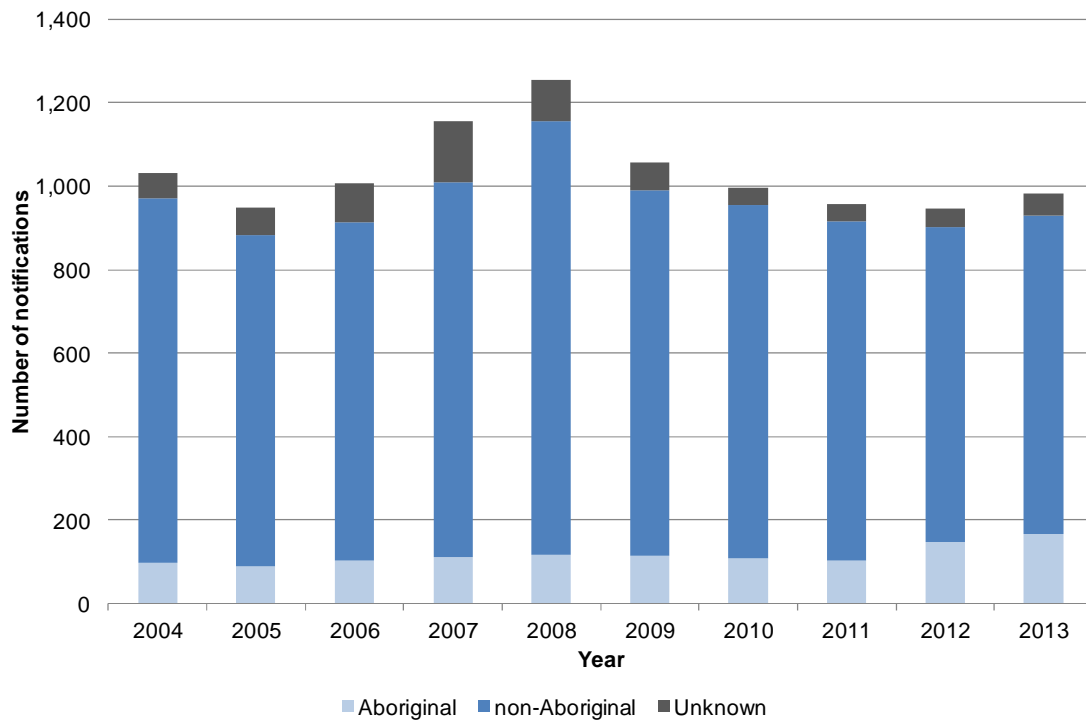
Notes: Total hepatitis C = Newly acquired hepatitis C + Unspecified hepatitis C
 Number = Number of notifications reported to the DoH
 Crude = Crude notification rate per 100,000 population
 ASR = Age-standardised notification rate per 100,000 population
 Column totals include cases with interstate, overseas or unknown addresses, which are not shown in the table
 Notifications from Christmas Island, Curtin, Leonora, Perth and Yongah Hill Immigration Detention Centres have been excluded

Figure 18 Number of newly acquired hepatitis C notifications by Aboriginality, WA, 2004 to 2013



Notes: Notifications from Christmas Island, Curtin, Leonora, Perth and Yongah Hill Immigration Detention Centres have been excluded

Figure 19 Number of unspecified hepatitis C notifications by Aboriginality, WA, 2004 to 2013



Notes: Notifications from Christmas Island, Curtin, Leonora, Perth and Yongah Hill Immigration Detention Centres have been excluded

Table 46 Number and ASR of hepatitis C notifications by region, disease status and Aboriginality, WA, 2013

Region	Disease stage	Aboriginality						Total		Rate ratio (Aboriginal: non-Aboriginal)
		Aboriginal		non-Aboriginal		Unknown		Number	ASR	
		Number	ASR	Number	ASR	Number	% Total			
Goldfields	Newly acquired	0	0.0	0	0.0	0	N/A	0	0.0	N/A
	Unspecified	7	135.1	26	46.8	1	2.9%	34	56.4	2.9
	Total hepatitis C	7	135.1	26	46.8	1	2.9%	34	56.4	2.9
Great Southern	Newly acquired	7	263.6	4	8.9	0	0.0%	11	23.5	29.6
	Unspecified	6	357.6	22	41.5	0	0.0%	28	52.1	8.6
	Total hepatitis C	13	621.2	26	50.5	0	0.0%	39	75.6	12.3
Kimberley	Newly acquired	1	8.1	0	0.0	0	0.0%	1	2.7	N/A
	Unspecified	3	17.4	19	71.7	0	0.0%	22	55.3	0.2
	Total hepatitis C	4	25.5	19	71.7	0	0.0%	23	58.0	0.4
Midwest	Newly acquired	1	14.2	3	5.6	0	0.0%	4	6.7	2.5
	Unspecified	11	169.7	19	31.9	1	3.2%	31	48.2	5.3
	Total hepatitis C	12	183.9	22	37.5	1	2.9%	35	54.9	4.9
North Metropolitan	Newly acquired	11	66.6	41	3.9	0	0.0%	52	4.9	17.1
	Unspecified	51	346.0	318	31.2	13	3.4%	382	36.9	11.1
	Total hepatitis C	62	412.6	359	35.1	13	3.0%	434	41.8	11.8
Pilbara	Newly acquired	2	19.6	0	0.0	0	0.0%	2	3.1	N/A
	Unspecified	5	68.5	19	28.7	0	0.0%	24	32.1	2.4
	Total hepatitis C	7	88.2	19	28.7	0	0.0%	26	35.2	3.1
South Metropolitan	Newly acquired	14	70.4	30	3.2	0	0.0%	44	4.6	22.0
	Unspecified	74	434.3	283	31.3	27	7.0%	384	41.6	13.9
	Total hepatitis C	88	504.7	313	34.5	27	6.3%	428	46.1	14.6
South West	Newly acquired	0	0.0	6	3.9	0	0.0%	6	3.8	0.0
	Unspecified	5	182.9	37	23.6	4	8.7%	46	28.8	7.8
	Total hepatitis C	5	182.9	43	27.4	4	7.7%	52	32.5	6.7
Wheatbelt	Newly acquired	0	0.0	2	3.5	0	0.0%	2	3.3	0.0
	Unspecified	3	65.8	14	19.6	0	0.0%	17	23.6	3.4
	Total hepatitis C	3	65.8	16	23.0	0	0.0%	19	26.9	2.9
WA (Total)	Newly acquired	36	39.6	86	3.5	0	0.0%	122	4.8	11.3
	Unspecified	167	213.9	764	31.5	52	5.3%	983	39.4	6.8
	Total hepatitis C	203	253.5	850	34.9	52	4.7%	1105	44.2	7.3

Notes: Number = Number of notifications reported to the DoH
ASR = Age-standardised notification rate per 100,000 population
% (Total) = Number (Unknown)/Total number (Region and Disease status)
Rate ratio (Aboriginal:non-Aboriginal) = Aboriginal to non-Aboriginal rate ratio = ASR (Aboriginal)/ASR (non-Aboriginal)
Total hepatitis C = Newly acquired hepatitis C + Unspecified hepatitis C
N/A = Not applicable
Calculations by Aboriginality are based on notifications of known Aboriginal status only (i.e. notifications of unknown Aboriginal status are excluded)
Column totals include cases with interstate, overseas or unknown addresses, which are not shown in the table
Notifications from Christmas Island, Curtin, Leonora, Perth and Yongah Hill Immigration Detention Centres have been excluded

Table 47 Number and ASR of hepatitis C notifications by Aboriginality, disease status and sex, WA, 2013

Aboriginality	Disease stage	Sex				Total		Rate ratio (Male:Female)
		Male		Female		Number	ASR	
		Number	ASR	Number	ASR			
Aboriginal	Newly acquired	30	61.5	6	16.6	36	39.6	3.7
	Unspecified	102	245.0	65	180.4	167	213.9	1.4
	Total hepatitis C	132	306.6	71	197.0	203	253.5	1.6
non-Aboriginal	Newly acquired	60	4.7	26	2.2	86	3.5	2.1
	Unspecified	492	39.9	272	22.8	764	31.5	1.8
	Total hepatitis C	552	44.6	298	24.9	850	34.9	1.8
WA (Total)	Newly acquired	90	6.8	32	2.6	122	4.8	2.6
	Unspecified	629	49.5	354	28.9	983	39.4	1.7
	Total hepatitis C	719	56.3	386	31.5	1,105	44.2	1.8
Rate ratio (Aboriginal:non-Aboriginal)	Newly acquired	N/A	13.1	N/A	7.5	N/A	11.3	1.7
	Unspecified	N/A	6.1	N/A	7.9	N/A	6.8	0.8
	Total hepatitis C	N/A	6.9	N/A	7.9	N/A	7.3	0.9

Notes: Number = Number of notifications reported to the DoH
 ASR = Age-standardised notification rate per 100,000 population
 Rate ratio (Male:Female) = ASR (Male)/ASR (Female)
 Rate ratio (Aboriginal:non-Aboriginal) = Aboriginal to non-Aboriginal rate ratio = ASR (Aboriginal)/ASR (non-Aboriginal)
 Total hepatitis C = Newly acquired hepatitis C + Unspecified hepatitis C
 N/A = Not applicable
 Calculations by Aboriginality are based on notifications of known Aboriginal status only (i.e. notifications of unknown Aboriginal status are excluded)
 Notifications from Christmas Island, Curtin, Leonora, Perth and Yongah Hill Immigration Detention Centres have been excluded

Table 48 Number and proportion of hepatitis C notifications by where infection was acquired, disease status and sex, WA, 2013

Where infection acquired	Disease stage	Sex				WA (Total)	
		Male		Female		Number	% Total
		Number	% Total	Number	% Total		
WA	Newly acquired	55	61.1%	15	46.9%	70	57.4%
	Unspecified	154	24.5%	80	22.6%	234	23.8%
	Total hepatitis C	209	29.1%	95	24.6%	304	27.5%
Interstate	Newly acquired	3	3.3%	0	0.0%	3	2.5%
	Unspecified	22	3.5%	10	2.8%	32	3.3%
	Total hepatitis C	25	3.5%	10	2.6%	35	3.2%
Overseas	Newly acquired	0	0.0%	0	0.0%	0	0.0%
	Unspecified	28	4.5%	17	4.8%	45	4.6%
	Total hepatitis C	28	3.9%	17	4.4%	45	4.1%
Unknown	Newly acquired	32	35.6%	17	53.1%	49	40.2%
	Unspecified	425	100.0%	247	69.8%	672	68.4%
	Total hepatitis C	457	63.6%	264	68.4%	721	65.2%
Total	Newly acquired	90	100.0%	32	100.0%	122	100.0%
	Unspecified	629	100.0%	354	100.0%	983	100.0%
	Total hepatitis C	719	100.0%	386	100.0%	1105	100.0%

Notes: Number = Number of notifications reported to the DoH
 % Total = Number of notifications (Where infection acquired and Disease status)/Total number of notifications (Sex) or overall
 Total hepatitis C = Newly acquired hepatitis C + Unspecified hepatitis C
 N/A = Not applicable
 Notifications from Christmas Island, Curtin, Leonora, Perth and Yongah Hill Immigration Detention Centres have been excluded

Table 49 Number and crude rate of newly acquired hepatitis C notifications by state and territory, Australia, 2013

Notifications	State/Territory								AUS (Total)
	ACT	NSW	NT	QLD	SA	TAS	VIC	WA	
Number	14	42	1	NN	61	18	136	122	394
Crude rate	3.7	0.6	0.4	NN	3.7	3.5	2.4	5.0	2.2

Notes: Number = Number of notifications reported to state and territory health authorities
 Crude rate = Crude rate per 100,000 population
 Data sourced from NNDSS, extracted 5 May 2014; data are provisional and subject to future revision. The follow-up and allocation of cases to newly acquired hepatitis C is highly dependent on public health follow-up which is variable between jurisdictions. Trends between newly acquired and unspecified hepatitis C cases within jurisdictions and over time therefore need to be interpreted cautiously.

Table 50 Number and crude rate of unspecified hepatitis C notifications by state and territory, Australia, 2013

Notifications	State/Territory								AUS (Total)
	ACT	NSW	NT	QLD	SA	TAS	VIC	WA	
Number	170	3,502	267	2,497	414	211	2,125	1,158	10,344
Crude rate	45.3	48.0	113.5	54.7	25.0	41.2	37.8	47.6	45.6

Notes: Number = Number of notifications reported to state and territory health authorities
 Crude rate = Crude rate per 100,000 population
 Data sourced from NNDSS, extracted 5 May 2014; data are provisional and subject to future revision. The follow-up and allocation of cases to newly acquired hepatitis C is highly dependent on public health follow-up which is variable between jurisdictions. Trends between newly acquired and unspecified hepatitis C cases within jurisdictions and over time therefore need to be interpreted cautiously.



This document can be made available in alternative formats on request for a person with a disability.

© Department of Health 2015

Copyright to this material is vested in the State of Western Australia unless otherwise indicated. Apart from any fair dealing for the purposes of private study, research, criticism or review, as permitted under the provisions of the *Copyright Act 1968*, no part may be reproduced or re-used for any purposes whatsoever without written permission of the State of Western Australia.